

NDI NEW MEXICO

2012-2013





STARLINE  PRINTING



**LANB is a proud sponsor
of NDI New Mexico.**



LANB

Creating a better way.

Los Alamos / Santa Fe: (505) 662-5171

Albuquerque: (505) 449-5100

Toll Free: (800) 684-5262

LANB.com



MEMBER FDIC



www.klingerllc.com



teaching children excellence

The Dance Barns
1140 Alto Street
Santa Fe, NM 87501
Phone (505) 983-7646
Fax (505) 983-7666

The Hiland
4800 Central Avenue SE
Albuquerque, NM 87108
Phone (505) 872-1800
Fax (505) 872-2669

www.ndi-nm.org

Photo Credits:
Kristin Macdonald,
Insightfoto.com,
Kate Russell Photography.

To purchase an
advertisement or
business listing, contact
NDI New Mexico at
(505) 983-7646 x 135.

Contents

10	Message from the Executive Director and Board Chair
11	Board of Directors & Emeritus Board
12	NDI New Mexico: Past, Present and Future
18	Honoring Estelle Yates
20	Evaluation & Impact
22	This Year at The Dance Barns & The Hiland
26	Powerful Partnerships
28	A Bright Future Ahead: The Campaign for Albuquerque
35	Statewide Celebration Graduates
44	NDI New Mexico Staff
46	Giving the Gift of Excellence
49	Silver Sneakers Society
58	Annual Fund Supporters
68	Gala & Special Event Sponsors
70	Volunteer Leadership
72	Corporate Partners
74	Special Friends
84	Business Listings
88	Advertisers Index



Program Books generously donated by
STARLINE PRINTING

Community Banking with a Big Picture focus

From jumbo loans for your dream home to estate planning for your peace of mind, we offer a full landscape of specialized services to help you achieve your financial goals.



Wealth Management* | Personal Banking | Business Banking | eBanking | Mortgage & Refinance | Commercial & Consumer Loans | Insurance*

Find out how a relationship with First National can help you with your big picture plans.

Call, stop by, or visit our website today.

All offices 992-2000 | www.fnb-sf.com

Santa Fe | Eldorado | Los Alamos | Albuquerque | Denver

*Investment and Insurance products are: not FDIC Insured, have No Bank Guarantee, and May Lose Value



Independent community banking since 1870

Member FDIC. Equal Housing Lender.  NMLS # 447019

PROUD SUPPORTERS

Rosemont realty is proud to support NDI New Mexico and the invaluable service it provides our many communities throughout the state. We strive for excellence in our business and appreciate what NDI NM and their programs do to accomplish this with our youth in New Mexico.

Daniel Burrell & Katherine Jetter Burrell



Adaptability | Innovation | Solutions

Headquartered in Santa Fe, Rosemont Realty is a fully integrated market leader in major commercial property acquisition and asset management, operating in over 28 states with a portfolio over 17 million square feet.

www.RosemontRealty.com



"Yeah we all shine on,
like the moon,
and the stars,
and the sun."

— John Lennon

Innovate+Educate is a proud supporter of NDI New Mexico. We thank the teachers and leadership of NDI New Mexico for helping New Mexico children shine!



505.467.8044 | www.innovate-educate.org

THANK YOU FOR SUPPORTING THE

Dorathi Bock Pierre

SCHOLARSHIP



Little is given to dreamers,
much is given to builders,
but most is given to dreamer-builders.



The Dorathi Bock Pierre Scholarship provides the opportunity for 31 students to participate in NDI New Mexico in-school programs annually and honors the memory of dancer and dance aficionado, Dorathi Bock Pierre.

Thank you to the 305 donors that have contributed to this scholarship fund in the NDI New Mexico endowment. If you would like to become number 306, please contact Aline Harris-Ellis at (505) 983-7646 x 121. Join John C. Herklotz in being a dreamer-builder.

Building our future

United Rentals is proud to support NDI New Mexico



Consider it done.™

Rentals • Sales • Service • Supplies

800-UR-RENTS
unitedrentals.com

WELLS
FARGO

Building the future, one mind at a time



Learning starts with curiosity, is fed by discoveries and continues for a lifetime. Education lays the foundation for the future of our children and communities.

NDI New Mexico, you've helped our children take this journey.

Proudly serving the state of New Mexico with 95 locations

wellsfargo.com

© 2013 Wells Fargo Bank, N.A. All rights reserved. Member FDIC. (853892_07866)

TEACHING CHILDREN EXCELLENCE

Together we'll go far



FRIENDS AND FAMILY



Welcome to NDI New Mexico! Today's performance is indeed a celebration, the result of a commitment to excellence and our Core Four values: Work Hard, Do Your Best, Never Give Up, and Be Healthy. On stage you will see each child's discipline, tenacity, and joyful effort. Their path to this performance lays the foundation for improved health, self confidence, and academic success.

More New Mexicans than ever before are involved with NDI New Mexico. In 2012, we served 7,250 children, 600 teachers, and 67,000 audience members around the state!

We wish to recognize all the people who have helped make the past 10 years at The Dance Barns spectacular. Thousands of children, families, and audience members have walked through our doors to be inspired by excellence. Our teachers and choreographers have created performances and classroom experiences that will serve as memories for a lifetime. Each child has benefited from the joy of learning and the unique power the arts have to inspire. The Dance Barns have truly become a vibrant center for culture and community.

We are excited to announce the final phase of fund raising and renovation at The Hiland. We deeply value the support of the many donors, public officials, families, and friends who worked so hard to make this possible. This past year, we successfully met the Sydney & Andrew Davis Foundation challenge to attract 1,000 new donors. We also received a prestigious grant from The Kresge Foundation to complete the final phase of renovation. With less than \$1 million left to raise, we invite you to join us so that we can reach this milestone for NDI New Mexico and for the Albuquerque community.

We send our heartfelt gratitude to all the donors who have declared their belief and encouragement for our mission and programs, with special thanks to those who have joined the Silver Sneakers Society, our legacy giving program. Your commitment has been instrumental to foster much needed youth development. We would also like to thank the NDI New Mexico instructors and staff as well as the students and families who show your dedication to excellence and to being healthy every day.

We hope you are inspired by the infectious smiles, energy, and possibilities you see on stage today. Together we are helping prepare children for a positive future.

Yours in Teaching Children Excellence,

Russell Baker
Executive Director

Gerald Landgraf
NDI New Mexico Board Chair

BOARD OF DIRECTORS



★ Gerald Landgraf
Chair

★ Beth Moise
Vice-Chair

★ Charles W. N. Thompson, Jr.
Treasurer

★ Leslie Nathanson Juris
Secretary

★ Catherine Oppenheimer
Past Chair

★ Nancy Blaugrund

★ Julia B. Bowdich

★ Louise Campbell-Tolber

★ Jacques d'Amboise

★ Cynthia Delgado

★ Michael C. Daly

★ Valerie T. Diker
Founding Chair

★ Diane Doniger

★ James E. Goodwin, Jr.

★ Medora Jennings

★ Linda DiPaolo Love

★ Mayo Miller

★ Barbara Moore

★ Windle Priem

★ Luci Tapahonso

★ Carrie Terrell

★ Garrett Thornburg

★ Paul N. Weaver III

★ Robert P. Worcester

EMERITUS BOARD

★ Dianne Chalmers

★ David Chase

★ William Cowles

★ Michael D'Alfonso

★ Susan Dubin

★ Patricia Friedman

★ Cindy Johns

★ Jean Knapp

★ Edward Lujan

★ Amb. Frank Ortiz (in memoriam)

★ Joseph L. Ponce

★ Frauke Roth



NDI NEW MEXICO PAST, PRESENT & FUTURE

PAST Back in 1994, founding artistic director Catherine Oppenheimer planted the seeds that ultimately blossomed into an organization that has reached approximately 75,000 students, most of whom experienced their NDI New Mexico class in a public elementary school. Could she have known that the combination of joy and an

uncompromising standard of excellence would inspire so many children? Catherine said recently, “Looking back, the power of the program and what happens in the classroom was there from the beginning. I think the kinesthetic experience of quality arts education is so powerful for children, and for some children it’s the key that opens up learning in their lives.”

In 2003 we celebrated the grand opening of The Dance Barns in Santa Fe, which made it possible for all children ages three to eighteen to gain access to high quality afterschool, weekend, and summer programs. Additionally, those students who showed the greatest interest and affinity for dance could now participate in advanced training programs that provide pre-professional instruction and performance opportunities. Since that time, other highlights have included three facility expansions to increase studio space, establishing the Merrill Brockway Performing Arts Library, collaborating

continued

“ Looking back, the power of the program and what happens in the classroom was there from the beginning. ”



THEN
& NOW
Jordan Craig

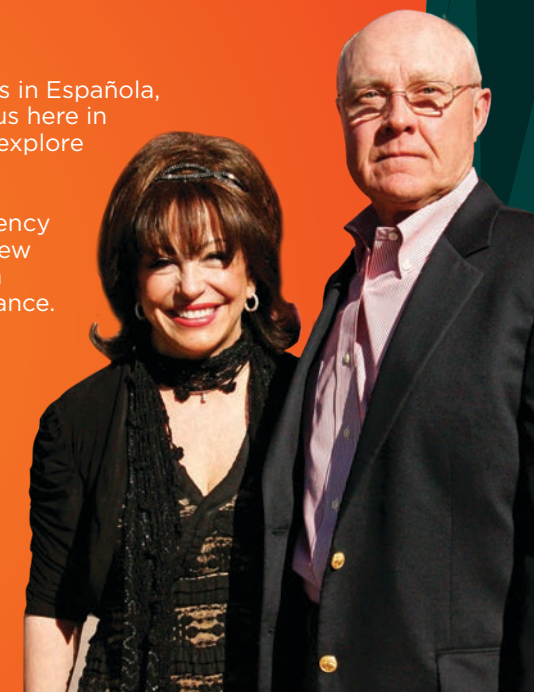
SPOTLIGHT ON PAULA & STEVE FASKEN

For the past two years, the Fasken Foundation has supported “dancing the high road to Taos”, NDI New Mexico’s North and Residency programs in Española, Velarde, Dixon, and at Enos Garcia Elementary School in Taos. “Our focus here in New Mexico is to do something to provide opportunities for children to explore the arts.”

In 2012-13, with the Fasken’s increased generous support, the Taos residency was expanded to two weeks, and now includes costumes and the NDI New Mexico band. The entire third grade, a class of tiny tots, the Enos Garcia teachers, and even the school principal participated in the final performance.

Paula and Steve find NDI New Mexico to be a perfect fit for their philanthropic goals. Paula has a lifelong love of dance and Steve is dedicated to providing educational opportunities for youth. Together, they see that NDI New Mexico encompasses their goals of building community collaboration and supporting young people.

NDI New Mexico’s statewide programs are made possible because of commitment from big hearted donors like Paula and Steve. We are grateful for their dedication to helping NDI New Mexico expand to more schools, more children, and the results... more smiles! ■



1994-1995

100 children taught in Santa Fe. Catherine Oppenheimer incorporates NDI New Mexico as a 501(c)(3).



2003-2004

The Dance Barns opens in Santa Fe!



2005-2006

Ann Reinking, Pat Birch Master Classes.



2006-2007

The Wallis Annenberg Santa Fe Summer Institute named. Merrill Brockway Performing Arts Library opens.



2007-2008

6,000 children taught in 30 communities. 1st Annual Dance-A-Thon at Washington Middle School in Albuquerque.



2009-2010

Campaign for Albuquerque begins.



2011-2012

6,800 children taught in 39 communities. The Hiland Theater opens!



2013-2014

20th Anniversary of NDI New Mexico.



with Santa Fe ProMusica on the Peter and the Wolf, and hosting guest choreographers such as Shirley MacLaine, Anne Reinking, Tommy Tune, Pat Birch, and Jacques, Charlotte, and Christopher d'Amboise.

NDI New Mexico's commitment to the Albuquerque Hiland renovation project began nearly seven years ago when our board, staff, and community stakeholders identified the need and opportunity to expand into New Mexico's largest city. Establishing the Albuquerque Managing Council, and diversifying our board to include local leaders, set the stage for a comprehensive community marketing campaign and the subsequent growth of our donor base. Last year's grand opening Gala performance at The Hiland Theater brought out Albuquerque's brightest leadership and most committed community supporters in celebration of our first year in the newly renovated facility.

PRESENT

The Hiland grand opening set the stage for us to launch new after-school and summer programs, partner with the city of Albuquerque on our HIP to Be Fit® club, and host the widely-popular Dance-A-Thon. Although we are conducting classes and serving over 2,000 students in Albuquerque with programs that positively impact their health, improve their self-esteem, and raise their quality of life, The Hiland facility is not yet complete. With the ongoing support of a generous and committed community of stakeholders, we are completing Phase III this year, and thereby meeting the terms of a prestigious \$1 million Kresge grant. This is allowing NDI New Mexico to significantly expand our services in Albuquerque and throughout southern New Mexico.

Even while we are expanding our reach in Albuquerque, we remain steadfastly committed to the quality of our statewide programs. To ensure NDI-NM delivers the highest quality teaching techniques and methodologies, we are continuously training new teachers and providing artistic enrichment opportunities for staff. Additionally, we are engaging alumni through our annual gatherings, social media postings, and through both internal and external career opportunities.

We're also currently studying the long-term impact of our programming by conducting a longitudinal evaluation in partnership with UNM's Center for Education Policy Research. This comprehensive assessment will allow us to demonstrate the impact of NDI New Mexico's Core Four (Work Hard, Do Your Best, Never Give Up, and Be Healthy) on

student performance both in and beyond the program, thereby guiding the design and delivery of programs, attracting increased support from foundations and private supporters, and reaching many of the 100 schools on our waiting list.

FUTURE

With our 20th anniversary in 2014 on the horizon, plans are underway to accelerate the growth of NDI New Mexico into one of the largest and most significant statewide youth development programs in the nation. Bringing exceptional educators and professional artists into the state of New Mexico, and training them with NDI-NM's unique pedagogy, will build upon our legacy of accomplishing meaningful social change through joy, hard work, and inspiration. We will create a robust after-

continued



THEN
& NOW

Zacciah Hanson

THEN
& NOW

Laura Garrett





Teaching Excellence® Teacher Training Workshop August 2013

This workshop, conducted at The Dance Barns in Santa Fe, provides an introduction to NDI New Mexico's award-winning teaching methodology.

For more information, call
(505) 983-7646 x126 or visit
www.applyndinewmexico.com.

school program at The Hiland, deepen our relationship with New Mexico's youth by adding a second Residency Team to expand our rural programs in southern New Mexico, and double our instructional hours at 15-week schools by transitioning them into 30-week programs.

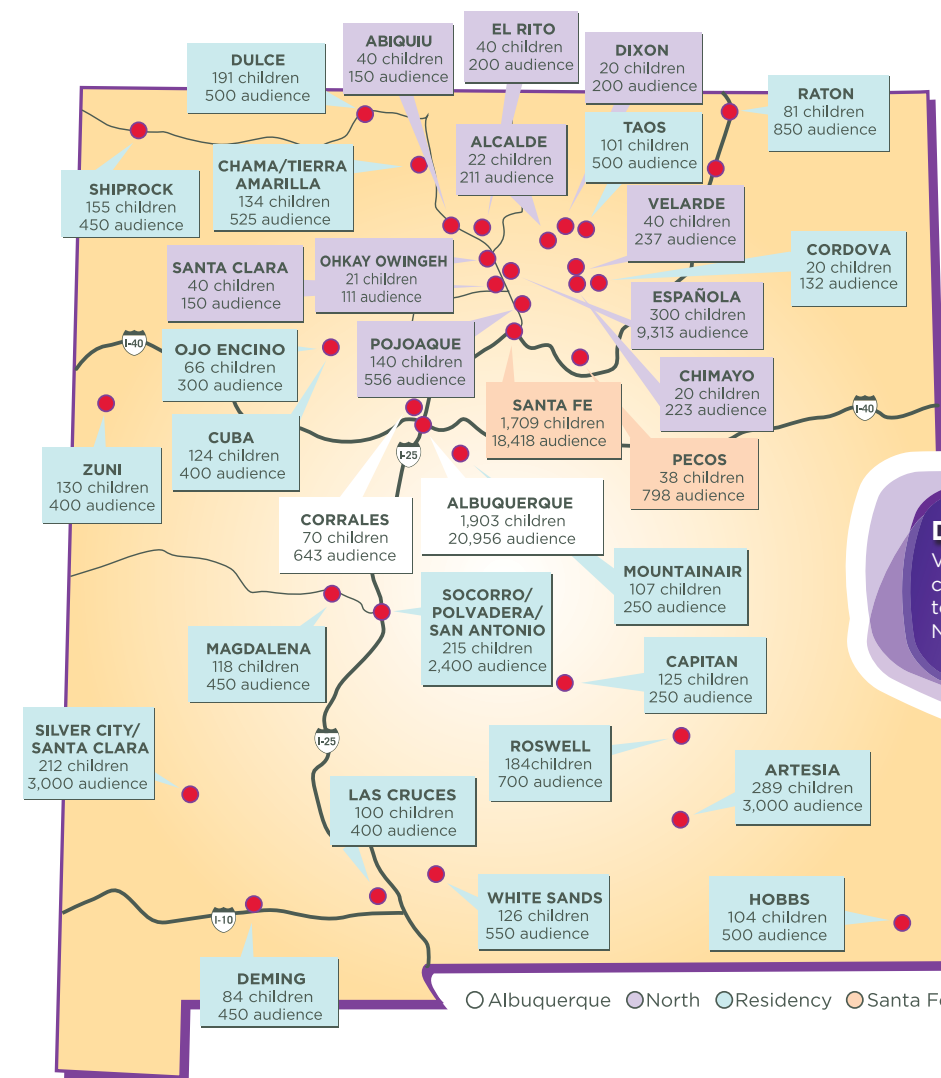
By FY2015-16, NDI New Mexico expects to reach a total of 8,720 children statewide, an increase of 17% over the 7,250 children served today. Before long, we expect to reach the impressive benchmark of 10,000 children served annually! This will be accomplished in-part through the generosity of planned

giving donors who make their crowning commitment to NDI New Mexico by joining our exclusive *Silver Sneakers Society*.

We recognize that changing the picture of outcomes for New Mexico's children is a long-term enterprise – and we are committed to making it happen. Every child deserves the opportunity to experience success both in school and on the stage of life. Join us in this exciting work and be there to witness the joy on the faces of the children whose lives are being changed!

“The **philosophy** of NDI New Mexico is one of **excellence through** a positive and **encouraging** approach. I witnessed my students' **self esteem** and confidence **improve** tremendously as a **result** of the program.”

NDI NEW MEXICO



Discover More!
Visit YouTube (www.youtube.com/user/NDINewMexico) to see the latest videos from NDI New Mexico!



In 2012, NDI New Mexico served 7,250 children, 600 teachers, and 67,000 audience members around the state!

SPOTLIGHT ON Tom Porras

“The best moment comes when all 500 dancers fill the stage and I see those smiling faces filled with excitement.” Tom Porras is NDI New Mexico's Albuquerque Advanced Training Director. He works with close to 200 dancers on the Super Wonderful Advanced Team (SWAT) and Celebration Team each week. He also works alongside Albuquerque Artistic Director, Jackie Oliver, organizing the End-of-Year Event, the Dance-a-Thon, and Summer Institute. This is in addition to teaching at Dolores Gonzales, Los Padillas, and La Mesa Elementary schools.

To accomplish all that he does for NDI New Mexico, Tom's no stranger to our Core Four: Work Hard, Do Your Best, Never Give Up, and Be Healthy. He trained with the Broadway Dance Center, the Marsh School of Classical Ballet, and Cirque du Soleil Choreographer Debra Brown's dance company “Apogee”, where he studied alongside trampolinists, acrobats, and contortionists.

“It's so gratifying to see the hard work from the NDI New Mexico staff, instructors, school teachers, and volunteers, as they come together to create a successful and inspiring memory for the children that will be embedded in their hearts for the rest of their lives.” ■



HONORING ESTELLE YATES



The
Artesia Public Schools
thanks NDI New Mexico for their
partnership in making the arts
an important part of our students'
public school experience.

Estelle Hefler Yates, age ninety-four, met her husband, St. Clair Peyton "S.P." Yates, in Massachusetts in the late 1930s when he was a graduate student at the Massachusetts Institute of Technology. Estelle married S.P. in 1940 and moved to S.P.'s hometown of Artesia, NM, where he joined the oil business founded by his father, Martin Yates. In 1959, S.P. founded Yates Drilling company, and alongside his brothers, founded Yates Petroleum Corporation.

Estelle and S.P. Yates, have been active and generous supporters of many local organizations, especially those serving young people. Estelle has served on the national board of the Girl Scouts and has been extremely supportive of the arts in the Artesia schools. As the Yates family companies grew and their operations expanded into other communities, Estelle encouraged S.P. to provide charitable support to those areas as well. In 1955, they established the S.P. and Estelle Yates Family Foundation to support the arts and human services. The foundation has been a strong supporter, in particular, of the Artesia Arts Council, NDI New Mexico, and Assurance Home in Roswell.

For the past eight years, the S.P. and Estelle Yates Family Foundation has supported NDI New Mexico's programs in schools and communities in Southeast New Mexico. NDI New Mexico's two-week Artesia Residency serves all the 4th grade students at all of the elementary schools in the district. At the end of the residency, the students perform for the entire community.

Following S.P.'s passing in 2008, Estelle has continued the couple's tradition of philanthropy with generous gifts to the New Mexico School for the Arts, the University of New Mexico, and the University of Texas at Austin, which was her husband's alma mater. Estelle established her own foundation, the Estelle H. Yates Foundation, in 2009 to focus her philanthropic giving on education, arts, and health services. The foundation provides enhanced funding for the mathematics and science departments of the Artesia public schools and significant funding for the new Artesia public library.

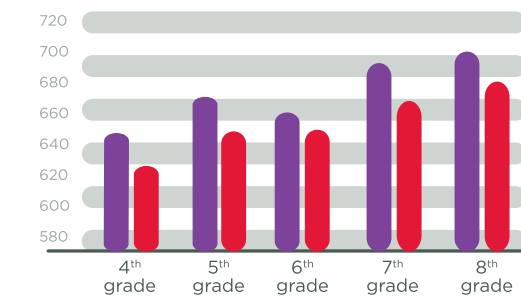
Estelle is also a devoted mother, grandmother, and great-grandmother whose children, and now grandchildren, are following in her philanthropic footsteps.



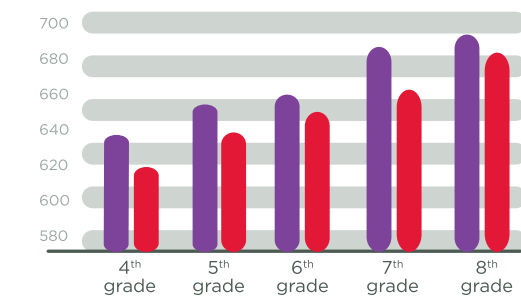


Evaluation & IMPACT

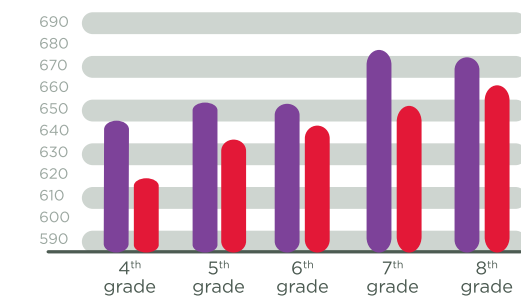
Reading Scores



Mathematic Scores



Science Scores



NDI New Mexico collected New Mexico Standards-Based Assessment (NMSBA) test score between 2006 and 2010 for 396 public school students who participated in NDI New Mexico Advanced Training programs during those school years. **NDI New Mexico students scored consistently higher than their peers, ranging from 10 to 27 points higher.**

School teachers and principals indicate that NDI New Mexico programs are connected to the classroom curriculum.

Students report that NDI New Mexico:

- makes them feel happy
- keeps them healthy
- gives them more energy
- inspires them to move more
- allows them to make new friends
- helps them become more confident
- encourages them to try new things
- helps them continue with tasks that are hard to do
- helps them learn new vocabulary and/or math skills
- supports and encourages them
- concepts of “Never give up” and “Do your best” help boost their self-confidence and sense of accomplishment
- allows them to perform to the best of their abilities in an atmosphere of acceptance

Teachers, principals, and parents report that NDI New Mexico:

- has a higher expectation for children and more of a sense of focus and goal orientation
- helps students establish their identities
- helps students develop positive behaviors and form positive relationships with adults
- brings out positive energy in their children and helps them develop teamwork skills
- helps students learn vocabulary words and math concepts through movement

ACADEMY FOR THE LOVE OF LEARNING

TRANSFORMING LIVES & REVITALIZING CULTURE ■ PROGRAMS FOR MEANINGFUL CHANGE

In these fractured times, when our very humanity seems under continual assault, there is a place where people come together to remember and explore what it means to be fully human, a place that fosters a deep engagement with learning, and an opening to wonder. This place is the Academy for the Love of Learning.

Thirty years ago, Aaron Stern, with his mentor, the late Leonard Bernstein, dreamt of revitalizing our culture and finding an answer to Bernstein’s question: “Don’t we *never* learn?!”

Yes, we *do* learn. We *do* transform. And, we must get much better at it. The Academy for the Love of Learning is activating this transformation in individuals, organizations and communities through programs such as *Teacher Renewal*, *El Otro Lado*, *Lifesongs*, and *Leading by Being*®—the Academy’s foundation course in personal leadership.

Find out more about what lives behind a *love of learning*™, Join us for a Free Evening of Exploration at our Santa Fe Campus.

505.995.1860 ■ www.aloveoflearning.org

“This will be our reply to violence: to make music more intensely, more beautifully, more devotedly than ever before.”

■ Leonard Bernstein

We are here when our youngest patients need us most

Lovelace Westside Hospital is proud to have the Westside’s only Inpatient Pediatric Unit. Our unit offers a broad range of child-centered services for the medical, surgical and chronic illness management our patients need. This unit is designed with families in mind to treat patients from infancy through adolescence. Our pediatricians are committed to offering the highest quality of pediatric medical care while also providing continuity of care through communication with patients’ pediatricians, nurses and families.

Inpatient pediatrics – just another way we care for our neighbors on the Westside and in Rio Rancho.

Lovelace
Westside Hospital
lovelace.com



DANCE BARN HILAND

On any given day, you will find The Dance Barns and The Hiland to be hubs of activity -tiny tots tip-toe up to greet their teachers, teenagers stretch in the studios between classes, and family members chat in the lobby as music fills the halls. Both facilities have become places of spirit and vitality focused on student inspiration and achievement.



..... **This year we are celebrating our tenth anniversary at The Dance Barns** with new carpet, fresh paint, and Core Four messaging: Work Hard, Do Your Best, Never Give Up, and Be Healthy in the studios. We will also complete the third and final phase of renovations at The Hiland to add new program space and expand our exceptional roster of teaching artists and staff.

The Dance Barns and Hiland offer robust programs of dance, music and healthy lifestyles classes with something for everyone. Classes include all levels of ballet, tap, jazz,

voice, and acting as well as the HIP to Be Fit® Club which combines dance, hands on nutrition education and homework assistance.

Classes are open to everyone in the community and take place afterschool, on the weekends and in the summer. The most serious students can sign up for a rigorous course of study and perform with one of our pre-professional teams: Company XCel and the Apprentice Company. Some of our alumni are now dancing in college programs, with professional ballet companies and in Broadway touring productions.

Our annual performances - the Winter Dance Escape, End of Year Tiny Tot and Upper-level Showcases, Vocal

continued

“ **NDI New Mexico** has **raised** the bar **again!** ”



SPOTLIGHT ON FIRE CHIEF DAVID SANDOVAL

Chief Sandoval has participated in seven NDI New Mexico events as part of the Firefighter/Police Officer dance. He says it is one of the most enjoyable and rewarding community events he is involved with as a firefighter for the City of Santa Fe.

David (what he goes by at The Dance Barns) regards NDI New Mexico as one of the gems of our state as he feels it provides a safe, nurturing and creative environment for children. His daughter Kelly has been involved with NDI New Mexico since she was 5 years old, taking classes and performing as a Tiny Tot in Route 66: Legends of the Road. Now, as a 15 year old, Kelly is a member of Company XCel and aspires to a career in musical theatre.

David and his wife believe NDI New Mexico has had a profoundly positive influence on Kelly. NDI New Mexico's staff has not only taught her first position, time steps and vocal projection, but also discipline, determination and responsibility. They believe Kelly's NDI New Mexico experience has made her a better student and will serve her well throughout her life, no matter what she decides to do.

Chief Sandoval has a message for all NDI New Mexico dancers: "No matter what you decide to do in life, never stop learning and improving!" ■



Concert and Tap Jam - are entertaining and provide students the opportunity to demonstrate their technical growth and expand their performance experience.

The arts have a unique power to engage and motivate children.

Through NDI New Mexico's programs at The Dance Barns and The Hiland, children are supported in

developing the characteristics and attitudes to overcome hurdles to success. More than just buildings, The Dance Barns and The Hiland provide important spaces for the work we do in building deeper relationships with families, providing constructive and safe places for children to spend their time, and delivering inspirational programs.

You can find out more about the afterschool, weekend and summer programs at The Dance Barns or The Hiland by visiting our website or stop by to take a tour and sign up for a class!

**VISIT OUR WEBSITE
FOR CLASS SCHEDULES
& INFORMATION.**

Santa Fe - www.dancebarns.com
Albuquerque - www.hilandtheater.com

Comcast proudly supports **NDI New Mexico**
to power dreams in our communities.



Digital literacy is key to unlocking opportunity. It affords unlimited potential in a world where information technologies touch nearly every aspect of our lives. That's why Comcast is committed to bringing the power of the Internet to more low-income families across New Mexico. Our Internet Essentials program offers affordable home Internet service, a low-cost computer, and free digital literacy training.

Learn more: www.InternetEssentials.com

TEACHING CHILDREN EXCELLENCE  **COMCAST**

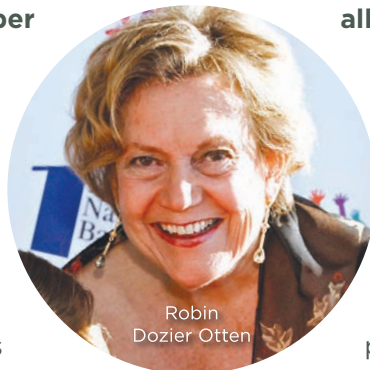
Powerful PARTNERSHIPS

NDI New Mexico is pleased to have many partners that help strengthen our programs and communities throughout the state. In addition to our partnerships with local schools and school districts, there are many people and businesses that make it possible for us to bring our staff to cities and towns all over New Mexico.



Governor
Susana Martinez

Freeport-MacMoRan Copper and Gold supports our Silver City Residency. Our good friends at NM Tech's Performing Arts Series make sure our Socorro and Magdalena Residencies run smoothly year after year. The Fasken Foundation has made it possible for us

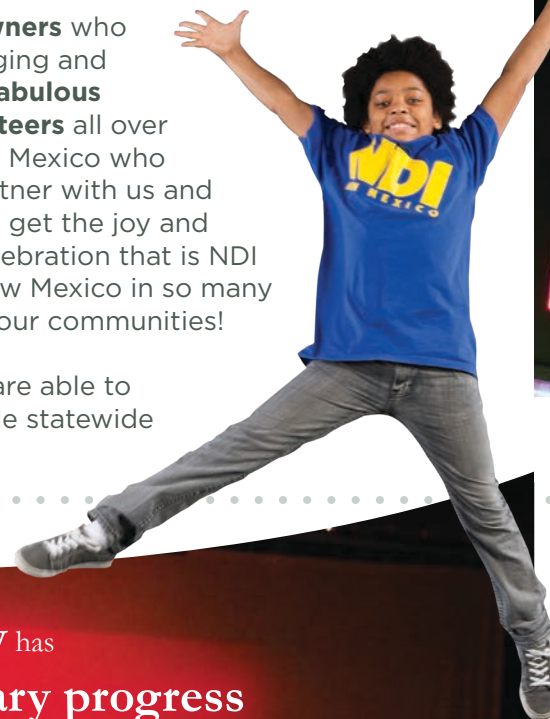


Robin
Dozier Otten

to expand our Taos Residency to two-weeks. The Jicarilla Apache Nation ensures that every student at Dulce Elementary School participates in NDI New Mexico for four years. The great folks at the Raton Arts and Humanities Council have made it possible for the 5th graders at Kearny Elementary to dance for more than 10 years.

Add in hotel owners who donate lodging and all the fabulous volunteers all over New Mexico who partner with us and we get the joy and celebration that is NDI New Mexico in so many of our communities!

We are able to provide statewide



“We know that the public's money has been well spent when we see the extraordinary progress NDI New Mexico students are making in their school work, but equally convincing are the huge smiles on the children's faces as they perform in NDI New Mexico's spectacular programs.”

- Robin Dozier Otten, Director of Family and Community Services



Albuquerque Film & Media Experience at The Hiland!

Mark your calendars for June 3-9, 2013 when the Albuquerque Film & Media Experience (AFME) will debut in Nob Hill and at The Hiland! A weeklong film festival, AFME is honored to have the involvement of Hollywood icon Robert Redford and renowned artist Sibylle Szaggars-Redford and will feature movies and events along Route 66.

On June 7, The Hiland welcomes “A special evening with Robert Redford and Special Guests.”

On June 8, there will be a special performance at The Hiland benefiting NDI New Mexico with Renown Artist Sibylle Szaggars-Redford, Icelandic Pianist David Thor Jonsson and featuring Robert Redford and NDI New Mexico Founding Artistic Director Catherine Oppenheimer. An exclusive twenty couple VIP fundraising dinner will follow the event.

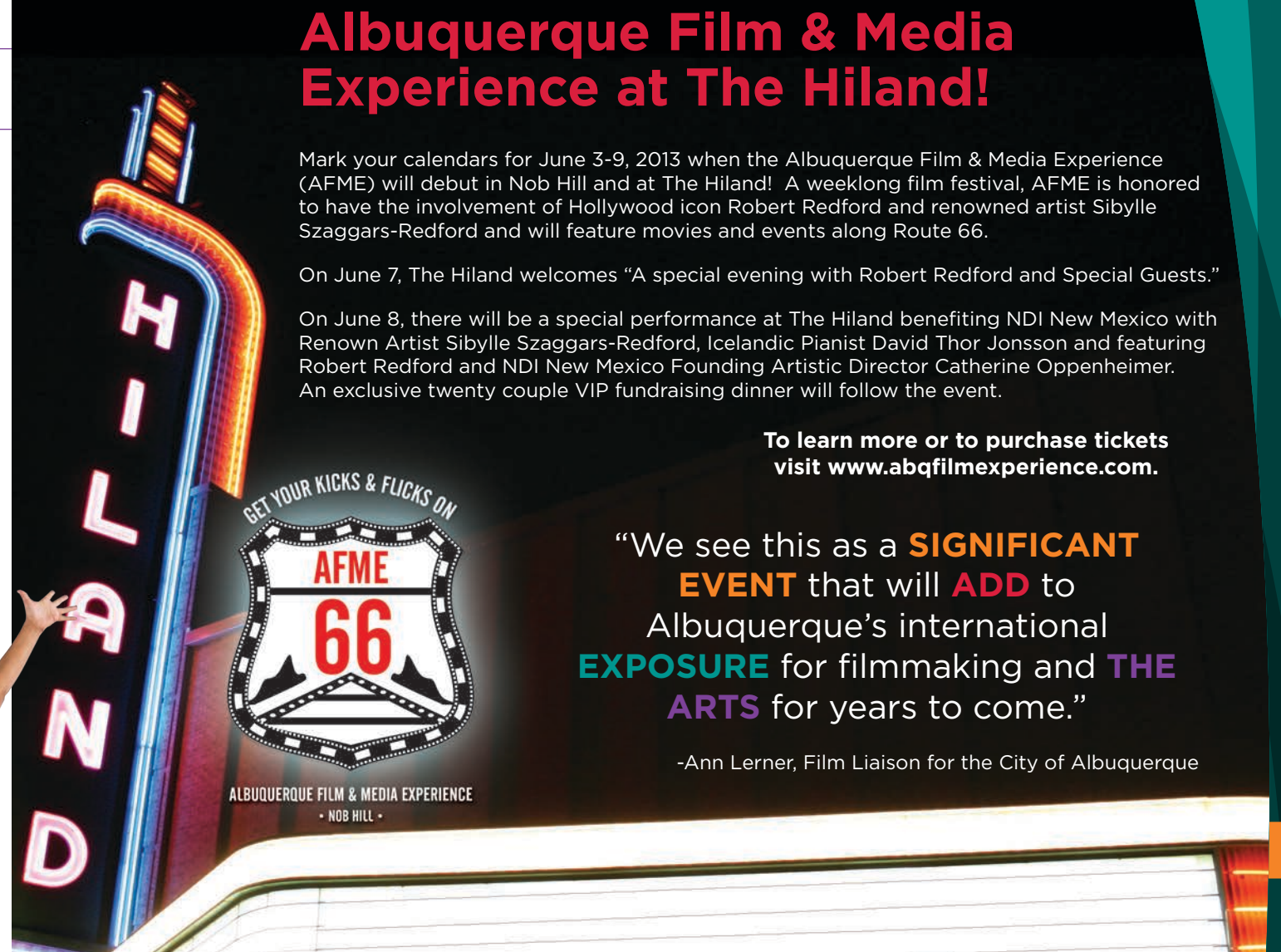
To learn more or to purchase tickets visit www.abqfilmexperience.com.



ALBUQUERQUE FILM & MEDIA EXPERIENCE
- NOB HILL -

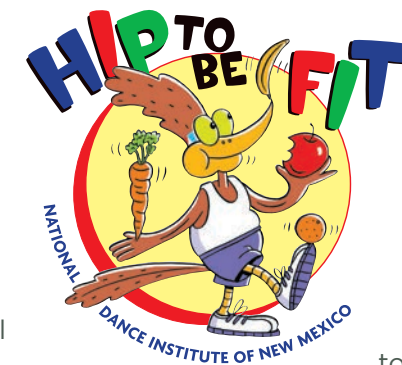
“We see this as a **SIGNIFICANT EVENT** that will **ADD** to Albuquerque's international **EXPOSURE** for filmmaking and **THE ARTS** for years to come.”

-Ann Lerner, Film Liaison for the City of Albuquerque



programs thanks in part to the **State of New Mexico** and the Department of Health. Committed to improving the well being of children and families across New Mexico, the **Department of Health** supports our SNACK (Student Nutrition Activity Curriculum Kit) and Train the Trainer programs for public school teachers in addition to the NDI New Mexico classes at many schools. The State Legislature has been instrumental in supporting the public-private partnership which has resulted in

renovations at both The Hiland and The Dance Barns.



The Family and Community Services Department of the City of Albuquerque is helping us reach more than 200 students enrolled in after-school programs at 16 city community centers. The students are bused to The Hiland twice each week for NDI New Mexico's HIP to Be Fit® Club. Students are having fun learning dance and good nutrition while improving their academic achievement with the help of **Kids Cook!** and **Golden Apple Scholars**.

A Bright Future Ahead

Campaign for Albuquerque

In September, we celebrated one year of serving students at The Hiland. We now have more than 50 class offerings each week ranging from Zumba and Boy's Ballet Boot Camp to Early Steps and Intro to Musical Theater. Each afternoon, the giggles of toddlers blend with conversations between parents and the laughter

of teen students as they prep for their afternoon classes. Dreams and visions are becoming a reality at The Hiland, and it's because of the dedication of thousands of community members, donors, volunteers, and visionaries. As you tour our new Albuquerque home, stars under the marquee, colorful hearts at the children's entrance, and placards throughout the building all pay tribute to the generosity of donors to our Hiland renovation.

More than 600 children use The Hiland on a weekly basis, and soon we will have the capacity to double that number once the final phase of construction is completed this summer. Thanks to a \$1 million challenge grant from The Kresge Foundation, we have the opportunity to finish The Hiland this year. To satisfy the conditions of the grant, we must reach our \$13 million goal and complete construction by August 31, 2013. With just over \$850,000 left to go, it's the perfect time to support The Hiland.

Once construction is done on Phase 3, we will have more educational space for students, including two additional studios, a vocal room, and permanent office space for instructors and staff. With a gift to the Campaign for Albuquerque, you support the renovation of this Albuquerque treasure, help us meet The Kresge Foundation challenge, and receive permanent recognition at The Hiland.



\$25,000
\$10,000
\$5,000
\$1,000
\$500

Large Hiland Star under the front marquee
Hiland Star on the front walk
Hiland Heart on the children's lobby wall
Theater seat (balcony)
Theater seat (retractable)

A growing program like NDI New Mexico at The Hiland requires increasing levels of programmatic support. All our programs are offered free or on a sliding scale; which would simply not be

continued

\$13 million
Phase I, II, III

\$9.5 million
Phase I, II

\$5.5 million
Phase I

\$12,136,742
Raised as of
April 2013



possible without donations, grants, and sponsorships from people like you. In addition to supporting The Hiland renovation, there are five key ways you can help us offer much-needed programs and make a difference in the lives of 2,000 Albuquerque children and their families:

- * Include NDI New Mexico in your **UNITED WAY GIVING**. Monthly gifts make a huge difference in the level of services we can offer Albuquerque families.
- * **SPONSOR A STUDENT** for the school year. It's a great way to connect with the mission of NDI New Mexico. (\$1,000 annually or \$83.33/month)
- * Assemble a group of friends from a club or membership group and jointly **SPONSOR A CLASS** at The Hiland or in one of our schools. There's no better way to follow the progress of our students! (\$6,000 per class)
- * **SPREAD THE WORD** about Hiland after-school classes. We enroll children ages 3-18, as well as adults. Classes run throughout the school year and summer.
- * **JOIN OUR MAILING LIST!** It's a great way to learn more about events and performances hosted at The Hiland, read our latest news, and discover ways you can plug into the important work of NDI New Mexico.

To contact the Albuquerque Development Department about any of these opportunities, call (505) 340-0204 or visit us online at www.ndi-nm.org.



HILAND LEADERSHIP DONORS

Pam & David Albin
Anonymous (2)
The Benjamin Spencer Fund
Bernalillo County
City of Albuquerque
Dianne & Don Chalmers
Dr. George A. Cowan*
Valerie T. & Charles Diker
Frank D. Gorham, Jr. & Marie Kelly
Gorham Charitable Foundation
Goodman Realty Group
Fred & Jane Hampton
Klinger Constructors, LLC
The Kresge Foundation
The JE and LE Mabee Foundation
Catherine Oppenheimer
Deborah Peacock, Nate Korn & Peacock Myers, P.C.
Jack* & Donna Rust
State of New Mexico
Summit Electric Supply
Sydney & Andrew Davis Foundation
Thornburg Charitable Foundation
Thornburg Investment Management
John L. Tishman
U.S. Department of Commerce Economic Development Administration
U.S. Department of Housing and Urban Development, CDBG
William Randolph Hearst Foundation
S.P. & Estelle Yates Family Foundation

HILAND LARGE STAR DONORS

Linda & Carl Alongi
Bank of Albuquerque
Cliff & Nancy Blaugrund
Julia B. Bowdich
Turner & Margaret Branch
Century Sign Builders
Dianne & Don Chalmers
Valerie T. & Charles Diker
Ronald & Susan Dubin
Mel & Mary Ann Eaves
David Foster & Holly Barnet-Sanchez
French Funerals-Cremations
Jim & Carol Hinton
Medora & Jim Jennings
Johns Family Foundation
Ike* & Suzanne Kalangis
Klinger Constructors, LLC
Jerry & Barbara Landgraf
Edward & Virginia Lujan
Beth & Steve Moise
Suzanne Trager Ortega
Antoinette Peloso & Chad O'Connor
PNM Resources Foundation
Anne & Joseph L. Ponce
Frauke & Keith Roth
Ted & Vada Stanley
Summit Electric Supply
John L. Tishman
Louise Campbell-Tolber & Steven Tolber
Eileen Wells
Wells Fargo

HILAND STAR DONORS

Bank of Albuquerque
Elaine & Wayne Chew
Eye Associates of New Mexico
Jerry & Sharon Geist
Gene & Ande Kok
Howard & Judy Mock
Alicia Feil Peterson & JC Peterson
Ed & Nancy Pierce
REDW
The Rotary Club of Albuquerque del Sol
David & Debbie Seely
Carrie & Brian Terrell
Gretchen & Shane Williams

HILAND HEART DONORS

Bank of Albuquerque
Banner Foundation
Diane & Peter Doniger
Phil & Krys Custer
Mollie & Robert Duff Custer
Art & Sonya Gardenswartz
Jerry & Sharon Geist
Helen Grevey & Jay Hertz
Paul & LaDonna Hopkins
Jim & Rebecca Long
Sheila & Ole Peloso
PNM
The Rotary Club of Albuquerque del Sol
Bill & Patty Snead
Ted & Vada Stanley
Alicia & Peter Touche
Sunny Tyrrell
Paul & Susann Weaver

SPOTLIGHT ON KLINGER CONSTRUCTORS LLC

The team at Klinger Constructors has a unique distinction at NDI New Mexico; they put the roof over our heads...literally. Klinger served as the general contractor for both the construction of The Dance Barns and the renovation of The Hiland. Through that process, they have helped bring some of NDI New Mexico's biggest dreams to life.



Over the last ten years, members of Klinger's leadership and staff have supported the work of NDI New Mexico by serving on fundraising and building committees and supporting the students through attendance at events and performances. And their involvement doesn't stop there.

Since 2008, Klinger Constructors has sponsored the NDI New Mexico program at Mission Avenue Elementary in Albuquerque. "You really get hooked on the mission of NDI New Mexico by attending a class and seeing the excitement of the kids. The annual Gala then gives you the total impact that is being made in the whole community by showing all the schools that are involved. Klinger is honored to have the opportunity to support the Arts for kids while also teaching them about healthy, active lifestyles. Great job NDI New Mexico!"

Klinger Constructors and its employees have become an integral part of the NDI New Mexico family. We applaud Ray Smith, Tom Novak, and the entire Klinger team for 30 years of service in New Mexico, and we thank them for their strong example of giving back to the community. ■

THANK YOU SPECIAL FRIENDS

- * Members of the New Mexico legislature for their generous support of The Hiland
- * Bernalillo County Commission Chair Maggie Hart-Stebbins and Commissioners De La Cruz, Johnson, O'Malley, and Talbert
- * Members of the Bernalillo County staff, particularly the County Manager's office, CIP office, and Economic Development office for their efforts to finish The Hiland
- * The Kresge Foundation for their generous funding of Phase Three which will help us complete The Hiland and reach thousands more families in Central and Southern New Mexico
- * Albuquerque City Councilor Rey Garduno for his support of The Hiland and District 6, and Albuquerque City Councilors Benton, Cook, Harris, Jones, Lewis, Meyers, Sanchez, and Winter for their unanimous support of The Hiland project
- * Members of the City of Albuquerque staff, particularly the Family and Community Services Department, and Frank Padilla from the HUD office, for their assistance on the HUD/CDBG grant
- * Diane and Greg Ogawa, The Greater Albuquerque Chamber of Commerce and Albuquerque the Magazine for hosting campaign events
- * All of our "Helping Hands" donors for helping us reach the Sydney & Andrew Davis Foundation challenge
- * Klinger Constructors LLC, Studio Southwest Architects Inc., and Chaparral Electric for their excellent work on The Hiland renovation



HILAND THEATER SEAT DONORS

Anonymous
Kenneth & Cris Abbott
Ann Aceves
Doug & Debbie Allen
Scott & Julie Allen
Joan Allen
Joseph & Sara Badal
Roy & Tana Bidwell
Curt & Diane Brewer
Kathy & Paul Bushnell
Jerry & Jo Church
William S. Cowles
Beverly Cramer
Philip Custer Family
Michael D'Alfonso
Norma & George* Dallal
Michael C. Daly
John Crant & Cynthia Delgado
J.R. & Peggy Dotson
Clare W. Dreyer
Charles & Candice Easterling
The Egg & I
Diane Fisher
Art & Sonya Gardenswartz
John & Donna Goodwin
Nancy Haines
The Higgins Family
Deborah & Richard Hoffman
Kristin & Barry Hogge
Judy & Sam Honegger
John & Michelle Hood
Tommy & Karen Hudson
Connie Johnson – Keller Williams Realty
Leslie & David Kim
Leean Kravitz & Family
Henry & Judith Lackner
Linda DiPaolo Love & Stephen Love
John & Millie McMahon
Kirk Meyer & Kristy Ott-Meyer
Beth & Steve Moise
New Mexico Bank and Trust
Thomas & Debra Novak
Greg & Diane Ogawa
Anne & Joseph L. Ponce
Kathleen & Will Raskob
Ogden & Roxana Reid
Nancy Ruggles
Sandia Laboratory Federal Credit Union
Joseph & Anna Santangelo
Ron & Meryl Segel
Paul & Karen Sowards
Stanley & Marilyn Stark
Susan & James Strode
Susan Strome & Laurel Moodie
P.K. Strong
Duffy & Jean Ann Swan
Charles & Leslie Thompson
Alicia & Peter Touche
Charles Vigil
Linda & Steve Wedeen
Helen Wertheim
Janice Bader Yates

PUBLIC PHASE, 1000 HELPING HANDS & DANCE-A-THON 2012 DONORS

Anonymous (4)
ABQStages
Luis Aguajo
Raul Aguilar
The Albuquerque Museum of Art & History
Adrian Alire
Lori Allen
Alliance Glass & Mirror
Shirley Anderson
Tiffany Marie Anderson
Tim Anderson
Alan Andrews
Tom & Keri Antram
Quirino Aragon
Sam Aragon
Nancy Jo Archer
Judy Aron
Artichoke Cafe
Patricia Arzate
Mr. & Mrs. Atwood-Kieckhefer
Mary E. Baca
Betty Baca
Stella Silva Baca
Russell Baker
Jeremy & Monica Banghart
Madalyn Barfield
Wendy Barker
Jane Barkley
Laurie Basloe
Robert, Savanah & Nicole Batt
Marie & Tim Bedah
Paco Beckley
Pat Belleto
John & Mary Besse
Betty's Bath & Day Spa
Stan & Gay Betzer
Brianne Bigej & Eric Tomala-Viteri
Mary Birnbaum
Nancy & Cliff Blaugrund
Ann Blaugrund & William Redak
Jennie Blea
Kaleen Blosser
Byrl Blount & Marla Kay Blount
Ms. Lindsey Bogard
Jo Ann Bolleter
Corina Bonilla
Ron Bousek
Beth Brennan
Eleanor Briggs
Bingham Bright
Victoria Broadus



Brown & Brown Insurance of NM, Inc
Barbara Brown
David Bruner
Lynn Buckingham
Susan Bullerfield
Brian G. Burnett



Business Environments
Diane Butler
Loral Butler
Don & Mari Bynon
Cristiane C de Oliveira
Cardinal Health
Chris & Mary Carrasco
Donna Carrasco
Randal Carter
Casa De Rosa Assisted Living
Casa Verde Spa
Cashmere Rouge Spa
Natalia Casiano
Jessica Caswell
Joe & Georgia Catasca
Chocolate Donut Laboratory
Yan Chen
Jerry & Jo Church
Jason Church
Jimmy Church
Citi
Clear Vision Multi Services
Lynn Coburn
Robert Cohen
Robert Cohen Co. LLC
John Collins
Brian & Aleli Colon
Idell Conaway
Judy Corazon
Jeanette Cordova & Doug Ayres
Tom Cordova
Beverly Cramer
Felma Cravens
Natasha Crawford
Sara & Alex Crecca
Jacques d'Amboise
Teri Davis
Stephen & Deborah Day
Ivan DeAnda
Liz De Kinder
Margaret DeLang
Caroline Dennis
Stella & Diana Devine
Steve Parraz & Pamela Devine
Winnie Devore
Patricia Dickinson
David Dinwoodie & Suzanne Oakdale
Bill & Christin Dobbeck
Jennifer Dodrill
Lacey Dolney
Susanne Dominguez
Ann Dowdy
Lisa Driscoll
Claire Ellen Dudley
Emily Dunkin
Stephanie Dunn
Theresa Duran
Nick & Sandra Durrie
Bill & Suzanne Ebel
Ken Eberhard
Judy Ebrey
Ms. Michelle Elder
Gayle Elledge
Greg & Barbara Ellena
Michelle Ellis
Delvin & Lisa Ellison
Ms. Janet Ellison
Trod Elsbrock
Emcore
Jan English
Jose Escobarr
Judy Estrada

Eleanor Estrada
Gail Evans
Joel Fadness
Mrs. Susan Feil
Alicia Feil Peterson & J.C. Peterson
Sid Fendley
Fidelity Investments
Michele Flater
Jane Flax
Claudia Flores
Maria & Ricardo Flores
Cardinal Health
Chris & Mary Carrasco
Donna Carrasco
Randal Carter
Casa De Rosa Assisted Living
Casa Verde Spa
Cashmere Rouge Spa
Natalia Casiano
Jessica Caswell
Joe & Georgia Catasca
Chocolate Donut Laboratory
Yan Chen
Jerry & Jo Church
Jason Church
Jimmy Church
Citi
Clear Vision Multi Services
Lynn Coburn
Robert Cohen
Robert Cohen Co. LLC
John Collins
Brian & Aleli Colon
Idell Conaway
Judy Corazon
Jeanette Cordova & Doug Ayres
Tom Cordova
Beverly Cramer
Felma Cravens
Natasha Crawford
Sara & Alex Crecca
Jacques d'Amboise
Teri Davis
Stephen & Deborah Day
Ivan DeAnda
Liz De Kinder
Margaret DeLang
Caroline Dennis
Stella & Diana Devine
Steve Parraz & Pamela Devine
Winnie Devore
Patricia Dickinson
David Dinwoodie & Suzanne Oakdale
Bill & Christin Dobbeck
Jennifer Dodrill
Lacey Dolney
Susanne Dominguez
Ann Dowdy
Lisa Driscoll
Claire Ellen Dudley
Emily Dunkin
Stephanie Dunn
Theresa Duran
Nick & Sandra Durrie
Bill & Suzanne Ebel
Ken Eberhard
Judy Ebrey
Ms. Michelle Elder
Gayle Elledge
Greg & Barbara Ellena
Michelle Ellis
Delvin & Lisa Ellison
Ms. Janet Ellison
Trod Elsbrock
Emcore
Jan English
Jose Escobarr
Judy Estrada



Joanne Godwin
Johnny & Donna Godwin
Lois M. Godwin
Dr. Herman Allen Godwin, Jr.
Renee Godwin
Juno Godwin
Adam Golson
Antoinette Gonzales
John Gonzales
Ramon Gonzales
Ray Gonzales
Patsy Gonzales
Betsy Goodman
John & Donna Goodwin
Marcia & Saul Gordon
Norma Gordon
Mary Beth Greulich
Lainie & Malcolm Grimmer
Ginger Grossetete
Maria Grundy
Elizabeth Guerra
Althea R. Guist
Mike Gurule
William Gupton
Mr. & Mrs. Pod Felipe Gutierrez
Vilma & Anibal Gutierrez
Christine Hall
Eric Hannum
Cheryle Hannum
Ernest Hardin
Isabella & Annelise Harvey

Clark Haskins
Mr. & Mrs. Daniel Haughey
Lindsey Hemmert
Cheryl Henderson
Suann Hendren
Gregory Hendricks
Heredia Family
Mary Herman
Adriana Hernandez
Brandon Hidalgo
Vincent & Kesha Hietala
Hinkle Family Fun Center
Cyrus & Jane Hoffman
Homewise/Homestart
Julia Hunkins
R. Inigo
Deborah Jacks
Rose Ann James



Jim & Medora Jennings
Sovereign & Nana Jepson
Regina Johnson
Leslie Nathanson Juris & Hervey A. Juris
The Kapela Family
Barbara Kastner
Anna Harmon Keeney
Samuel & Susan Keith
Tom & Greta Keleher
Betty Kelly
Nadia Kelly
Perry Kelly
Nam Nidhan Khalsa
Leslie & David Kim
Calvert King
David & William Kinney
Lasha Kirker
Klinger Constructors, LLC
Gene & Ande Kok
Emily & Sara Koplik
Robert & April Kopp
Flora Kubiak
Jason & Carla Kugler
Kim Kulb
Bob & Patty Kuning
Becky Labbate
Ted & Cecelia Lambert
Katherine Lazarus
Sarah Lemon
Allegra Lillard
Susan Lindner
Roscoe Loclie
Frances Lopez-Bushnell
Kristy Lopez
Los Alamos Ski Club
Emily Lowman
Yolanda Lujan
Josie Lujan
Suzanne Lynam
Linda MacDonald
Rachel Manes
Marcello's Chophouse
Fred March
Alexus Marez
Patricia Martinez
Mr. Jesse Martinez
Charlotte Martinez
Edward & Jeanette Martinez
Margaret Matakovich
Logie Mathis
Max McClellan
Joanne McCloskey

David McCloskey
Laurel McCloskey
Lisa McCulloch
Curt & Cindy McGill
Josh McLaughlin
Polly McLaughlin
Caroline & Tom Meade
TJ Meade
Ms. Jennifer Medeiros
Laura & Humberto Mediano
Vivian Mello
Denise & Bob Moedl
Shelly Moline
Jose Montano
Elias Montano
Juay Montoni
Laurel Moodie
Kai Morgan
Blaze Morgan
Ian & Ellyn Morrison
Brad Morse
Janet Moses
Leslie Mouser
Matt Myer & Katie Cunny
Mary Napoleone
S. Naranjo
Maureen Naranjo
Laetitia Narvaez
Tambra Nash
Jennie Negin & Harold Folley
Lori Neitzke
Spencer Nelson
Jean Nelson
Tracy Nichols
NM Ear, Nose, Throat Specialists, P.C.
Sylvia Nolasco
Jennifer Noyer
Kathy & Riley Nunn
Ellen Ochoa
Caroll Lee O'Keefe
Kristin Oreskovich & Ian Cheng
Emilina Pacheco
Lucille Padilla
Leticia Palacios
Eric Pantoja
Ella & Alfred Park and Jessica Perez
Aidan Parra
Jeanne Parrella
Ms. Jennifer Patino
Suzanne Pearlman
Itzel Perez
Leslie Perlman



Steven C. Perlman
Cecily Peterson and David Sokoloff
Don & Gwen Peterson
Bella & Henry Pettine
Margarita Pinon
Valerie Platt
Popejoy Hall Center for the Arts UNM
Leslie Porter
Diane Prokipchak
Bill Puretz
Pamela Rael
Dr. Barry & Roberta Ramo
Miriam Rand & Ona Porter
Amelia Ranney
Jennifer Rawley

Roger & Kari Reese
Celimar Reines
Marty & Gary Rice
Donna Ridder
Diana Ristenpart
Geoffrey Roberts
Rock Gap Engineering
Howard Rogers
Beverly Rogoff
George & Nance Rose
Phillip M. Ross
Frances Rosson
Wendy Rubin
Dolores & David M. Sala
Paul Sanasec

Andrew Sanchez
Kristopher Sanchez
Shelby Sanchez
Susan Sanchez
Geri Saunders
Lisa Sawtelle
Sara Schlomann
Amy Schovanec
Ed Schovanec
Matt Schovanec
Virginia Scott
John & Rose R. Sena
Edna Sewill
Ms. Jessica Shaffer-Gant
Jim Shannon
Ronald Shettlesworth
Tom Shippley
Laura Siegel
Veronica & Alessandra Silva
Barry Simon
Ann & David Simon
Mike Simpson
Carolyn Sinor
Rod Skiver
Hima Bindu Smelser
Debbie Smith
Georgia and Lee Smith
Shepard Sobel
Azeneth Sotelo
Roy Soto
Corey & April Spaulding
Carin Spragg
Sprint
Patty Stephens
Meredith Stevenson
Diane Stoner
Kelly & Robert Stranahan
Frances Stuart
Janet Suleski
Samuel Sullivan
Amy Sweet
Eli Tafoya
Barbara & Jim Talent
Jaime Tamez
Gene & Socorro Tarango
Gene Tatum & Pat Hester
Dustin Teel
Alexis Telle
Carrie & Brian Terrell
Allan & Evie Tinkcham
Dr. Steven Tolber & Ms. Louise Campbell-Tolber
Noel Tomingas
Bob Toppert
Torgrumson Family
Len and Liz Trainor
Frances Trentham & Ross Martinez
Lonnie Trujillo
Gary D. Trujillo
Josie Trujillo
Antonio Trujillo
Anna Trujillo
Dee & John Turner
Maggie Ryan Turner
Christopher Turpen

Dee & John Turner
Tux Window Cleaning
Daina Urbaitis
Daniel Urioste
Lesley Urquhart
Socorro Varela



Rigoberto Varela
Arturo Vargas
Benigno Vasquez
Gloria Velasquez
Mr. & Mrs. Verstynens
Michelle Vieger
Ms. Caitlin Wallace
Aaron Wanneka
Lori Webster
Charles & JD Wellborn
Robyn & Patricia Wellman
Forrest Wellman
Clinton Byron Wells
Erin West
Western Building Supply
Merida Wexler
Vennie Eline White
Elizabeth Perez Whitmer
Chris Whitney
Whole Foods Market
Gretchen K. & Shane Williams
Phyllis T. Winsko
Ann & Wayne Wolf
Sophie Wood
Edgar Wood
Ivan & Marianne Wright
Ms. Mary Helen Young
Janet Youngberg
Zaklina Zera
Heather Zimny

IN KIND DONATIONS

Chaparral Electric Co., Inc.
City Treats Parties
Steve Cullins
Sue Ellen & John Debeer
Susan Feil
Veronica Gonzales
HP
Klinger Constructors, LLC
Sennheiser
Studio Southwest Architects
Summit Electric Supply
Kathleen Tennant
Thornburg Investment Management

List complete as of March 20, 2013. Every effort has been made to present a complete and accurate list of donors. We apologize for any errors or omissions and invite corrections.

* Deceased

Prep admires
your core four
values, NDI.

we applaud these
students who shine
at NDI and Prep:

here's to working
hard, doing your
personal best,
never giving
up, and making
healthy lifestyle
choices.

giovanni lozoya acosta
sydney pope
taylor ellis

laura garrett
jordan mazur
marissa sanchez
joseph murray

FOCUSED

Prep means Prepared. Ready for Anything.

Tuition Assistance Available



Mike Multari Director of Admissions
mmultari@sfbprep.org 505 795 7512

Congratulations NDI-NM for all you do to teach children excellence.

Congratulations Statewide CELEBRATION GRADUATES

Celebration Team members are dancers who are invited to join the team after excelling through the Super Wonderful Advanced Team and demonstrating excellence and model behavior.



MARIZABELLA ACEVES, Public Academy for Performing Arts, Albuquerque - "I've been dancing with NDI New Mexico for five years starting in the 4th grade. NDI New Mexico is my pride, joy, and passion. If it were not for NDI New Mexico, I would not have improved as much as I did."



AUBREY ALDAZ, Pojoaque Valley Middle School, Pojoaque - "NDI New Mexico has given me endurance and flexibility. It means everything to me. I love it so much. I think everyone should have a chance to be in NDI New Mexico. It is a fantastic program!"



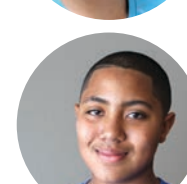
GRACHY ARBALLO, Pojoaque Valley Middle School, Pojoaque - "NDI New Mexico means a lot to me because it has given me self-confidence. One thing that I love about it is it helps people become better people."



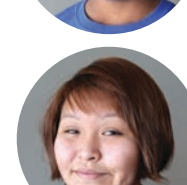
CECILIA ARAGON, Truman Middle School, Albuquerque - "This is my fifth year dancing with NDI New Mexico. It has a special place in my heart because it brings me joy and happiness."



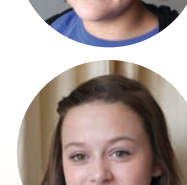
MARISOL ARCHULETA, Mesa Vista Middle School, Ojo Caliente - "NDI New Mexico has given me self-confidence and strength. It means everything to me. If there was no NDI New Mexico I would be lost. It has opened up so many doors for me."



DONOVAN AUSTIN, McKinley Middle School, Albuquerque - "Throughout my five years with NDI New Mexico. I've learned to work hard and never give up at whatever it is I'm trying to accomplish. I will keep with me all that I've learned for many years to come."



SHANDIIN BENALLY, Jefferson Middle School, Albuquerque - "In my five years I've learned to love my second family. NDI New Mexico gives me something to look forward to every Saturday. There's nowhere I'd rather be!"



MAGGIE BENNETT, Gonzales Community School, Santa Fe - "NDI New Mexico has taught me to never say never and to always believe in myself. Dance allows me to express my inner emotions and with NDI New Mexico's help, I feel that I have become a better person."



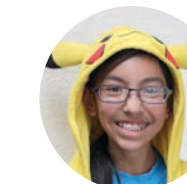
FELICIA BLEA, Tierra Adentro Middle School, Albuquerque - "I really love to dance and I'm glad to have the opportunity to be in NDI New Mexico. It is my home away from home. I'm sooo happy that I have NDI New Mexico in my life."



KEILY CASTRO, Harrison Middle School Albuquerque - "NDI New Mexico has been a big part of my family. It has taught me so many things about myself. When I'm dancing on stage, I feel confident and I can be myself around everyone."



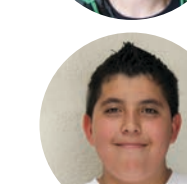
MYKAELA CHAPARRO, Jimmy Carter Middle School, Albuquerque - "In my five years at NDI New Mexico I have learned to work hard and never give up. I'm going to use these skills in life to be successful. I love the teachers and my friends. I'm going to miss you."



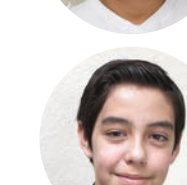
BRITTANY CHATO, Pojoaque Valley Middle School, Pojoaque - "Before NDI New Mexico I was very shy and quiet. With NDI New Mexico I have found my confidence and my love for performing arts. I love NDI New Mexico!"



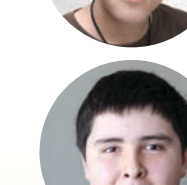
TAYLOR ELLIS, Santa Fe Prep, Santa Fe - "NDI New Mexico has given me confidence and it is a place to go where every dancer and teacher cares about you. NDI New Mexico makes me feel amazing and pushes me to strive for perfection."



ULISES ENRIQUEZ-MEDINA, Carinos Charter School, Española - "NDI New Mexico gave me the moves for dancing. It was the reason to do my best, work hard, and never give up. NDI New Mexico was the reason that I like to dance."



DEVON EWY, Pojoaque Valley Middle School, Pojoaque - "NDI New Mexico has given me talent, strength, courage and the will to perform in front of anybody whether I am singing, dancing, acting, or drumming. I love NDI New Mexico so much!"



DIEGO FUENTES, Cien Aguas International School, Albuquerque - "NDI New Mexico has a special place in my heart and I will remember it as the greatest time I ever had."

TEACHING CHILDREN EXCELLENCE



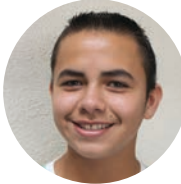
MIKIELA GALLEGOS, New Mexico School for the Arts, Santa Fe - "NDI New Mexico taught me to keep trying and never give up. Thank you NDI New Mexico for teaching me this."



CRISTIE GARCIA, Carlos F. Vigil Middle School, Española - "The greatest gift NDI New Mexico has given me is that I can become a healthier and stronger person. It is the best program I was ever introduced to and it inspires me to be a good, hard-working person."



ELMIRAH GARCIA, Santa Fe Indian School, Santa Fe - "NDI New Mexico has given me the best thing - a great dance experience and good friends. I love NDI New Mexico and it inspires me in so many ways."



MATEO GARCIA, McCurdy Charter School, Española - "NDI New Mexico has given me an opportunity to express myself in dance. I think NDI New Mexico is a fun thing for kids to do and it inspires me to stay true to myself."



ROXANA GUTIERREZ, Tierra Adentro of New Mexico, Albuquerque - "NDI New Mexico makes up a big part of my life and I am super happy that I had the opportunity to dance with you. Thank you NDI New Mexico!"



SELMA GUTIERREZ, Capital High School, Santa Fe - "Don't walk...dance. Don't frown...smile. Thank you, NDI New Mexico, for teaching me to never give up."



DAVID JACOBO, Santa Fe High School, Santa Fe - "By using song and dance as inspiration, NDI New Mexico taught me to believe I can achieve when I put my heart to a path of success. It was never about who was the best, but who worked the best."



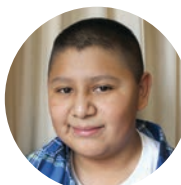
RHEALYN LANDGREN, Pojoaque Valley Middle School, Pojoaque - "NDI New Mexico has given me self-confidence. It means so much to me. NDI New Mexico inspires me to continue dancing."



JAVIER LIRA, Capital High School, Santa Fe - "Shy isn't you, when you are a dancer...especially if you are an NDI New Mexico dancer! Thank you for the memories, I will dance in the streets forever!"



DIEGO LOYA, Capshaw Middle School, Santa Fe - "What NDI New Mexico really means to me is to always do my best and never give up. It inspires me and makes me feel proud of myself all the time."



DANNY MALDONADO, Tierra Encantada Charter School, Santa Fe - "I'm so grateful that NDI New Mexico was created! It means a lot to me and inspires me to do my best. I will always have you in my life!"



ANDY MARTINEZ, Washington Middle School, Albuquerque - "NDI New Mexico has taught me a lot in five years. It taught me to work hard, never give up, do my best, and be fit. Thank you! I will never forget you."



CASSANDRA MARTINEZ, Pojoaque Valley Middle School, Pojoaque - "NDI New Mexico has given me the chance to express myself through dance. It has inspired me to never give up and to reach for the stars. I can never thank you enough for the creativity it has given me."



MARIO MARTINEZ, Carlos F. Vigil Middle School, Española - "NDI New Mexico has given me the opportunity to express myself through dance. It has boosted my self esteem, confidence and has been an excellent program that I will never forget."



JORDAN MAZUR, Santa Fe Prep, Santa Fe - "Some people think dance is just a hobby. For me it's so much more than that. NDI New Mexico has taught me to fall down seven times and stand up eight and I will carry that with me for the rest of my life."



ISABEL MEEKS, Washington Middle School, Albuquerque - "NDI New Mexico is really great to be with! It has taught me to never give up and do my best through life and dancing. It is my family and it is going to be hard to leave."



JOSELINE MENDOZA, Public Academy for Performing Arts, Albuquerque - "I am proud of myself for how I have improved physically and mentally. I want to thank all of my NDI New Mexico teachers who have helped me to succeed."



AURORA MONTANO, South Valley Prep, Albuquerque - "I have been in NDI New Mexico for five years. When I first got in NDI New Mexico, I was not very good. But I never gave up and now I am active and healthy. Thank you, I love NDI New Mexico!"



DAVID MONTANO, Gonzales Community School, Santa Fe - "NDI New Mexico has taught me to work hard, do my best, and never give up. It has raised my self-esteem and made me a better person."



HASANA MONTANO, South Valley Prep Albuquerque - "When I first began NDI New Mexico I wasn't very good, but I worked hard, did my best and I never gave up. I have to tell Jackie, 'Thank you for everything and being there for me.' Thank you to all the staff members."



KAI MORGAN, Santa Fe School for the Arts & Sciences, Santa Fe - "Even though I haven't been at NDI New Mexico for that long, I feel like I have become close with everyone. I have grown as a dancer. Thank you for helping me become a better performer, dancer, and person."



JERRY MOYLE, Jackson Middle School Albuquerque - "I have been with NDI New Mexico about six years. It means meeting new friends, learning new dances, and having fun."



KAILA NEUENSCHWANDER, Academy for Technology & the Classics, Santa Fe - "NDI New Mexico will always have a place in my heart. You have built my character into a hard working human. Thank you for inspiring the love of dance in me."



JESSICA OJEDA, Public Academy for Performing Arts, Albuquerque - "I have been dancing with NDI New Mexico for five years. It has helped me find my passion for dance and has helped me grow as a dancer. Thank you!"



VICTORIA ORTEGA, Capshaw Middle School, Santa Fe - "NDI New Mexico has taught me to express myself and how to be professional. Thank you!"



SHANNON PILLADO, La Rosalana Leadership Academy, Albuquerque - "I love NDI New Mexico because I love to dance and express my feelings through dance. It also means to show respect and follow your dreams. Thank you for all your help making me a better dancer."



HUGO PIZANO, Carlos F. Vigil Middle School, Española - "NDI New Mexico has taught me excellence and has helped me develop my passion for dance. This experience will always be in my heart. Thank you!"



RAYLYNN QUINTANA, Carlos F. Vigil Middle School, Española - "NDI New Mexico has opened my heart to music and dance! I have a passion for dance and NDI New Mexico has allowed me to express myself in many ways! Thank you!"



MILDRED RODRIGUEZ, Monte de Sol, Santa Fe - "NDI New Mexico has taught me to be strong and stay strong, and that life goes on. You meet many people and enjoy new experiences, but at last the only thing that is left is a memory. NDI New Mexico is my beautiful memory!"



AMELIA ROGERS, Academy for Technology and the Classics, Santa Fe - "NDI New Mexico has given me courage and strength in so many ways. It means everything to me and has made me feel like I can accomplish anything."



ELENA ROMERO, St. Michael's High School, Santa Fe - "If my life were a story, NDI New Mexico would take up a whole chapter. I'm really going to miss everybody. 'Don't cry because it's over. Smile because it happened.'" -Dr. Seuss



JADEN ROMERO, South Valley Prep, Albuquerque - "NDI New Mexico is very important to me and it has taught me to always do my best and never give up! These three words help me on tests and in everyday life. I would like to thank Jackie Oliver and NDI New Mexico."



STEPHANY RUTLEDGE, St. Michael's High School, Santa Fe - "NDI New Mexico was an amazing experience to be a part of. I will never forget any of the amazing memories I've made, or how much I've come to learn."



ARTURO SAPIEN, Truman Middle School Albuquerque - "NDI New Mexico has been like family to me. I really enjoyed dancing and getting to know new friends and how to work with others. It's something I won't forget and I thank everyone, friends and teachers."



SABRINA SLUSSER, Harrison Middle School, Albuquerque - "Being in NDI New Mexico for six years has changed everything. It is the longest I have ever been a part of any program. I believe it is important for anyone who begins, to finish, just like I have."



MEG STUART, Home school, Santa Fe - "NDI New Mexico means so much to me and has inspired me in so many ways. It has given me the gift of dance. I am a dancer—no one can change that. Thank you!"



ABIGAIL TORRES, Harrison Middle School Albuquerque - "I love the feeling I get when it's time for the show. It's an exciting feeling. I meet new friends every year. To me NDI New Mexico is like another family and I just love to dance!"



SAMANTHA VIGIL, Aspen Community Magnet School, Santa Fe - "NDI New Mexico has taught me to smile, and has given me self-confidence. It has made me strong, and a better academic student."



SARA VIGIL, Cien Aguas International School, Albuquerque - "NDI New Mexico has meant so much to me because I have met so many friends. I learned to never give up and to try new things. It has been such a great experience dancing with NDI New Mexico, this is my second family."



JESSICA WEBER, St. Michael's High School, Santa Fe - "NDI New Mexico has given me the power to believe in myself. It is my second home and it's where I go to get rid of all my problems. NDI New Mexico inspires me to be who I am and love myself."

we're behind you

200%

No artificial flavors,
no added preservatives.
Since 1886.
open happiness®

©2012 The Coca-Cola Company.

ALBUQUERQUE JOURNAL



What's in it for me?

“Info we need
on the go.”



Venue • Food • Home • FIT Magazine • Travel
Something for everyone—delivered to your home and online.
Sunday delivery with daily *eJournal* for under 30¢/day!
Subscribe at abqjournal.com/whats or 800-577-8683.





Baxter's Bunch

Hey kids!

When you join my club you get a cool prize every time you make a deposit into your savings account. Plus, you'll learn fun ways to save money. So bring your parent or guardian in to your closest Del Norte Credit Union branch and sign up today.

www.dncu.org/site/learn_teachchildren.html

NCUA
National Credit Union Administration, a U.S. Government Agency

del Norte
CREDIT UNION

A Home for Your Family. Now's the Time



Homewise is with you through every step of the homebuying process. Call to get started today.

Santa Fe
505-983-WISE (9473)
www.homewise.org

Albuquerque
505-243-6566
www.homestartnm.org

 **homewise**
your partner in homeownership

 **NeighborWorks**
collective wisdom

Congrats NDI New Mexico





Way to stay on your toes.

For helping the children of New Mexico achieve positive outcomes by instilling discipline and self-confidence through your programs!

Like a good neighbor, State Farm is there.®

Cheryl Baker LUTCF, Agent
4061 Ridge Rock Rd SE
Rio Rancho, NM 87124
Bus: 505-891-9111
www.cheryl bakeragency.com

 **State Farm**™

1001060.1

State Farm, Home Office, Bloomington, IL

41

For your second encore performance,
see how these Toyotas dance.



VISIT YOUR LOCAL TOYOTA DEALER FOR A TEST DRIVE.

BEAVER TOYOTA OF SANTA FE
1500 ST. MICHAELS DRIVE
(505) 982-1901



Options shown. *2012 EPA-estimated mpg 44 city/40 highway/42 combined mileage for Prius v. *2012 EPA-estimated mpg 53 city/46 highway/50 combined mileage for Prius c. *2012 EPA-estimated mpg 51 city/48 highway/50 combined mileage for Prius. *2012 EPA-estimated 51 city/48 highway/50 combined mpg for Prius Plug-in. Actual mileage will vary. *2012 EPA combined estimated 95 miles per gallon gasoline equivalent rating. MPGe includes consumption of electricity and gasoline energy during EV mode. Actual results will vary. See fueleconomy.gov.



Present this ad for \$10 off your meal.
Not valid with any other coupon. Restrictions apply.

Yannis
CATERING & EVENTS
3109 CENTRAL | NOB HILL
YANNISANDOPABAR.COM
RESERVATIONS: 505.268.9250
FORTHGOOD.CO

Experience
Synergy
in Motion™

Helping New Mexico
dancers stay strong and
injury free for over 15 years.
Synergize your fitness.

**NOW TWO
LOCATIONS
NOB HILL
& NE HEIGHTS
OFFERING OVER 30
PILATES CLASSES PER WEEK**

MOMENTUM
studio

NE HEIGHTS: 10900 MENAUL BLVD NE
NOB HILL: 3001 MONTE VISTA BLVD NE

296.4080 • MOMENTUMSTUDIO.COM



**Delicious HOMEMADE Specials
EVERY DAY!**

Breakfast • Lunch • Dinner
Patio Dining

Open 7 days a week 6am–9pm

2900 Central Ave SE
505.265.1669

manniesnobhill.com

Transitional Blanket c. 1880's



61 Old Santa Fe Trail
Santa Fe, NM 87501
505.983.9241
www.shoppackards.com

Fine Jewelry, Exceptional Navajo Weavings, Pueblo Pottery,
Museum Quality Katsinas, Silver & Ceramic Serve Ware
Authorized ROLEX Jeweler

packards
THE TRUSTED SOURCE
On the Plaza, Santa Fe

NDI New Mexico

STAFF

For employment
opportunities,
visit us at
www.ndi-nm.org

EXECUTIVE STAFF

Russell Baker
Executive Director

Mark Gladden
Senior Director of Development

Liz Salganek
Associate Artistic Director

Gretchen K. Williams
Albuquerque Director of
Development

Maria Wolfe
Director of Business &
Administration

ADMINISTRATIVE STAFF

Shannon Allard
Albuquerque Bookkeeper/
Office Manager

Robert Benavidez
Dance Barns Facilities Manager

Ruben Corriz
Dance Barns Custodian

Cheryl Henderson
Hiland Custodian

Nam Nidhan Khalsa
Bookkeeper/Office Manager

Richard Tarango
Hiland Facilities Manager

DEVELOPMENT & PROGRAM STAFF

Tiffany Anderson
Albuquerque Development
Associate

Morgan Colonna
Senior Development Associate

Lindsay Dandeo
Grant Writer

Aline Harris-Ellis
Santa Fe Development Manager

Brian Jensen
Philanthropy Research Analyst

Barbara Kastner
Grants & Projects Manager

Kristin Macdonald
Marketing Communications
Manager

Aase Martinez
Santa Fe Gala Coordinator

Laurel McCloskey
Albuquerque Events Assistant

Cecily Peterson
Albuquerque Membership
& Special Events Manager

ARTISTIC & PROGRAM DIRECTORS

Dara Beckley
Associate Hiland Director

Brian Bennett
Santa Fe Associate
Music Director

Ryan Bridwell
Albuquerque Music Director

Cristiane C de Oliveira
Residency Director

Bert Dalton
Music Director

Steve Figueroa
Albuquerque Associate Music Director

Maki Kimura
Residency Music Director

Allegra Lillard
Dance Barns Director

Dan Lizdas
North Music Director

Emily Lowman
Santa Fe Outreach Director

Jackie Oliver
Albuquerque Artistic Director

Tom Porras
Albuquerque Advanced Training
Director

Leslie Stamper
North Artistic Director

ARTISTIC & PROGRAM STAFF

Alise Adams
Hiland Instructor

JoAnn Baldonado Vargas
Santa Fe Assistant SWAT Producer

Wendy Barker
Hiland Instructor

Jessie Bolnick
Albuquerque/Hiland
Instructor

Melissa Briggs
Santa Fe/Dance Barns
Instructor

Lori Brody
Dance Barns Instructor

Julia Burrola
Hiland Instructor

Wendy Chapin
Dance Barns Instructor

April Chavez
Hiland Instructor

Rebecca Chornenky
Dance Barns Instructor

Ariana Davis
Dance Barns Technical Assistant

Tara Debevec
North/Santa Fe/Dance Barns
Instructor

Patricia Dickinson
Hiland Instructor

Jennifer Dodrill
Hiland Instructor

Alicia Eddy
Hiland Instructor

Erica Gionfriddo
Dance Barns Instructor

Myers Godwin
Hiland Technical Director

Annica Graham
North Program Producer

Greg Grissom
Dance Barns Instructor

Dominic Guerra
Hiland Instructor

Karen Hall
Dance Barns Instructor

John Kloss
Dance Barns Instructor

Michaela Knox
Santa Fe /Dance Barns Instructor

Pamela Ladas
Santa Fe Instructor

Robin Lane
Hiland Instructor

Tammy Leyba
Dance Barns Costume Assistant

Luke Loffelmacher
Hiland Instructor

Kirsten Lopez
ABQ 15 Week Program Producer

Kathryn Mark
Dance Barns Instructor

Christa Marti
Dance Barns Instructor

Charlotte Martinez
Santa Fe Instructor

Natalee Maxwell
Hiland Instructor

Joshua McIntosh
Dance Barns Technical Director

Tracey Meisenheimer
Hiland Costumer

Alison Montoya
Santa Fe Program Producer

Shane Montoya
Hiland Instructor

Sylvia Nolasco
Hiland Program Administrator

Taylor Nuzzo
North/Apprentice Instructor

Diana Orozco-Garrett
Santa Fe/Dance Barns
Instructor

Sandra Ortiz
Dance Barns Costumer

Simone Reche
Hiland Instructor

Maya Reese
Hiland Instructor

Zoey Reese
Hiland Instructor

Tracy Ritter
Albuquerque/Hiland
Instructor

Gabi Rojas
Hiland Instructor

Sheila Rozann
Dance Barns Instructor

Alyx Sanchez
Residency Associate

Donna Scheer
Dance Barns Instructor

Erin Schovanec
Albuquerque Program Producer

Nia Sena
Hiland Instructor

Danny Silver
Dance Barns Producer

Michael Wade Simpson
North/Apprentice Instructor

Patty Stephens
Hiland Instructor

Curtis Uhlemann
Dance Barns Instructor

M. Tish Ulibarri
Albuquerque SWAT/
Celebration Producer

Kimberly White
ABQ Apprentice Instructor

MUSIC STAFF

Addela Bransford
Pianist

Justin Bransford
Pianist

Joel Fadness
Pianist

Debby Hanna
Pianist

Julie Herndon
Pianist

Todd Lowry
Pianist

Melanie Monsour
Pianist

Diana Ristenpart
Pianist

Kevin Ward
Pianist



GIVING the GIFT of EXCELLENCE

Every donation makes a difference that can last a lifetime to a child.

Your generous support helps NDI New Mexico teach children perseverance, confidence, and discipline. We are now reaching more than 7,270 students from 254 schools in 35 communities, as well as 70,000 audience members across the state of New Mexico each year. Making an immediate gift, pledging to give over time, or deferring your gift to leave a legacy will create a brighter future for the children of New Mexico.

We are proud to welcome our new Senior Director of Development, Mark Gladden to NDI New Mexico. Mark's development experience includes the Bay Area Discovery Museum, the University of California at Berkeley, and New Mexico State University. Create a lasting legacy by joining our exclusive *Silver Sneakers Society*, or make a substantial gift of cash, real estate, stocks, bonds, or mutual funds, by calling Mark at (505) 231-3428.

NDI New Mexico has designated three circles to honor and thank our donors.

The Circle of Excellence celebrates NDI New Mexico's principal donors who contribute \$10,000 or more in a year.

\$50,000+	Platinum Circle
\$25,000	Golden Circle
\$10,000	Silver Circle

Founders' Circle celebrates NDI New Mexico's donors who contribute annual gifts of \$1,000 or more to provide direct programming support for thousands of New Mexico's children.

\$6,000+	Sponsor-a-Class
\$5,000	Sponsor an Instructor
\$2,500	Support the Advanced Training Program
\$1,500	Sponsor an After-School Scholarship
\$1,000	Sponsor-a-Child

The Circle of Friends is critical to maintaining the fine details that help children directly experience quality.

\$500	Friends for Music
\$300	Friends for Costumes
\$120	Friends for Healthy Snacks
\$50	Friends for Dance Shoes

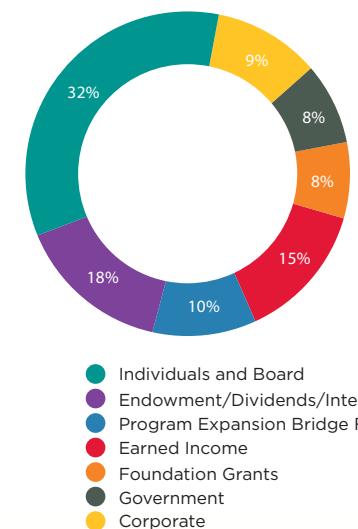
There are many ways to give!

- Online - www.give2ndinm.com
- By Mail - 1140 Alto Street, Santa Fe, NM 87501 or 4800 Central Avenue SE, Albuquerque, NM 87108
- By Phone - 505-983-7646 x 110 or 505-340-0205
- Designate a gift through your United Way. Visit www.liveunited.org for more information.
- Sponsor an event! Contact us at (505) 340-0208 or (505) 983-7646 x 121 for corporate and individual marketing opportunities.



“ I see **FUNDRAISING** as the step that allows **SOCIAL CHANGE** to take place. At the end of the day, I know the **RESULT** of my work is helping to **IMPROVE LIVES.** ”

How we are funded





Sustainability

An essential element for ensuring our future.

Freeport-McMoRan embraces its role as a responsible corporate citizen. We are dedicated to working toward sustainable development by mitigating our environmental impacts and providing beneficial economic and social results wherever we operate.

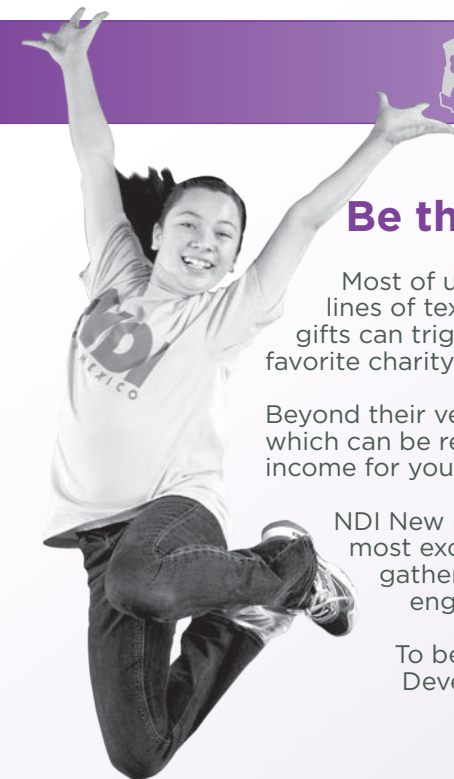
The world needs the metals that we produce to sustain and expand economies and to build necessary infrastructure in developing nations. Fulfilling this need must be balanced with the social and environmental concerns of the communities where we operate. Our pledge is to improve continuously in meeting our commitment to work in the safest and most inclusive, environmentally and socially responsible manner possible.

We're more than mining, we empower progress.

www.fcx.com

FREEPORT-McMoRAN
COPPER & GOLD

Silver Sneakers SOCIETY



Be the change you want to see in the world

Most of us are unaware that a transformative gift involves adjusting a few simple lines of text in our estate plan. Known as a bequest, these "planned" or "legacy" gifts can trigger a staggering increase in the number of lives affected by your favorite charity. And who better to change lives than NDI New Mexico?

Beyond their venerable impact, some planned gifts also provide enormous tax benefits which can be realized immediately, while other types provide a lifelong stream of income for you and your loved ones.

NDI New Mexico celebrates planned giving donors by welcoming them into its most exclusive giving circle: the Silver Sneakers Society. Featuring intimate gatherings in the homes of lead supporters, its members are treated to engaging presentations and riveting private performances.

To become a member, simply contact Mark Gladden, Senior Director of Development at mgladden@ndi-nm.org or 505-231-4328.

Thank you Silver Sneakers Society Members

Ann N. Aceves
Charmay Allred
Russell Baker
Julia B. Bowdich
Cynthia & Alan Coleman
Michael D'Alfonso
Cynthia Delgado & John Crant
Valerie T. Diker*
Diane R. Doniger
Susan Dubin*

Cézanne "Zizi" Fritz
John Herklotz*
Nancy & Tony Jacobs
Michael Jeffers
Medora & Jim Jennings
Leslie Nathanson Juris
& Hervey A. Juris
Jerry & Barbara Landgraf
Linda DiPaolo Love
Dana Merrill

Marcia Miller
Catherine Oppenheimer*
Ambassador Frank Ortiz* (in memoriam)
Jan Paulk
Mara & Charles Robinson
Ann Rutledge
Charles W.N. Thompson, Jr.
Garrett Thornburg*
Eileen Wells
Gretchen & Shane Williams

*Founding Member of the Silver Sneakers Legacy Society

SPOTLIGHT ON JERRY LANDGRAF

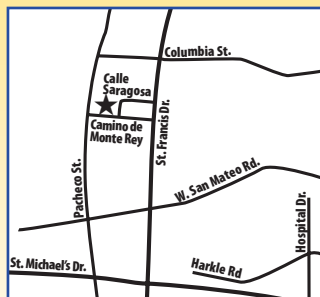
Jerry Landgraf knows the world – from growing up on a farm in Iowa to a successful 33-year career in Healthcare Administration, Jerry has now become a commercial real estate developer and an active community leader. Jerry initially learned about NDI New Mexico after purchasing and renovating several Central Avenue properties in Albuquerque's Nob Hill and Highland areas. His interest in the success of the Hiland Theater renovation project led him to NDI New Mexico's board of directors, where he quickly became chair of the Hiland Theater Building and Finance committees. After attending several performances and in-school classes, and overseeing the transition of the old Hiland Theater into a vibrant place for NDI New Mexico's after school and weekend programs, his belief in the organization's mission led him to become Chairman of the Board.

"When I saw how the kids interacted with the instructors – the entire class – not just one or two individuals – and how enthusiastic they were about the program, I knew NDI New Mexico was living up to its reputation. That's why my wife and I decided to make an estate gift and thereby join the Silver Sneakers Society. The future success of our communities and how well we improve the lives of children are what really matter – NDI New Mexico plays an integral role in that process." ■





AAA APPROVED REPAIR & PREVENTIVE MAINTENANCE



**Tom Hitch & the staff
at Automotive Resources
invite you to visit our
new location!**



**Approved
Auto Repair**

827 Camino de Monte Rey • www.ar-santafe.com

995-9590

**Southwestern
Title & Escrow
is proud to support
NDI New Mexico.**

Together, we're making Santa Fe
a better place to be.



**SOUTHWESTERN TITLE
& ESCROW INC**

Locally owned. Invested in New Mexico.

236 Montezuma Street - Santa Fe, New Mexico 87501
505.820.1800 - sftitles.com



Whether a stage
or a podium...

There's power in the
performance of story telling.

Griffin & Associates provides
communication services that tell
the story and achieve results for
our clients.

Marketing | Public Relations | Advertising

**griffin
& assoc**

www.griffinassoc.com

119 Dartmouth SE, Albuquerque, NM 87106
505.764.4444 | info@griffinassoc.com

Personal insurance...
from a different perspective



Freedom to fully enjoy life is an opportunity that
comes with success.

HUB International's Private Client Advisors can provide you with
a cost-effective, secure method to mitigate risk to your home,
cars, artwork and other assets earned with your success.

To learn more about our different perspective in developing
sound solutions for successful individuals, please contact
Linda Byford, linda.byford@hubinternational.com, and
Edith Montoya, edith.montoya@hubinternational.com, or
contact our office at 505-982-4296.



HUB International Personal Insurance

www.hubinternational.com

At your service in all 50 United States and the provinces and territories of Canada.

start something


Think of the possibilities. **What will you start?**




Call 505-983-8360 or visit
www.bbbsnorthernNM.org to
enroll your child in
Big Brothers Big Sisters today!



Big Brothers Big Sisters
of Northern New Mexico





Proud supporter of
NDI New Mexico

The future goes to Sandia Prep.

SANDIA PREP
sandiaprep.org • 505.338.3000



**CITY OF SANTA FE
RECREATION DIVISION**
PORT MARY COMPLEX • GENOVEVA CHAVEZ COMMUNITY CENTER • SALVADOR PEREZ SWIMMING POOL

We have Something For Everyone!

Genoveva Chavez
Community Center
3221 Rodeo Rd
505-955-4000
www.chavezcenter.com


Salvador Perez Pool
601 Alta Vista Street
505-955-2604

Ft Marcy Complex
490 Washington Avenue
505-955-2500

- Basketball & Raquetball Courts
- Fully Equipped Weight Room
- Cardio Machines
- Classes
- Swimming Pools
- Ice Skating
- Youth Programs and Much More...

Come Check Us Out!

Genoveva Chavez COMMUNITY CENTER



WORTH

NEW YORK

Cris Abbott
Albuquerque
cabbott@worthnewyork.com

Phyllis Frier
Santa Fe
pfrier@worthnewyork.com

WORTHNEWYORK.COM



Supporting
NDI New Mexico
and their impact on
New Mexico's youth!

Come by and Create Your Masterpiece



REPORTER
Best of
Santa Fe
2012

www.frogurt-nm.com





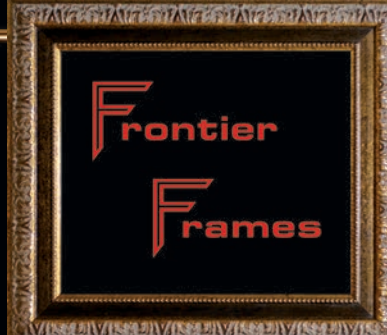


Self-Serve Frozen Yogurt
505-474-6336

2801 Rodeo Rd., Suite B-11, Santa Fe, NM. 87507



frogurt yogurt



While your art knows no bounds, let Frontier Frames showcase your work with quality custom picture framing.

At the Allegro Center • 2008 St. Michael's Drive • 505.473.1901 • frontierframes.net
Serving Santa Fe Artists, Galleries, and Collectors since 1973

YOU made Dance-A-Thon a Success! Thank you!

Matching Sponsors

Corporate Teams & Donors

Coca Cola Bottling Co. of Albuquerque
Griffin and Associates
Isotopes
Jazzercise
Klinger Constructors, LLC
NDI New Mexico
Children, Families, and Friends
New Mexico Dancewear
Rock Gap
Duffy & Jean
Ann Swan

Volunteers

Dr. Barry Ramo
Alpha Tau Omega Fraternity
General Mills
Heart Start
Molina Health
NDI New Mexico
Parents
Sandia Civitan Club
Sprint

INN ON THE ALAMEDA

SANTA FE, NEW MEXICO

1-800-785-2370

INNONTHEALAMEDA.COM

Payne's Nursery supports NDI New Mexico and the growth of today's youth!

With deep roots in New Mexico,
Payne's has been Santa Fe's locally owned
and operated nursery since 1952.

*We'll help you make
your garden grow!*

Payne's South
715 St. Michael's
505-988-9626

Payne's North
304 Camino Alire
505-988-8011

Payne's Organic Soil Yard
6037 Agua Fria
505-424-0336

www.paynes.com

Clothes that live up to your lifestyle

Tues. - Sat. 10-6
7 Caliente Rd. B5, Santa Fe
505.466.1059

Doug West, *Chama Fall*, oil on canvas. 42" h x 62" w

Blue Rain GALLERY

130 Lincoln Avenue, Suite C
Santa Fe, New Mexico 87501
505.954.9902
www.blueraingallery.com

SANTA FE COMMUNITY COLLEGE

Degrees and Certificates from SFCC Open Doors

Accessible ...
Affordable ...
Exceptional ... **Education**

LEARN MORE.
Visit www.sfcc.edu
or call 505-428-1000

Sotheby's

INTERNATIONAL REALTY

Shane Cronenweth, Associate Broker
and
Sotheby's International Realty
Proudly Support
NDI New Mexico

SANTA FE BROKERAGE
231 Washington Avenue
Santa Fe, New Mexico 87501 | 505.988.8088 | 505.577.2000
sothebyshomes.com/santafe

54

55

**PROTECT THE MOST
IMPORTANT THINGS IN LIFE.**



LIFE + AUTO = \$SAVE NOW

I can help you protect your family and save money too.

Introducing the Allstate Auto/Life DiscountSM. Now you can save on auto insurance when you protect your family with life insurance. I'll make it easy to get the quality coverage you need at an affordable price. So why wait? Call me today to put your family in Good Hands[®].



Carolyn W. Baca
(505) 820-1442
3454 Zafarano Dr Ste. A-1
Santa Fe
carolynbaca@allstate.com



Insurance, discounts and savings subject to terms, qualifications and availability. Discount and availability varies by state and product line. Life insurance issued by Allstate Insurance Co., Northbrook, IL, Lincoln Benefit Life Co., Lincoln, NE and American Heritage Life Insurance Co., Jacksonville, FL. © 2011 Allstate Insurance Company.



FRIGURT
Self-Serve Frozen Yogurt
505-474-6336



2801 Rodeo Rd., Suite B-11, Santa Fe, NM. 87507

Magic Mobile Home Supply

**TOP TO BOTTOM. INSIDE AND OUT.
WE HAVE WHAT YOU NEED FOR YOUR
MOBILE HOME!**

8715 Central Ave. NW | Albuquerque NM 87121
P: 505.831.1601 | F: 505.831.1603 | 800.201.1601

445 E Foster Rd | Las Cruces NM 88005
P: 575.680.2217 | F: 575.680.1242

email: sales2@mhparts.com

shop: www.MagicMobileHomeSupply.com
www.mhparts.com

follow us on twitter: @mhparts.com



We are an authorized
Distributor of Intertherm[®]
heating and cooling products.

**BOSQUE
SCHOOL**
scholarship • community • integrity

A challenging college
preparatory
education
emphasizing
the arts,
service learning
and science
in the *bosque*
for grades 6 - 12.

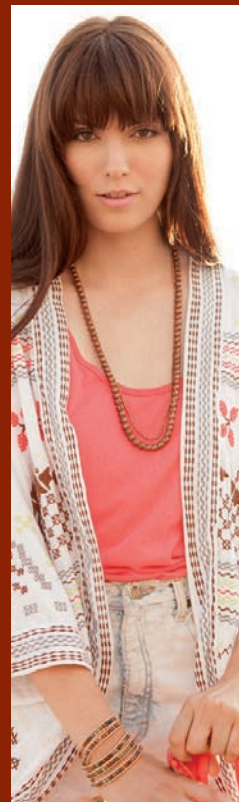


apply online www.bosqueschool.org



505.898.6388

4000 Learning Road NW • Albuquerque, NM 87120
one block south of Coors & Montañito



Kioti

Clothing

Chalet Johnny Was Yasuko Kurisaka

Sanbusco Center
500 Montezuma
Santa Fe New Mexico
505.984.9836



ALCON
ENTERTAINMENT[®]

ALCON ENTERTAINMENT PROUDLY SALUTES
NDI NEW MEXICO & CONTINUES
TO SUPPORT THE ARTS IN NEW MEXICO



Proud Supporter of
NDI New Mexico



"Looking Back"

Artist: Guo Ming Fu, Watercolor
Represented exclusively by Asian Adobe

ASIAN ADOBE

ANTIQUE FURNITURE, ART AND ACCESSORIES

310 Johnson Street Santa Fe, NM
1 block West of Georgia O'Keeffe Museum
505.992.6846 asianadobe.com



Chinese
Translation:
Dance



Summer
Programs for
students in
grades 3 - 12

505.898.6388

www.bosqueschool.org

Thank you

ANNUAL FUND SUPPORTERS

*NDI New Mexico is grateful for every gift we receive! Contributors to the annual fund, for both program support and the Galas, are recognized for the time period April 17, 2012 through March 18, 2013. Please know that every effort has been made to present a complete and accurate list of our supporters. We apologize for any errors or omissions and appreciate your corrections. **For a listing of our Campaign for Albuquerque donors, please see pages 31-33.***

- ☼ Annual fund contributor for 3+ consecutive years
- ♥ Gala supporter
- * Deceased

CIRCLE OF EXCELLENCE

PLATINUM CIRCLE \$50,000+

City of Albuquerque - Family & Community Services
Valerie T. & Charles Diker ☼♥
Millstream Fund
Catherine Oppenheimer ☼♥
Mara & Charles Robinson ☼♥
State of New Mexico - Department of Health ☼
Garrett Thornburg ☼♥
Thornburg Foundation ☼
S.P. & Estelle Yates Family Foundation ☼

GOLDEN CIRCLE \$25,000-\$49,999

An Anonymous Donor ☼
An Anonymous Foundation ☼
Paula & Steven Fasken ☼
Vada & Ted Stanley ☼
Starline Printing ♥
Eugene V. & Clare E. Thaw Charitable Trust ☼
Thornburg Investment Management ☼

SILVER CIRCLE \$10,000-\$24,999

Pamela & David Albin ☼
An Anonymous Donor ☼♥
APS Education Foundation ☼
Jean & John Berndt ☼
Daniel Burrell & Katherine Jetter Burrell ♥
Cardinal Health ☼
Dianne & Don Chalmers ☼♥
Don Chalmers Ford & Chalmers Capitol Ford Lincoln ☼♥
City of Santa Fe - Children & Youth Commission ☼
Suze & Larry Deitch
The Deitch Philanthropic Fund of the Jewish Community Foundation of the Jewish Federation of Greater Pittsburgh

Diane & Peter Doniger ☼♥
Susan & Ron Dubin ☼
Educational Foundation of America ☼
Jeana & Robert Efroymson
The Fasken Foundation ☼
First National Bank of Santa Fe ☼♥
Freeport-McMoRan Copper & Gold ☼
Garfield Street Foundation ☼♥
General Mills Foundation ☼
John Herklotz ☼♥
Innovate + Educate ♥
Leslie Nathanson Juris & Hervey A. Juris ☼♥
Kirtland Federal Credit Union
Klinger Constructors, LLC ☼♥
Los Alamos National Bank ☼♥
Barbara & Chuck Moore ☼♥
Nathanson/Juris Fund, Santa Fe Community Foundation
New Mexico Arts ☼
Windle B. Priem Fund
Donald T. Regan Foundation ☼
Susan & Windle Priem ☼
Rosemont Realty ♥
Rotary Club of Albuquerque
Sandia Foundation's Hugh & Helen Woodward Fund ☼
Santa Fe Community Foundation
Jodi & Robin Stumbo ♥
United Rentals ☼♥
United Way of Central New Mexico ☼
Vintage Albuquerque
Doris Goodwin Walbridge Foundation, Inc. ☼
Eileen Wells ☼♥

FOUNDERS' CIRCLE

IN-SCHOOL CLASS SPONSOR \$6,000-9,999

Bank of America Charitable Foundation, Inc.
Nancy & Cliff Blaugrund ☼♥
Century Bank ☼♥
Diane Fisher ☼♥
Gail & Jim Goodwin ☼♥
Medora & Jim Jennings ☼♥
Robin & Meade Martin ☼
Ingmarie & Tim McElvain ☼
Merrill Lynch
Beth & Steve Moise ☼♥
Cheryl & Gary Quinlan ☼
Carolyn B. Schmidt Charitable Foundation
Lyn Schmidt ☼
Sheila Fortune Foundation ☼
Target Store, ABQ NE ☼

INSTRUCTOR SPONSOR \$5,000-5,999

BlueCross BlueShield-New Mexico ☼
Julia B. Bowdich ☼♥
Jenne K. Britell, PhD ☼
Buckaroo Ball Foundation
Donna & John Goodwin ☼♥

Hancock Family Foundation ☼
Hestia Fund
Joe Horton & Michael McCafferty
Karin & Brian McMahon ☼♥
PNM Resources Foundation ☼
Ann Rutledge ☼
Louise Campbell-Tolber & Steven Tolber ☼♥
Wells Fargo Bank ☼♥
Woods Design Builders, Inc. ☼♥

ADVANCED TRAINING SPONSOR \$2,500-\$4,999

Linda & Carl Alongi ☼♥
Laurie Bauman Arnold & Steve Arnold ☼♥
Axxess Financial Group
Madalyn & James Baker ☼♥
Bank of Albuquerque ☼♥
BBVA Compass Foundation
Marcia & Ted Berridge ♥
John F. Bingaman
Christina Price & Connor Browne ☼♥
Buckman Family Fund, Santa Fe Community Foundation
Mr. & Mrs. Eugene M. Cheston, Jr. ☼
City of Santa Fe - Arts Commission ☼
Coca-Cola Bottling Co. of Santa Fe, Inc. ☼♥
Cynthia & Alan Coleman ☼♥
Shane Cronenweth ☼♥
Linley & Mike Daly ☼♥
Sande Deitch ♥
Marcie Brooks & John Delamater ☼
Alice & Greg Dunn ♥
Suzanne & Bill Ebel ☼♥
Bill & Elinor Fries ☼♥
Fidelity Investments ☼♥
Mark H. Gilman
Ingrid & Mark Gorham ☼♥
The DuBose & Dorothy Heyward Memorial Fund ☼
Barbara & Jerry Landgraf ☼♥
Life Center Foundation
Ann & Mark Livingston ♥
Lockheed Martin/Sandia National Laboratories ☼
Linda DiPaolo Love & Stephen Love ☼♥
Lovelace Health System ☼
Leigh Moiola & Charles Dale ☼♥
Moss Adams, LLP ☼♥
NM Bank & Trust ☼♥
Deb & Tom Novak ☼
Sheila & Ole Peloso ♥
Kathleen & John Pugh ♥
Rubin Katz Ahern Herdman & MacGillivray, P.A. ☼♥
Kathleen & Christopher Ryon ☼♥
Joyce & Ray Smith ☼
Roslyne Paige Stern & Robert D. Stern ☼♥
Cindy Aloï & Irwin Sugarman ☼♥
Jackie & Glenn Tilton ☼
US Bancorp Foundation ☼
Vein Center of New Mexico & Dr. Ole Peloso ♥

Mr. & Mrs. Theodore Williams ☼
Williams Family Charitable Trust

AFTER-SCHOOL SCHOLARSHIP SPONSOR \$1,500-2,499

Cris & Ken Abbott ☼♥
Kathy & Rick Abeles ☼♥
Aceves-London Family Fund of the Santa Fe Community Foundation ♥
Ann N. Aceves ☼♥
Joan Allen ☼
Charmay Allred ☼♥
Bank of the West ☼
Barker Management Company ☼
Julia Hosford Barnes & Will Barnes ☼
Anne H. Bass
Jolene & Steve Benoit ☼
Maggie Berg ♥
Susan & Lee Berk ♥
Suby Bowden Associates ☼
Dr. & Mrs. Curtis Brewer
Jane & Sandy Brickner ☼
Sanford & Jane Brickner Advised Fund of the Santa Fe Community Foundation ☼
Sally Corning & Ted Buchanan
Krys & Phil Custer ☼
Charles Dale ♥
Del Norte Credit Union ♥
Dion's Pizza - Peter Defries Corporation ☼♥
Enterprise Holdings ♥
Eye Associates of New Mexico ♥
Peaches & Eddie Gilbert ♥
Aaron & Betty Gilman Fund
Frank D. Gorham, Jr. & Marie K. Gorham Foundation ♥
Mark Naylor & Dale Gunn
William H. & Mattie Wattis Harris Foundation ☼
Helen Grevey & Jay Hertz ☼♥
Jean & Richard Higgins ☼♥
Gina Browning & Joe Illick ☼♥
Jewish Community Foundation of Greater Hartford
Anna Davis & Lewis Kaufman ♥
Greta & Tom Keleher ☼
Cynthia Sanchez & Kerry Lee ☼♥
Lumpkin Family Foundation ☼
Tara & Keith Maestas ♥
Luci Tapahonso & Robert Martin
Montgomery & Andrews ☼♥
Lynn Mullins ☼
New Mexico Mutual ☼♥
New Mexico Orthopaedics ♥
The Dan & Ashlyn Perry Foundation ♥
Nancy & Ed Pierce ☼
Miriam Rand & Ona Porter ☼
Robert & Sibylle Redford ♥
Elizabeth & Will* Rohrbach
Frauke & Keith Roth ☼
Nancy Ruggles ☼♥
Samuel Design Group ♥
Sandy & Bruce Seligman ☼
Shattuck St. Mary's ♥
Joie Singer ♥
Sotheby's International Realty Foundation ☼♥
Jennifer & Ed Street ♥
Anita Ogard & George Strickland ☼♥
The Cates Team at RBC Wealth Management ♥
Lynn & Craig Trojahn ☼♥
U.S. Trust - Bank of America ♥

Susann & Paul Weaver ☼♥
Helen Wertheim ☼
Amy & Jim Weyhrauch ♥
Carole Ely & Robert Wickham ☼♥
Wilcox Law Firm, P.C.
Valerie Plame Wilson & Joe Wilson ☼♥
Judy & Bob Worcester ☼♥
Richard M. Yates ☼

CHILD SPONSOR \$1,000-1,499

Alice & Paul Abbott ☼
Nancy Abruzzo
Albuquerque Community Foundation ☼
Gregg Antonsen ☼♥
Margo & Skip Atkins
Camille Barnett ☼
Dr. Dennis Batey ♥
Suzanna & Lawrence Becerra ☼
Diane & Joel Berger ☼
E. Blaugrund Family Fund, Albuquerque Community Foundation
Lee Blaugrund
Rod Boren
Rod Boren Family Fund at the Santa Fe Community Foundation ☼
Suby Bowden & Bob Gaylor ♥
Sarah & Doug Brown ☼
Jeanne & Gig Brummell ☼
Joseph Bryan, Jr.
Elaine & Wayne Chew ☼
Jo & Jerry Church ☼
Janis & Roy Coffee ☼
Michelle & Bill Coons ☼
Geri & Jim Cramer ☼
Scott Cummings ♥
Frances D'Alessio & Jason Saslow ♥
Susan & Conrad De Jong ☼
Susan & Conrad De Jong Fund, Santa Fe Community Foundation ☼
Cynthia Delgado & John Crant ☼♥
Lori & David Delgado ☼♥
Lynn McKelvey & Glenn Dickter ☼
Stephanie & Jim Dobbie ☼
Ocean & Randy Dry ☼♥
James H. Duncan, Jr.
Candy & Charles Easterling
Mary Ann & Mel Eaves
Jessica Eaves Matthews
Carolyn & Kurt Ehlert
Alicia Feil Peterson & J.C. Peterson
Sugiyama Kazukuni & David Frank
Sonya Priestly & Art Gardenswartz ☼
Carolina Girimonte ☼
Carol Prins & John Hart
John H. Hart Foundation
Michelle Holloway & Sandy Henry ♥
Kristin & Barry Hogge ☼
Hubbard Broadcasting/KOB-TV ☼
Kay Duke Ingalls & David Ingalls ☼
Michael B. Jeffers ☼
Margaret & Ted Jorgensen ☼
Mr. & Mrs. James W. Knapp
Knapp Family Philanthropic Fund
Fred & Camilla Kolber ☼
Louise Jaramillo & Paul Laudicina
Susan Conway & Robert Levy ☼
Tom Linton ☼

United States Representative Ben Ray Lujan ♥
Virginia & Edward Lujan ☼
Shirley MacLaine ☼♥
Andie & David Manzanares ☼
Millie & John McMahon ☼
Roxanna Meyers & Stanley Mount ☼
Mayo W. Miller ♥
Cynthia & David Montoya ☼
Julie & Phil Murray
John Nichols ☼
Pamela & Randall Onstead ☼
Robert R. & Kay M. Onstead Foundation ☼
Jeanne Parrella ☼
Jan Paulk ☼
Payday Inc. and Sylvana & Andy Siegel ☼
Deborah & Earl Potter
Presbyterian Healthcare Services ☼
Ardith Eicher & Dave Rashin ☼♥
Dr. & Mrs. Robert Reidy ☼
Ann Reinking
Sarah & Mark Ricciardi ☼
Sam's Club
Judy & Robert Sherman ☼
Helene Singer-Merrin ☼
Bindu & Chad Smelser ☼♥
Patty & Bill Snead ☼
Michael Bottrill & Sawyer Snowden
Southwest CARE Center
Karen & Paul Sowards ☼
Dr. & Mrs. Stanley Stark ☼
Chester French Stewart Endowment Fund, Albuquerque Community Foundation
Diana & Chester Stewart ☼
Carrie & Brian Terrell ☼
Mr. & Mrs. Charles W. N. Thompson, Jr. ☼
Mickey & Warren Thompson
Alicia & Peter Touche ☼
Undaunted Carnival Foundation
Margaret B. Veneklasen ☼
Violante & Rochford Interiors ☼♥
Wayne Vinson Walden
Mary Sloane & Andrew Wallerstein
Walmart #826
Walmart Store #873
Walmart #3423
Walmart Supercenter #2652
Walmart Supercenter #3428
Linda Waterman
Sasha Wilcoxon ♥
Sharon & Sheldon Wright ☼
Brenda Yates ☼

CIRCLE OF FRIENDS

FRIENDS FOR LIVE MUSIC \$500-999

Ace Metals, Inc.
Abinash Achrekar
Pam & Russ Alexanderson
An Anonymous Donor ☼♥
Russell Baker ☼
Gay & Stan Betzer ☼
Jessica & Joshua Carothers
Diane C. Choate ☼
CliftonLarsonAllen LLP ☼♥
Mary Ann Coates ☼
Carol & John Cochran
Sara & Alex Crecca
Crecca Law Firm

Angie & Larry Delgado ☺♥
 Dr. Gloria Donadello ☺
 Dr. Nancy Dubro ♥
 Espanola Walmart
 Supercenter #2656
 Paul Fish ☺♥
 Lisa Goodman ☺
 Brooke Gray ☺
 Griffin & Associates
 Dr. & Mrs. Karl Horn ☺♥
 Patricia & Edward Hymson ♥
 Nancy & Tony Jacobs ☺♥
 Colette Jury ♥
 LeeAnn Dunn & Michael Keehner ☺
 Janis & Steve Keene
 Jean Knapp ☺
 Dr. Paul Legant ☺
 Shana & Greg Levenson
 Hannah Loomis
 Shelly Lowman
 Ali MacGraw ☺
 Gwyn & Wilson Mason
 Tracey & Timothy Meisenheimer
 Terry & Wally Melendres ☺♥
 Kristy Ott Meyer & Kirk Meyer
 Alicia & Bill Miller
 Ann DeHart & Robert Milne
 Molina Healthcare
 Morgan Stanley Foundation
 Morgan Stanley Smith Barney
 Mountain States Constructors, Inc.
 The Nash Foundation
 New Mexico Dancewear ☺
 Katie Jebb Norton
 Donna & Charles Oglesby
 Wendy & George Powell ☺
 Roberta & Barry Ramo ☺
 Dr. & Mrs. Armin Rembe
 Deborah Dorman Rodriguez
 & James Rodriguez
 TriCore Reference Laboratories ☺♥
 Charles & JD Wellborn
 Patricia Dickinson & Larry Wells ☺♥
 Mary A. Wells

FRIENDS FOR COSTUMES \$300-499

Sandra Abruzzo
 Nancy Udell & Jim Atwood ♥
 Lisa & David Barker ♥
 Tana & Roy Bidwell ♥
 Kevin M. Bobolsky ♥
 Rachel O'Keefe & Steven Bohlin ♥
 Box-Studio, LLC and Kevin
 & Jennifer Box ♥
 Tooe & George Boyden
 Margaret & Turner Branch
 Suzanne Eisen Breslauer ☺
 Broderick, Phillippi, Wright
 & Comunas, LLC
 Carolyn & Robert Brumfield
 Kathy & Paul Bushnell ☺
 Loral Butler ☺
 Century Sign Builders
 Mr. & Mrs. David Chase ♥
 Albert Chavez
 Valerie & Woody Compton
 Q & Phil Cook ☺♥
 Caroline & Charles Coutret
 Molly & Lucas Covington ♥
 William Cowles ☺
 Mary & Michael Dalfonso ♥
 Michael D'Alfonso ☺♥

Norma Dallal ☺♥
 Pam & Dan Davis
 Betty Davis
 Peggy & J.R. Dotson
 Edo Spaces
 Kristina Alley & Tim Farrell ♥
 John Rochester & Larry Fodor ♥
 Holly Barnet-Sanchez
 & David Foster
 Peg & Charlie Galbraith
 Heather & Tim Gallegos
 Rebeca Gibrail
 George Pelletier & Jim Hailey ♥
 Dr. & Mrs. Hal Hankinson ♥
 Rebecca & Jason Harrington
 Heritage Home Healthcare
 Susie & C.T. Herman ♥
 Mr. & Mrs. Rusty Hiller
 Cynthia Helms & Scott Hoeft ♥
 Charles B. Hogge ♥
 Judy & Sam Honegger ♥
 Paul & LaDonna Hopkins
 Ani Hurwitz
 Betty Johnson
 Terry & Connie Johnson
 Michael Kelly ☺
 Dr. Al Lopez
 Commissioner Maggie
 Hart Stebbins
 Troy McNabb ♥
 Caroline & Tom Meade
 Judy & Lance Mikkelsen ♥
 Allen & Wendy Miner
 Susan Strome & Laurie Moodie ☺
 Kate & Robert Moss ♥
 Harold Folley & Jennie Negin
 Louis Pacias
 Marti Partridge
 Bernadette & James Ramsey
 Suegy & Randy Randall
 Julie & John Ransom
 Mr. & Mrs. Ogden Reid
 Todd Davis & Chris Richter ♥
 Anna & Joe Santangelo ☺
 Meryl & Ron Segel ☺
 Angelina Vera & Raphael Shapiro ☺♥
 Jason Sharpe
 Beth & Walter Simpson
 Mary Herring & Bob Stamm
 David Morris & Terry Sweeney ♥
 Mr. & Mrs. Lee Trussell
 Laura Fashing & Mark Unverzagt
 Tracy and Ann Utterback
 Arlene & Richard Vender ☺
 Kathy Walsh ♥
 Catherine & Steven Washburn
 Jacquelyn Wharton
 Karen Wolfe-Mattison ♥
 Sharon Woods

FRIENDS FOR HEALTHY SNACKS \$120-299

John L. Aab
 Judith & Bill Alger
 Bonnie Allard
 Shirley Anderson ☺
 Keri & Tom Antram
 Axel H. Baum
 Gregg & Lisa Bemis Fund, Santa
 Fe Community Foundation ☺
 Jeanne Bischoff
 Tony Bonanno ♥
 Patricia & Charley Brewer ♥
 Gail & Lee Bush

Pat Carli
 Lorraine Carlisle
 Candace Carreathers ☺
 Dr. John Caskey ♥
 MaryEllen Forte Collins ♥
 Laurie Farber-Condon
 & Michael Condon ♥
 John G. Connell
 Sharon & Dick Cooper ♥
 Mark Corey
 Carole & Phil Coviello Charitable
 Fund of Indian River Community
 Foundation
 Beverly Cramer ☺
 Melanie & Eliot Cutler ☺
 Nancy Wood & Jim Dines ☺
 Robin Dozier Otten
 Senator Tim Eichenberg ☺
 Dolores G. Espinosa
 De Ortega ☺
 Gail Evans
 Susan Feil
 Jane & Michael Flax
 Flying Star Cafe - Nob Hill
 Carol & Richard Follingstad
 Marilyn Foss ♥
 Nancy & Haines Gaffner
 Christen & George Garcia
 Sally Malave & Gary GIBLIN ☺
 Johnnie Gillespie
 Susan Gloyd ☺
 Golden Apple Foundation of NM
 Pamela J. Gooden
 Goodman Realty Group ☺♥
 Sarah Hayes ♥
 Terry Hendrix ♥
 Alan Fleischauer & Thomas
 Higley ☺
 Tania Jackson
 Lynn Johnson
 Dr. Sat-Kaur Khalsa ♥
 Lori Klinger
 Alyson Evans & Steve Kornacki
 Bebe Krimmer
 Bob & Nancy Lehrer
 Ann Galloway Leigh
 Robin Merlo & Michael
 Lescander ☺
 Rebecca Liggett
 Joe Lotz
 Diane & Tim MacAlpine ☺
 Mona Malec & Pierre Barrera ♥
 Carolyn Martin
 Susan Odiseos ☺♥
 Ruth & Henry Ortega ♥
 Sara Parent
 Jim Perner
 Angie & Steve Riemann
 RLR Resources
 Rock Gap Engineering
 Rosie Gonzalez & David Rogers ☺
 Monique Salazar
 Gary Sanchez
 Anne E. Schiffer
 Dr. & Mrs. Doug Schwartz
 Claudia & Ron Short ☺
 Eve & Fred Simon ☺
 Robin N. Smith & Dan O'Neill ♥
 Cecily Peterson & David Sokoloff ☺♥
 State of New Mexico - Children,
 Youth, & Family Department
 Dorothy Stermer & Stacy Sacco
 Camille Stevens

Duffy & Jean Ann Swan
 Concetta & Larry Trujillo ☺
 Vicki Turpen
 Sunny Tyrrell
 Socorro Varela
 Walter Burke Catering, Inc.
 Lorna & Bruce Wiggins ☺
 Gretchen & Shane Williams ☺♥
 Jan & Alan Wilson ☺
 Stephanie & David Wirt

FRIENDS FOR DANCE SHOES \$1-119

Accolades Advertising
 Jane Adams
 Mary Aguilar
 Albertsons ☺
 Daniela Alcala
 Elisha Amrijo
 Leslie Anderson
 APS Board of Education
 Kyla Aragon
 Amber Archer
 Lisa T. Arciniega
 Ann Arnold
 Laurence Barker
 Kelley N. Barnes ☺
 Susan Bernstein
 Carol Bever
 Beezy & Steve Bing ☺
 Gigi & Peter Birkeland
 Luz Blea
 Yolanda Blea
 Tory & Jon Bloodworth
 Francesca & Tom Blueher ☺
 Lindsey Bogard
 Jacqueline Boss ☺
 Rachel & Matthew Brackbill
 Henry Briggs
 Janis & Don Briggs
 Jackie Hall & J.D. Bullington ☺♥
 Susan Burke
 Susan & Russell Caffery
 Nora & Kit Caldwell
 Judith M. Campbell
 Casa De Rosa Assisted Living
 Georgia Catasca
 Veronica Celaya
 Caroline Chamales ☺♥
 Beverly Chavez ♥
 Christine C. Chavez
 Michell K. Chavez
 Rudy Chavez
 Catherine Lee Christie
 Christina R. Claude
 Clear Vision Multi Services
 Carol & Dexter Clark Coolidge ☺
 Alicia Cordova
 Kristy L. Cordova
 Martin Crawford
 Julie Criner
 Kelly & Tim Cunningham
 Audrey & Abel Davis ☺♥
 Jacy Davis
 Judy Dawson
 Susan DeFrancesco
 Carol K. Ducaj ☺
 Claire Ellen Dudley
 Aline Harris-Ellis & Terry Ellis
 Lisa & Delvin Ellison
 Emcore
 Susan Epstein
 Bryan Faber

Cheryl Feller
 Dolores M. Ferrel
 Celia Fiedler
 Briana Flores
 Elizabeth Frost
 Barbara Gabaldon
 Amy Gabaldon
 Amanda Gallagher
 Toni & Frank Gallegos ☺
 Lois A. Gallmeyer
 William L. Gannon
 Susan Ganzhorn
 Agnes Garcia
 Jessica L. Garcia
 Katrina Garcia
 Octaviano Garcia
 Sabrina Garcia
 Jose Garcia
 Judy & Tom Garner
 Bernice & Donald Gartner ♥
 GE Foundation ☺
 Jacquelyn Helin & Robert Glick ☺
 Haley Glover
 Nancy Goetz
 Sam & Mary Goldman ☺
 Sandra Goller
 Anthony D. Gonzales, D.D.S.
 Carrie Gregory
 Jane L. Griffin
 Lisa Grusy
 Althea R. Guist
 Mr. & Mrs. Pod Felipe Gutierrez
 Connie Hale
 Henrietta & Terry Hall ☺♥
 Katherine Hall
 Elia Haun
 Barbara Hays
 Lindsey Hemmert
 Jill & Scott Henderson
 Suann & Lyn Hendren
 Maria Hernandez
 Jeff Hiner
 Jean & Chris Hollowwa
 HUB International Insurance Services
 Dianna L. Hughes
 Aimee Hurley
 Charlene & Charles Hyle
 Joan Gallini & Bill Ivry
 Olivia Jaramillo ☺
 Jim Jennings, III
 Lisa Johnson
 Wayne A. Johnson
 Janice & Emmett Johnson
 Shawn Jones
 Bob Jones
 Barbara Kapela
 Senator Tim Keller
 David Kilpatrick
 Debbie & Patrick Kinsella
 Rebecca Kiracofe
 Shirley Morrison & Kase Klein ☺
 Claire Zoeller & Richard Klein ☺
 Jane Knap
 Karen Jane Knight
 Ande & Gene Kok
 Alan Konrad
 Jan Kovach
 Robert D. & Carol H. Krinsky ☺
 Alan Kulb
 Judith & Henry Lackner
 Christine Lacome
 Dr. Alice K. Ladas ☺
 Lakind Dental Group
 Monica Lara

John Larson
 Stephanie Lauer
 Karen & Jeffrey Lawrence
 Ginger Lazarus
 Le Paris French Bakery
 Joyce Lenz
 Nancy & James Leonard
 Elaine & Tim Leppert ♥
 Jacqueline & David Levine
 Gloria & Marvin Lieberman
 Meghan Lippert
 Nick Loftis
 Todd Lowry
 Tina Lucero
 Barbara MacFarlane
 Charles R. MacKay ♥
 Carolyn H. Manley
 Carolyn Martinez
 Jesse Martinez
 Patricia Martinez
 Carol Martinez
 Camille Massie
 Judy & Paul Matteucci
 Kathy & Jack McCarthy
 Laurel McCloskey
 Margaret McGuinn
 Sara McIntyre ☺
 Jennifer & Brian Miller ☺
 Ellen & Roger Miller ☺
 Judy & Howard Mock ☺
 Denise & Bob Moedl
 Mary Montano
 Claudia Monteiro & Blaire Bennett ♥
 Adolfo Montoya
 Shelley Roberts & Dewey Moore ☺
 Patricia Moore
 Jim Moore
 Jennifer R. Mora
 Danielle Morales
 Patty Morris & James
 McGrath Morris
 Daniel & Bianca Genco Morrison
 Lora Morton
 Sarah Kotchian & Robert Nellums
 Carissa & Tom Nichols ☺
 Jennifer & Albert Noyer
 Lionel Nunnery
 Candace N. O'Hearn
 Jackie Oliver
 Frances M. Otto ☺
 Richard Parker
 Daniel Pearlman
 Antonio Pedroncelli
 Alexander Pennington, Jr.
 Carol Perea
 Angelica M. Perraglio-Garcia
 Alicia Peterson
 Gwen & Don Peterson
 Maria Higuera Pope &
 Stephen Pope
 Woody & Bill Puretz
 Dina M. Rabanal
 Maria Rivera Ramirez ☺
 Celimar Reines ☺
 Beverly Richardson
 Liz Ritchie
 Michelle Ritter
 Tracy Ritter
 Andrea Rodriguez
 Elizabeth Roghair
 Elizabeth Romero
 Kimberly Romero
 Juliana & Henry Rothschild
 Maria Griego-Raby &
 Randy Royster
 Dolores & David M. Sala
 Sala & Associates

Molly Samore
Alyx Sanchez
Gilbert Sanchez
Geri Saunders
Ginny & Alex Selvin
Lucille Serrano
Edna Sewill
Ann Sewill
Dianne & Ed Shinholser
Teresa Silva
Patricia & George Simon
Carol Skiba
Rod Skiver
Georgia Smith & Marion Lee ☼
Georgia & Jim Snead
Sandra Spak Schafer
April & Corey Spaulding
Rebecca & David Steele
Aaron M. Stokes
Suzanne Stone
Diane Stoner
Amy Sweet
Susan & Larry Tackman
Gabriella M. Tafoya-Torrez
Jacque Tamez
Camille Canzone & Ron Tarrson
Christine Marin Taylor
Toni Temple-Lipton
Kelly Smyer & Bruce Thompson
Michael & Cean Thompson
Deborah Thompson
Maryann A. Tofoya
Chris Torres
Guadalupe Trevizo
Martha Triviso
Gary D. Trujillo
Karen Trujillo-Tsoodle
Brooke H. Tuthill ☼
Tux Window Cleaning
Rachel Velarde
June & Lewis Vermillion
Sharon Vigil
Peggy Vigil
Stephanie Vonderhaar
Wagner Power Systems
Donna Wahl
Colleen Walls
Sandi Wegner
Susan Feiner & Peter Whitman ☼
Christine & David Williams ♥
Marilyn H. Wilmerding
Marilyn & Ed Winter-Tamkin
Cynthia & Sam Wolpert ♥
Marilyn Worthington ☼
Maureen Brooks & Peter Wurzburger ♥
Juan Carlos Zavala
Ellen Zieselman ☼
Shauna Zunie

IN KIND

315 Restaurant and Wine Bar ♥
66 Diner ☼
Cris & Ken Abbott ☼
The Albuquerque Film & Media Experience
ABQ Trolley Co.
Achievement Gallery
Albuquerque Isotopes
Albuquerque Journal ♥
The Albuquerque Museum of Art and History
Alcon Entertainment ♥
Linda & Carl Alongi ☼♥
Andiamo ☼♥
Art Enhancements
Artichoke Cafe ☼
Artichokes & Pomegranates

Aspen Masonry - Jim Griffin ☼
Azur
Joseph Badal ☼
Suzanne Barker Kalangis ♥
The Barley Room
Tripp Bassett – Barn on the Pond ☼
Adrienne Bellis
Betty's Bath & Day Spa
Sheila & Norton Bicol
Bishop's Lodge Ranch Resort & Spa ♥
Darci Blaschke
Blue Rain Gallery
Bookworks
Bouche Bistro ♥
John Boyle
Jane Bradley
Buena Foods
C. G. Higgins Confections ♥
Cafe Pasqual's
Casa Verde Spa ☼
Cashmere Rouge Spa ☼
Chaparral Electric Co., Inc.
Charlie's Sporting Goods
Arturo Chavez
Chimayo Trading & Mercantile
Chocolate Cartel
City Treats Parties ☼
Classic Party Rentals
Clear Channel Outdoor ☼
Coca Cola Bottling Co.
Coca-Cola Bottling Co. of Santa Fe, Inc. ☼♥
Comcast ☼
Cost Plus World Market
Costco
Coyote Café ☼
Cumbres Suites
Defined Fitness
Dion's Pizza - Peter Defries Corporation ☼♥
Elephant Bar
Elsa Ross Nob Hill ☼
The Estée Lauder Companies ☼♥
Exhibit Solutions of NM
EXHIB-IT ☼
Four Seasons Resort Rancho
Freeport-McMoRan Copper and Gold
Encantado Santa Fe ☼♥
Frostburg Dance Academy
Galisteo Bistro ♥
Gamers Anonymous
General Mills ☼
Geronimo
Gertrude Zachary
Ingrid Gorham ☼♥
The Grove Cafe and Market
The Haltom Family ☼
Sue Hamilton
Herrera Coaches
Hewlett Packard Albuquerque
Hilton Santa Fe Golf Resort & Spa at Buffalo Thunder
Hinkle Family Fun Center ☼
Diane Hinte
Hotel Andaluz ☼
Hotel Parq Central ☼
Hotel Santa Fe ☼
Hyatt Regency Tamaya ☼
Medora & Jim Jennings ☼
JENNiRADIO, Jennifer Smart Foundation
Jinja Santa Fe
Joe's Dining
Amber Jordan ☼
Ronna Kalish
Christine Karl
Paul Krycho
KSFR, Northern NM
Radio Foundation ♥

NDI NEW MEXICO

La Boca
La Montanita Co-op ☼
La Posada de Santa Fe
La Provence Brasserie Restaurant
Los Alamos Ski Club ☼
Los Pinos Fly & Tackle Shop
Los Poblanos Inn & Cultural Center ☼♥
Love Frozen Yogurt Bar
Melissa Boyle Mahle
Marcello's Chophouse ☼
Mid-Region Council of Governments
Marcia A. Miller
Mist Skin Care ☼
Judy & Howard Mock ☼
Susan Strome & Laurie Moodie
Jack Morris
Nambe
National Distributing Company
New Mexico Dancewear ☼
New Mexico Manufacturing Extension Partnership
NM Business First ☼
Nothing Bundt Cakes
Olo Yogurt Studio
Lanny and Jill Olson & the Holiday Inn Express
Karen Ortega
Anne Ortiz
Peas 'N' Pod Catering
Peichi Ng ☼
Loan & Man Phan ☼
Photo Booth Rentals of New Mexico ♥
Picaflor Day Spa
Popejoy Hall Center for the Arts UNM
Quickbeam Systems, Inc.
Teresa & Matt Rembe
Ristra
River Terrace Inn
Bill & Karon Roberts ☼
Sagebrush Inn
Santa Fe Bar & Grill
The Santa Fe Opera ☼
Santacafe ♥
Scalo Northern Italian Grill
Allan Shedlin
Mr. & Mrs. Joseph Shepard
Shibumi Ramenya
Skarsgard Farms
Slice Parlor
Bill & Patty Snead ☼♥
Southwest Airlines ♥
Southwest Brands
Starline Printing ♥
Stixon Labels
Studio Southwest Architects
Laura Sullivan
Jono Tew ☼
The Links Arts FACET ♥
The Lodge at Chama
Thornburg Charitable Foundation
Thornburg Investment Management ☼♥
Tomasita's ☼
Trattoria Nostrani
Tree House Pastry Shop & Café
M. Lollie Ulibarri
Water Man
Krysteen Waszak ☼
Wells Fargo Bank of New Mexico ☼♥
Maria & William Wolfe ☼
Wolf Creek Ski Area ☼
Janelle & Mark Yuska
Lori & Xavier Zamarripa

10 Year Donors

Thank you so much to loyal donors who have supported NDI New Mexico for a total of 10 years! This year we gratefully welcome John Herklotz, Beth & Steve Moise, NM Bank & Trust, and Woods Design Builders to this group. List Compiled March 20, 2013.

Rick & Kathy Abeles
AM & Paul Abbott
Ann Aceves
Albertsons
Pamela & David Albin
Hope Aldrich & Michael Jeffers
Charmay Allred
Anonymous
Peggy & David Ater
Joseph & Sara Badal
Julia Hosford Barnes & Will Barnes
Lisa & Gregg Bemis
Jean & John Berndt
Gay & Stan Betzer
Blanchette Hooker
Rockefeller Fund
Blaugrund Family
Sarah & Doug Brown
Richard Carlson & Tish Butler
Louise Campbell-Tolber & Steve Tolber
Century Bank
Dianne & Don Chalmers
Janis & Roy Coffee
Q & Phil Cook
Kay & Michael Coughlin
Dr. & Mrs. George A. Cowan*
William Cowles
Shane Croneweth
Krys & Philip Custer
Michael D'Alfonso
Andrew & Sydney Davis
Cynthia Delgado & John Crant
Larry & Angie Delgado
Valerie T. & Charles Diker

Susan & Ron Dubin
Carol K. Ducaj
Educational Foundation of America
Barbara Ettinger & Sven Huseby
First National Bank of Santa Fe
Freeport McMoRan Copper & Gold
Elinor & William Fries
Garfield Street Foundation
David Gershenson
Gary Goodman
Lainie & Malcolm Grimmer
Claire R. Grossman
DuBose & Dorothy Heyward Memorial Fund
Anne & Rod Honstein
Wade Hover
Rosalyn Hurley
Ani Hurwitz
David K. & Kay Duke Ingalls
Medora & Jim Jennings
Cindy & Ken Johns
Joseph L. Fisher Foundation/
Storper Family Foundation
Leslie Nathanson Juris & Hervey A. Juris
Suzanne & Ike Kalangis
Klinger Constructors, LLC
Jean Knapp
Jim & Judi Knapp
Robert D. & Carol H. Krinsky
Stefan Lark
Margot & Robert Linton
Tom Linton
Linda DiPaolo Love & Stephen Love
Carl & Gloria Luff
Ali MacGraw
McCune Charitable Foundation
Tim & Ingmarie McElvain
Sarah McIntyre
Brian & Karin McMahon
Ellen & Roger Miller
Dewey Moore & Shelley Roberts
Marjorie & David Morehead
Patricia & Richard Morris
Fran & Carol Mullin

Arlyn & Fred Nathan
National Endowment for the Arts
New Mexico Arts, a division of the Department of Cultural Affairs
Anita Ogard & George Strickland
Catherine Oppenheimer
Dolores Ortiz
Jan Paulk
Nancy & Ed Pierce
Anne & Joseph L. Ponce
Deborah & Earl Potter
Barry & Roberta Ramo
Roxana & Ogden Reid
Kathy & Robert Reidy
Regina Richdale
Charles & Mara Robinson
Frauke & Keith Roth
Jack* & Donna Rust
Ann Rutledge
Cynthia Sanchez & Kerry Lee
Sandia National Laboratories
Lockheed Martin
City of Santa Fe Arts Commission
Seidman Family Foundation
Fred & Eve Simon
Robin N. Smith
Bill & Patty Snead
Barbara Somerfield & John Guffey
Ted & Vada Stanley
Roslyne Paige & Robert D. Stern
Suzanne Stone
Louise Taichert
Thaw Charitable Trust
Charles & Leslie Thompson
Sherry Thompson & David Miller
Garrett Thornburg
John Tishman
United Way of Central New Mexico
City of Albuquerque Urban Enhancement Trust Fund
Eileen Wells
Jim & Amy Weyhrauch
Carole Ely & Robert Wickham
Theodore & Dora Williams
Jan & Alan Wilson

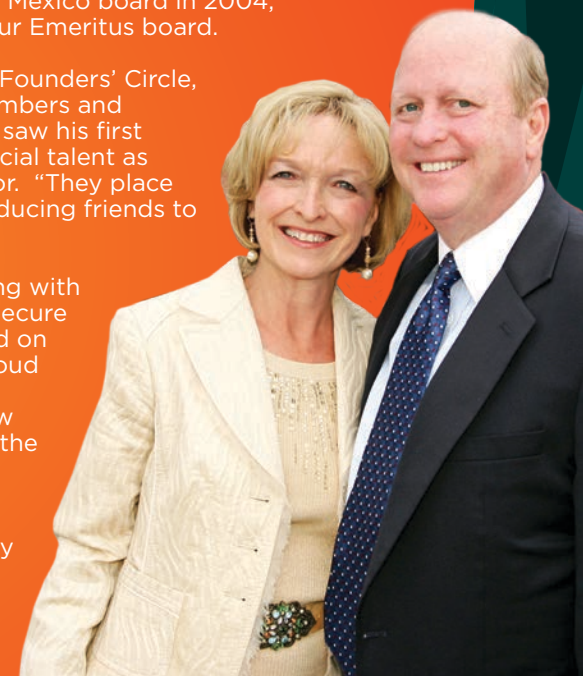
SPOTLIGHT ON DIANNE & DON CHALMERS

Getting involved with NDI New Mexico was a natural fit for Dianne Chalmers. As a former first grade teacher, Dianne has a heart for children and focuses her efforts on helping them gain the skills needed to succeed in life. Dianne joined the NDI New Mexico board in 2004, and served for nearly a decade. She is now a devoted member of our Emeritus board.

During her tenure, Dianne transformed our donor circles, especially Founders' Circle, turning it into a giving club that now boasts over 200 individual members and raises important sustaining funding for NDI New Mexico. Once Don saw his first End-Of-Year event, he was hooked too. "Dianne and Don have a special talent as connectors," says Russell Baker, NDI New Mexico's Executive Director. "They place tremendous value on giving back, and they take great pride in introducing friends to causes close to their heart."

Dianne and Don are co-chairing the Campaign for Albuquerque along with Catherine Oppenheimer and Garrett Thornburg. A capital effort to secure the funding needed to completely renovate and revitalize The Hiland on old Route 66. "Seeing so much progress at The Hiland makes us proud and we're thrilled even more families have access to NDI's amazing programs," says Dianne. "It's all about the children - Don and I know how much NDI does to get them excited about school, and we love the way the dancing gets them healthier, too."

We thank Don and Dianne for their tremendous example of philanthropy in giving their time, providing expertise, and generously supporting NDI New Mexico's dreams and aspirations. We consider them heroes for the children of New Mexico. ■



In Honor Of & Memory Of

- In honor of Charmay Allred by Beezy & Steve Bing
- In celebration of Ari Aponte by Camille Massie
- In honor of Russell Baker by Leslie Nathanson Juris & Hervey A. Juris and Valerie T. & Charles Diker
- In honor of Robin Bennett by Valerie T. & Charles Diker
- In honor of Evan Bloodworth by Tory & Jon Bloodworth
- In honor of Annabelle Briggs by Henry Briggs
- In honor of Melissa Briggs by Eleanor Briggs
- In honor of Herb Campbell by Nancy & Cliff Blaugrund
- In honor of Roy & Janis Coffee by Valerie T. & Charles Diker
- In honor of Michael D'Alfonso by Marilyn & Ed Winter-Tamkin
- In honor of Jesse Dickter by Ellen Zieselman
- In honor of Diane Doniger by Claudia Monteiro & Blaire Bennett, Lainie & Mac Grimmer, Sara Parent, Ardith Eicher & Dave Rashin, and Ginny & Alex Selvin
- In honor of Peyton & Taylor Ellis by Aline Harris-Ellis & Terry Ellis
- In honor of Mr. & Mrs. Don Fineberg by Ani Hurwitz
- In honor of Juli Gallini-Ivry by Joan Gallini and Bill Ivry
- In honor of Cole Gartner by Jenniphr Goodman & Eric Pope
- In honor of Mac & Lainie Grimmer by Gigi & Peter Birkeland and Jacqueline Boss
- In honor of Jordan Jameson-Rogers by Howard Rogers
- In honor of Medora Jennings by Sharon & Dick Cooper and Dr. & Mrs. Karl Horn
- In honor of Fiona Jenson-Hitch by Joyce Lenz
- In honor of Leslie Nathanson Juris & Hervey A. Juris by Pam & Dan Davis
- In honor of Pamela Ladas by Dr. Alice K. Ladas
- In honor of Tom Linton by Valerie T. & Charles Diker
- In honor of Linda DiPaolo Love by Linda Waterman
- In honor of Emily Lowman by Mr. & Mrs. Daniel Haughey and Kaleen J. Blosser
- In honor of Max Manzanares by Andie & David Manzanares
- In honor of Aase Martinez by Adolfo Montoya
- In honor of Griffith & Schel Mason by Gwyn & Wilson Mason
- In honor of Susan Meredith by Valerie T. & Charles Diker
- In honor of Erika Novich by Kimberly Romero
- In honor of Jackie Oliver by Mary Montano
- In honor of Catherine Oppenheimer & Garrett Thornburg by Jacquelyn Helin & Robert Glick and Lori Klinger
- In celebration of Tiana Paras by Christina R. Claude
- In honor of Sydney Pope by Jenniphr Goodman & Eric Pope
- In celebration of Sierra Rios by Lisa Johnson
- In honor of Frauke & Keith Roth by James H. Duncan, Jr.
- In honor of Jasper Shorty by Amber Archer
- In honor of Michael Wade Simpson by Camille Barnett
- In honor of Roslyne Paige Stern by Robert D. Stern
- In honor of William & Elliott Thornburg by Catherine Oppenheimer
- In celebration of Bella Vigil by Madalyn Barfield and Maureen Naranjo
- In honor of Shane Woods by Sharon Woods
- In memory of Marie 'Yei' Gorham by Nancy & Cliff Blaugrund
- In memory of Ada Hanrahan by Susan DeFrancesco
- In memory of Carol N. Kinney by Shelley Roberts & Dewey Moore
- In memory of David Mark Lowman by Shelly Lowman
- In memory of Ellen Pearlman by Catherine Lee Christie, Celia Fiedler, Ginger Lazarus, Jacqueline & David Levine, Rebecca Liggett & Friends at Children, Youth & Family Department, Ingmarie & Tim McElvain, Daniel Pearlman, Alexander Pennington, Jr., and Woody & Bill Poretz
- In memory of Frank & Mickey Peloso by Antoinette Peloso
- In memory of Jack Rust by Linda and Carl Alongi, Nancy & Cliff Blaugrund, Medora & Jim Jennings, Leslie Nathanson Juris & Hervey A. Juris, Debbie & Patrick Kinsella, Shirley Morrison & Kase Klein, Judy & Howard Mock, Mountain States Constructors, Inc., and Ann Blaugrund & William Redak
- In memory of Robby Shweder by Susan Burke
- In memory of Esther Strong by Millie & John McMahon
- In memory of Grace Elizabeth Vender by Arlene & Richard Vender
- In memory of Sandra Weber by Roslyne Paige Stern & Robert D. Stern

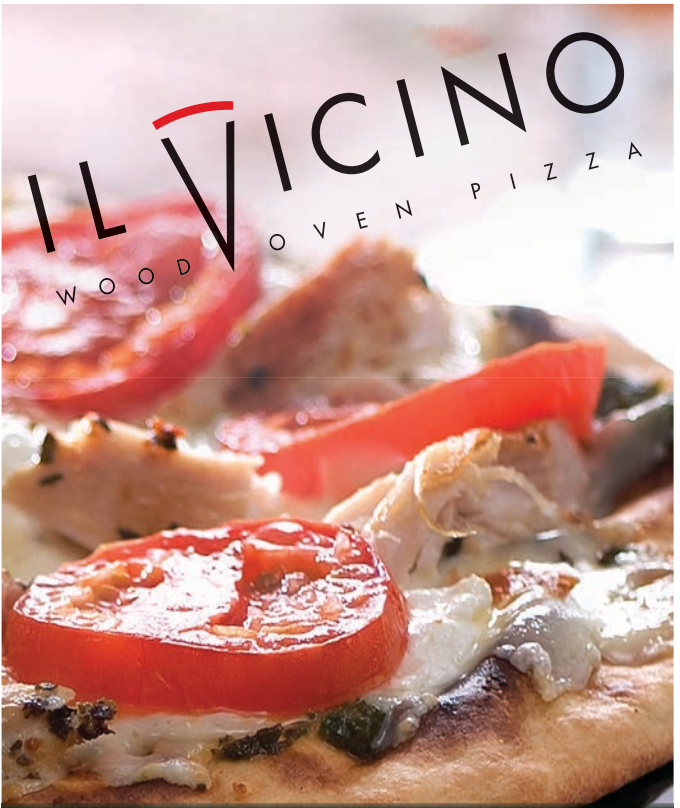


Jinja
bar & bistro

Dance your way in...

Welcome to Jinja Bar and Bistro,
Casual Dining with a Touch of the Tropics!
We Look Forward to Seeing You and Becoming
Your Favorite Neighborhood Restaurant.

Santa Fe 505.982.4321	ABQ NE Heights 505.856.1413	ABQ Westside 505.792.8776
---------------------------------	---------------------------------------	-------------------------------------



IL VICINO
WOOD OVEN PIZZA

3403 Central NE / 266-7855
10701 Coors Blvd. NW / 899-7500 • 11225 Montgomery NE / 271-0882
321 West San Francisco (Santa Fe) / 986-8700



RIO GRANDE SCHOOL

A Solid Foundation That Lasts a Lifetime

- Integration of Technology, Science, Music, Art, Drama, PE, Experiential Education, and Spanish
- Promotion of community responsibility through the Buddy Program, Environmental Stewardship, and Service Learning
- Full day academic program for early childhood (ages 3 – Kindergarten)

Financial aid available

- Student - teacher ratio is 9:1
- 75% of teachers have master's degrees
- Before and aftercare available
- 5-acre campus

505.983.1621
715 Camino Cabra • Santa Fe, New Mexico 87505
barbara_bentree@riograndeschool.org

Rio Grande School does not discriminate on the basis of race, color, gender, sexual orientation, gender identity, or national or ethnic origin.

RIO GRANDE SCHOOL
CHALLENGING, INSPIRING, AND NURTURING CHILDREN SINCE 1978
RIOGRANDESCHOOL.ORG AGE 3 - GRADE 6

PROUD MEMBER
National Association of Independent Schools
Independent Schools Association of the Southwest **ISAS**



Creative Homebuyers, Inc.

Quality Affordable Housing Since 1999

Thank You NDI for Leading Children
in The Ways of Excellence!



Work Hard. Do Your Best. Never Give Up.



Six one week sessions: June 10 – July 19

**A Summer Camp
of Living Arts & Culture
for ages 5 – 11**

Dance, Music, Story and Healing
Arts of Ethiopia, Nigeria, New
Mexico, Korea and the Maori
of New Zealand. Urban Culture
Week: Breakdancing & Graffiti
Art. NEW: Camping Week!

Healing Arts

Cultural Experiences

Perma-culture

Intuitive Development

Yoga

T'ai chi



Contact us at 795-9079 or goldenacornscamp@gmail.com
www.goldenacornscamp.org



The Joan Duffy Chapter
Santa Fe, New Mexico
(505) 715-6844
info@vfp-santafe.org
www.vfp-santafe.org

Veterans for Peace
applauds and supports
NDI in hopes that it
may spread love, hope,
joy, health and PEACE
through dance.



COME TASTE OUR PAELLA,
A GLASS OF SANGRIA
& ENJOY OUR FLAMENCO SHOW



4200 Central Ave SE
(Six blocks West of NDI New Mexico)

(505) 232-0535

www.cosmotapas.com

Thank you

GALA & SPECIAL EVENT SPONSORS

Listed are contributors through March 25, 2013. Every effort has been made to present a complete and accurate list. We apologize for any errors or omissions and invite corrections.

★ Indicates a contribution to NDI New Mexico's annual campaign.

♥ Indicates a renewed Gala gift for three years or more.

Albuquerque Gala

IMPRESARIO

Thornburg Investment
Management ★♥

PRODUCER

Valerie T. & Charles Diker ★♥

VIRTUOSO

Los Alamos National Bank ♥

ADVANCED TRAINING

First National Bank of
Santa Fe ★♥

AFTER-SCHOOL AT THE HILAND

Don Chalmers Ford & Chalmers
Capitol Ford Lincoln ★♥
Rosemont Realty

LIMELIGHT

Fidelity Investments ★♥
Moss Adams, LLP ♥

HEALTHY KIDS

Century Bank ♥
Wells Fargo ♥

SUMMER INSTITUTE AT THE HILAND

John & Donna Goodwin ★♥
The Vein Center of New Mexico

SPONSOR-A-CHILD

The Cates Team at RBC
Wealth Management
Krys & Phil Custer
Dion's Pizza - Peter Defries
Corporation ★♥
Enterprise Holdings
Ethocon Endo-Surgery ♥
Eye Associates of New Mexico
Garcia Infiniti
Klinger Constructors LLC ★♥
New Mexico Mutual ♥
New Mexico Orthopaedics
Jeanne Parrella
Poms & Associates
Target ★

ANGEL TICKETS

Chavez-Grieves Consulting
Engineers, Inc.
CliftonLarsonAllen LLP
DeAnza Developer LLC -
Rob Dickson ★
Diane Fisher ★
Dawson & Stacy Hedges ♥
Medora & Jim Jennings ★♥
Dr. Andrew & Kathleen Metzger
Bruce & Kelly Smyer ★

Marilyn & Stanley Stark ★
TriCore Reference Laboratories
Craig & Lynn Trojahn ★

TABLE SPONSORS

Nancy Abruzzo
Carl & Linda Alongi ★♥
Julia B. Bowdich ★♥
Diane Fisher ★
Mark & Ingrid Gorham ♥
Ed & Jennifer Street
Steven Tolber & Louise
Campbell-Tolber ★♥
Bank of Albuquerque /
Paul & Susann Weaver
The Vein Center of New Mexico
Southwest Oral & Maxillofacial
Surgery / Wai Pong & Peichi Ng

MEDIA PARTNERS

99.5 Magic FM
Albuquerque Journal
Comcast ★
Starline Printing ★

GALA SUPPORTERS

Bill & Suzanne Ebel ★
Elaine & Frederick Fiber
Gail & Jim Goodwin ★
Luci Tapahanso & Robert Martin ★
Chuck & Barbara Moore ♥
Ole & Sheila Peloso

SPECIAL SUPPORT & IN-KIND DONORS

Aspen Masonry - Jim Griffin
The Albuquerque Film &
Media Experience
Linda & Carl Alongi ★♥
Artichoke Café
Joseph Badal

Tripp Bassett - Barn on the Pond
The Bishop's Lodge Ranch
Resort & Spa
Coyote Cafe
Dion's Pizza - Peter Defries
Corporation ★♥
Elsa Ross Nob Hill
The Estée Lauder
Companies, Inc. ♥
Ingrid Gorham ♥
The Haltom Family
Hotel Andaluz
Hotel Parq Central
Hyatt Regency Tamaya
Amber Jordan
Los Poblanos Inn &
Cultural Center ★
Mist Skin Care
Loan & Man Phan
Photo Booth Rentals of
New Mexico
Bill & Karon Roberts
Sandia BMW
The Santa Fe Opera
Bill & Patty Snead ★♥
The Springs Resort & Spa
Southwest Airlines
Jono Tew
Thornburg Charitable
Foundation
Tomasita's
Krysteen Waszak
Wolf Creek Ski Area
Peichi Wu

Santa Fe Gala

IMPRESARIO

Thornburg Investment
Management ★♥

PRODUCER

Valerie T. & Charles Diker ★♥

DIRECTOR

John Herklotz ♥
Innovate + Educate
Los Alamos National Bank ♥
Rosemont Realty
United Rentals ♥

CHOREOGRAPHER

Century Bank ♥
Don Chalmers Ford &
Chalmers Capitol Ford
Lincoln ★♥

First National Bank of
Santa Fe ♥

CONDUCTOR

Madalyn & James Baker ♥
Coca-Cola Bottling Co.
of Santa Fe, Inc. ♥
Sotheby's International Realty
Foundation & Shane
Cronenweth ★♥

DESIGNER

New Mexico Bank & Trust ♥
Rubin Katz Ahern Herdman
& MacGillivray, P.A. ♥
Wells Fargo ♥
Woods Design Builders, Inc. ★♥

ENTERTAINER

Kathy & Rick Abeles ★♥
Ann N. Aceves ♥
Cynthia & Alan Coleman ★♥
Del Norte Credit Union ♥
Medora & Jim Jennings ★♥
Klinger Constructors, LLC ★♥
Linda DiPaolo Love &
Stephen Love ★♥
Samuel Design Group
Eileen Wells ★♥

TABLE SPONSORS

Charmay Allred &
Eileen Wells ★♥
Marcia & Ted Berridge
Sande Deitch ★
Diane & Peter Doniger ★♥
Bill & Elinor Fries ★♥
Beth & Steve Moise ★♥
Barbara & Chuck Moore ★♥
Robert & Sibylle Redford
Shattuck St. Mary's
The Dan & Ashlyn Perry
Foundation
Woods Design Builders, Inc. ★♥

MEDIA PARTNERS

Comcast ★♥
KSFR, 101.1 FM

GALA SUPPORTERS

Cord Martin & Thom Armistead
Gail & Jim Goodwin ★♥
Ruthie Koval
Tricia Rosenberg
Marian & Jules Shapiro

GALA GIFT UNDERWRITER

C. G. Higgins Confections

SPECIAL SUPPORT & IN-KIND GIFTS

315 Restaurant and Wine Bar
Alcon Entertainment
Andiamo ★
Bishop's Lodge Ranch
Resort & Spa
Bouche Bistro
Café Café
Classic Party Rentals ★
Coca-Cola Bottling Co. of
Santa Fe, Inc. ♥
Galisteo Bistro
Geronimo ♥
La Posada of Santa Fe
Los Poblanos Inn &
Cultural Center
Lumenaria Lumenscapes
The Dan & Ashlyn Perry
Foundation
Lisa Samuel
Santacafé
Santa Fe Audio Visual
Santa Fe BMW
Shibumi
Soulstice / Absolute
Entertainment
Susan's Fine Wine & Spirits
Terra at Four Seasons Resort
Rancho Encantado Santa Fe
Vivre
Walter Burke Catering



ALBUQUERQUE GALA COMMITTEE

Ingrid Gorham, *Co-Chair*
Peichi Wu, *Co-Chair*
Sarah Ricciardi, *Honorary Chair*
Nancy Abruzzo
Joan Allen
Linda Alongi
Tooey Boyden
Kristy Cothorn
Krys Custer
Ashley Garcia

Kimberly Haltom
Jim Manning
Katherine McShane
Chris Morrison
Nancy Ruggles
Beth Urrea
Sherri Wells
Nancy Blaugrund, *Ex Officio*
Louise Campbell-
Tolber, *Ex Officio*

SANTA FE GALA COMMITTEE

Linda DiPaolo Love, *Chair*
Jodi Stumbo, *Vice-Chair*
Kim Blincoe
Shane Cronenweth
Valerie T. Diker
Diane Doniger
Stefan Lark

Ann Livingston
Andie Manzanares
Mayo Miller
Lisa Samuel
Kathy Walsh
Shane Woods



Thank you

VOLUNTEER LEADERSHIP

In addition to our Board of Directors and Events Committee members, NDI New Mexico is lucky to have many wonderful volunteers who give generously of their time, talent, and energy. Here we also wish to honor the committees that include volunteers who are not members of the NDI New Mexico Board of Directors. Thank you all!

- * **Pam Alexanderson**, Albuquerque Individual Giving Committee
- * **Dara Ambriz**, Albuquerque Individual Giving Committee
- * **Deanna Archuleta**, Public Funding Committee
- * **David Ater**, Hiland Building Committee
- * **Jason Brady**, Investment Committee
- * **John Burnham**, Investment Committee
- * **Kristy Cothern**, Corporate Giving Committee
- * **Larry Delgado**, Public Funding Committee
- * **Jim Dobbie**, Hiland Building Committee
- * **Diane Fisher**, Albuquerque Individual Giving Committee
- * **Gary Goodman**, Hiland Building Committee
- * **Robert "Bob" Goodman**, Hiland Building Committee
- * **Laura Hall**, Albuquerque Individual Giving Committee
- * **Vic Jury**, Hiland Building Committee
- * **Suzanne Barker Kalangis**, Hiland Building Committee
- * **Nancy King**, Public Funding Committee
- * **Leean Kravitz**, Campaign for Albuquerque
- * **Brent Moore**, Public Funding Committee
- * **Alex Motola**, Investment Committee
- * **Stanley Mount**, Hiland Building Committee
- * **Tom Novak**, Campaign for Albuquerque
- * **Dea Rankin**, Campaign for Albuquerque
- * **Jennifer Street**, Corporate Giving Committee
- * **Sunny Tyrrell**, Campaign for Albuquerque
- * **Sherri Wells**, Corporate Giving Committee
- * **Sharon Wright**, Albuquerque Individual Giving Committee



NDI NEW MEXICO

MADDOX
REAL ESTATE
commercial residential investment

life's sunny here
find your spot

MADDOX & CO. REALTORS® | maddoxrealtors.com | 505-764-0400
MADDOX MANAGEMENT, LLC | maddoxmgmt.com | 505-242-0989

1976

ESTÉE LAUDER COMPANIES

Thank you for your
generous donation to
NDI New Mexico



*We can't imagine
what life would be
without music and song,
dance and drama.*



La Vida Llena

Albuquerque's Only LifeCare
Retirement Community

**Live Well. Live Now.
Live Smart. Live Here.**

La Vida Llena residents are proud to be
supporters and audience members.
To schedule a personal presentation,
call (505) 293-4001.

*La Vida Llena, a leader for 30 years
in New Mexico senior living,
is part of Haverland Carter Lifestyle Group.*

TEACHING CHILDREN EXCELLENCE

Thank you

CORPORATE PARTNERS

Generous gifts from local businesses and corporate foundations support core programs, expanded outreach and a commitment to organizational excellence.

315 Restaurant and Wine Bar
66 Diner
ABQ Trolley Co.
Access Technologies
Accolades Advertising
Ace Metals, Inc.
Achievement Gallery
Albertsons
Albuquerque Academy
The Albuquerque Film & Media Experience
Albuquerque Journal
Albuquerque Isotopes
Alcon Entertainment
All In the Wrist Auto Repair
Alliance Glass & Mirror
Alpine Sports
Amanda's Flowers
Andiamo!
Art Enhancements
Artichoke Cafe
Artichokes and Pomegranates
Asian Adobe
Asian Restaurant
Aspen Masonry
The Attivo Agency
Automotive Resources
Acess Financial Group
Azur
Back at the Ranch
Bank of Albuquerque
Bank of Albuquerque - The Private Bank
Bank of the Rio Grande
Bank of the West
The Barley Room
Barn Dogs
Barn on the Pond - Tripp Bassett
BBVA Compass Bank
Beaver Toyota
Betty's Bath and Day Spa
Big Jo True Value Hardware
Bishop's Lodge Ranch Resort & Spa
Blue Rain Gallery
BlueCross BlueShield-NM
Boeing Company
Bookworks
Bosque School
Bouche Bistro
Box-Studio, LLC
Bradbury Stamm Construction Inc.
Broderick, Phillippi, Wright & Comunas, LLC
Broken Saddle Riding Co.
Brown & Brown Insurance of NM, Inc
Bueno Foods
Business Environments
C & C Distributors
C. G. Higgins Confections
Café Café
Cafe Pasqual's
Canine Social Club
Cardinal Health
Carolyn Baca Insurance Agencies
Casa De Rosa Assisted Living
Casa Verde Spa
Cashmere Rouge Spa
Century Bank
Century Sign Builders
Chaparral Electric Co., Inc.
Charlie's Sporting Goods
Chimayo Trading & Mercantile
Chocolate Donut Laboratory


Citi
City Treats Parties
Clark's Pet Emporium
Classic Party Rentals
Clear Channel Outdoor
Clear Vision Multi Services
CliftonLarsonAllen LLP
CNS Security
Coca Cola Refreshments
Coca-Cola Bottling Co. of Santa Fe, Inc.
Comcast
Corporacion de La Fonda
Cosmo Tapas
Cost Plus World Market
Costco
Creative Homebuyer's Inc.
Crecca Law Firm
Crystal Springs
Custom Craft Auto Collision
Daniella
DeAnza Developer LLC
Defined Fitness
Del Norte Credit Union
Del Norte Pharmacies & Home Medical Equipment of New Mexico
Desert Fish
Dion's Pizza - Peter Defries Corporation
Doggie Door Door Co.
Domino's #6531
Don Chalmers Ford & Chalmers
Capitol Ford Lincoln
Edo Spaces
The Egg & I
Elephant Bar
Elsa Ross Nob Hill
Emcore
Enterprise Holdings
Esparza Advertising
The Estée Lauder Companies
Ethicon Endo-Surgery
Exhibit Solutions of NM
EXHIB-IT!
ExplorAbilities
Eye Associates of New Mexico
Fam Jam! Music Together
Family Matters Adoption Resources
Fidelity Investments
First National Bank of Santa Fe
Flying Star Cafe - Nob Hill
Four Joys Chinese Restaurant
Four Seasons Resort Rancho Encantado Santa Fe
Freeport McMoRan Copper & Gold Foundation
Freeport-McMoRan Copper & Gold
French Family of Companies
Frogurt
Frontier Frames
Galisteo Bistro
Gamers Anonymous
General Mills
Geronimo
Gertrude Zachary
Golden Acorns Summer Camp
Golden Apple Foundation of NM
The Golden Eye
Griffin and Associates
The Grove Cafe and Market
Guy's Painting
Halo, Bravo Designs
Hank Racette, Inc. Life Insurance

Heritage Home Healthcare
Herrera Coaches
Hewlett Packard Albuquerque
Hey Jhonny
Hilton Santa Fe Golf Resort & Spa at Buffalo Thunder
Hinkle Family Fun Center
Homestart
Homewise
Hotel Andaluz
Hotel Parq Central
Hotel Santa Fe
HUB International Insurance Services
Hubbard Broadcasting/KOB-TV
Hyatt Regency Tamaya
Il Vicino
Image Electric & Mechanical
Ingles Company Realtors
Inn of the Governors
Inn on the Alameda
Innovate+Educate
Jinja Bar & Bistro
Joe's Dining
Kingston Residence of Santa Fe
Kiotti Clothing
Kirtland Federal Credit Union
Klinger Constructors, LLC
KSFR, Northern NM Radio Foundation
La Boca
La Montanita Co-op
La Posada de Santa Fe
Lakind Dental Group
La Vida Llena
Le Paris French Bakery
Lilly Barrack
Lima Kai Massage
Lockheed Martin/Sandia National Laboratories
The Lodge at Chama
Los Alamos National Bank
Los Alamos Ski Club
Los Pinos Fly & Tackle Shop
Los Poblanos Inn & Cultural Center
Love Frozen Yogurt Bar
Lovelace Health System
Lowe's Grocery
Loyola's
Lumenaria Lumenscapes
Maddox & Co.
Magic Mobile Home Supply
Mannie's Restaurant
Manning Florist
Marcello's Chophouse
Max's Beauty Salon
MEGA Corp.
Merrill Lynch
Michelsohn Creative Communications
Mid-Region Council of Governments
Molina Healthcare
Momentum Studio
Montgomery & Andrews
Morgan Stanley Smith Barney
Moss Adams, LLP
Mountain States Constructors, Inc.
Nambe
National Distributing Company
New Mexico Cancer Care Associates
New Mexico Dancewear
New Mexico Manufacturing Extension Partnership
New Mexico Mutual

New Mexico Orthopaedics
New Mexico PC, MD
New Mexico Rail Runner Express
New York Deli
New Mexico Bank and Trust
New Mexico Ear, Nose, Throat Specialists, P.C.
Nothing Bundt Cakes
Olive Garden
Olo Yogurt Studio
Olympia Cafe
Packard's on the Plaza
Patty's Salon & Spa
Payday Inc.
Payne's Nurseries & Greenhouses, Inc.
Peacock, Myers P.C.
Photo Booth Rentals of New Mexico
Picaflor Day Spa
Poms & Associates
Presbyterian Healthcare Services
Pueblo de Ninos Dental PC
Que Bonita
Quickbeam Systems, Inc.
Rachelle Shaw DDS
Real Burger
Reelz Channel
Resolution Graphics
Ristra
River Terrace Inn
RLR Resources
Robert L. Homer & Assoc. LLC
Rock Gap Engineering
Rock Paper Scissor Salonspa
Rosemont Realty
Rubin Katz Ahern Herdman & MacGillivray, P.A.
Sala & Associates
Sam's Club
Samuel Design Group
Sandia BMW
Sandia Laboratory Federal Credit Union
Sandia Preparatory School
Santa Fe Anesthesia Specialists

Santa Fe Audio Visual
Santa Fe Bar & Grill
Santa Fe BMW
The Santa Fe Opera
Santa Fe Valet
Santa Fe Walmart #3423
Santa Fe Walmart #829
Savoy Bar & Grill
Scalo Northern Italian Grill
Sealant Specialists, Inc.
Seasons Rotisserie and Grill
Serafin's Chile Hut
Shelton Jewelers
Shibumi
Skarsgard Farms
Slice Parlor
Smile Mohr Orthodontics
Sotheby's International Realty Foundation
Southwest Airlines
Southwest Brands
Southwest Oral & Maxillofacial Surgery
Southwestern Title and Escrow
Spirit of the Earth
Sport Surfaces Distributing, Inc.
The Springs Resort & Spa
Sprint
Sprouts Farmers Market
Starline Printing
State Farm/Cheryl Baker
The Stewart Corporation
Stixon Labels
Strings and Things at the Candyman
Studio Southwest Architects
Soulstice/Absolute Entertainment
Suby Bowden Associates
Sunbridge Horizons, LLC
Sunrise Family Restaurant
Susan's Fine Wine & Spirits
Sutin, Thayer & Browne APC
Target Store, ABQ NE
Ten Thousand Waves

The Cates Team at RBC
Wealth Management
Thornburg Charitable Foundation
Thornburg Investment Management
Tomasita's
Trader Joe's
Tree House Pastry Shop & Cafe
TriCore Reference Laboratories
Tux Window Cleaning
U.S. Trust - Bank of America
Undisputed Fitness/Crossfit Santa Fe
United Rentals
The Vein Center of New Mexico
Violante & Rochford Interiors
Vitamin Cottage/Natural Grocers
Vivre
Wagner Power Systems
Walmart #826
Walmart #831
Walmart Store #873
Walmart Supercenter #1380
Walmart Supercenter #2652
Walmart Supercenter #2656
Walmart Supercenter #3428
Walter Burke Catering, Inc.
Water Man
Wear Abouts
Wells Fargo Bank of New Mexico
Western Building Supply
Western Dermatology Consultants
Wheel Align It
Whole Foods Market
Wilcox Law Firm, P.C.
Wolf Creek Ski Area
Woods Design Builders, Inc.
World Class Watches
Worth of New York
Yanni's
Zacateca's
Zinc Wine Bar and Bistro



*Western
Dermatology
Consultants*

Trust your skin to
a dermatologist.
855-9267

Combining Dermatologists' Expertise with the Elegance of a Spa

Thank you

SPECIAL FRIENDS

- **Governor Susana Martinez** for her tremendous support of our students and programs.
- **New Mexico State Legislators** in support of The Hiland Theater renovation: Senator Sue Beffort, Senator Jacob Candelaria, Senator Daniel Ivey-Soto, Senator Tim Keller, Senator Linda Lopez, Senator Cisco McSorely, Senator Mark Moores, Senator Bill O'Neil, Senator Gerald Ortiz y Pino, Senator Michael Padilla, Senator Bill Payne, Senator Sander Rue, Senator John Ryan, Senator Benny Shendo, Senator Lisa Torraco, Representative Thomas Anderson, Representative Gail Chasey, Representative Earnest Chavez, Representative Miguel Garcia, Representative Nate Gentry, Representative Jimmie Hall, Representative Jason Harper, Representative Emily Kane, Representative Larry Larranaga, Representative Georgene Louis, Representative Moe Maestas, Representative Rick Miera, Representative Paul Pacheco, Representative Bill Rehm, Representative Jane Powdrell-Culbert, Representative Kiki Saavedra, Representative Sheryl Williams Stapleton, Representative Mimi Stewart, Representative Elizabeth Thompson, Representative Christine Trujillo, Representative Monica Youngblood, Representative James White with special thanks to Senator John Ryan, Representative Lucky Varela, Senator Tim Keller, and Representative Monica Youngblood for being our champions!
- **Mayor Richard J. Berry, Robin Dozier Otten, and the employees of the City of Albuquerque** for their increased support of our Hip To Be Fit Club and their dedicated work administering our Housing and Urban Development grant.
- **Mayor David Coss, the Santa Fe City Council, and the City of Santa Fe** for their support of our local programs.
- **Members of the Santa Fe County Sheriff's and Santa Fe Police and Fire Departments, and of the Albuquerque Police Department, UNM Campus Police, and Bernalillo County Sheriff's Department** for dancing in our shows.
- **Staff members of the New Mexico Department of Health**, especially David Vigil and Marissa Kutzscher, for their continued support and guidance.
- **Catherine Oppenheimer & Garrett Thornburg** for hosting our first Silver Sneakers reception in their home, and Catherine herself for showing an unending commitment to enlightening the lives of New Mexico's children.
- **Dianne & Don Chalmers and Don Chalmers Ford** for providing the fabulous Ford Flex for our Residency Program.
- **Diane Doniger** (The Dianiger...) for hosting our first summer Inside NDI New Mexico event and for being our fabulous in-house florist.
- **The d'Amboise family**; Jacques, Christopher and Charlotte for sharing their talents, beautiful choreography, time, and wisdom with our dancers.
- **Shirley MacLaine** for volunteering her effervescent spirit to inspire NDI New Mexico students and supporters.
- **Merrill Brockway** for his daily inspiration, his lifelong pursuit of excellence, and his enduring vision for The Merrill Brockway Library at The Dance Barns.
- **University of New Mexico Center for Education Policy Research** for their support of NDI New Mexico at all levels of learning.

- **Blue Rain Gallery and Los Poblanos Historic Inn & Cultural Center** for offering stunning venues for our Founders' Circle 2012 fall events.
- **Fred Palmer at Artichokes and Pomegranates** for generously offering beautiful arrangements at the drop of a hat.
- **Albuquerque Film and Media Experience** for partnering with NDI New Mexico at The Hiland.
- **Santa Fe Concert Association** for complimentary tickets for our students and staff.
- **Starline Printing** for their generous donation of printing.
- **Presbyterian Healthcare** for including NDI New Mexico in their first New Mexico Day of Service.
- **Jodi and Robin Stumbo** for graciously sharing their time, creativity, and marvelous children with us.
- **David Gershenson and Richard Peterson** for being our champions in Silver City.
- **Tyson Ledgerwood** for his strong support of our Residency Program in Hobbs.
- **The Yates Family** for their commitment to their community and NDI New Mexico.
- **All of our public elementary classroom teachers and in-school coordinators** for helping our programs run smoothly throughout the school year.
- **Principal Mike Lee and the staff at Gonzales Community School** for so generously sharing their gym with NDI New Mexico's Teaching Excellence® Workshop.
- **Ronna Kalish and the New Mexico Tech Performing Arts Series** for expert coordination of our Socorro Residency.
- **David Sandoval**, extraordinary parent, who waits patiently with Allegra and Danny many a night after Dance Barns classes and Company Xcel rehearsals for students to be picked up, helps turn off lights, and lock up the building, and always does it with a smile!
- **Daniel Pena**, Aspen Community School principal, for donating risers and flags for our Dance Barns Vocal Concert.
- **The New Mexico School for the Arts, Principal Cindy Montoya, Dance Department Chair Adam McKinney, and Foundation Director Riis Gonzales** for your generous partnership. We appreciate your gift of tickets and the talents you share with our students. Thank you for helping make The Dance Barns a community center for dance, learning, excellence, and friends.



EUREKA!
THANK YOU

NDI DANCE BARNs
FOR
10 FANTASTIC YEARS

GALA!
FLY ME TO
THE MOON

THE STUMBOS

BACK AT THE RANCH™
★ *Cowboy Boots* ★
Established 1990 Santa Fe, New Mexico



Handmade in Texas

209 East Marcy Street, Santa Fe, NM
1.888.962.6687
www.backattheranch.com




ELEVATE
YOUR CHILD'S
POTENTIAL

Do you need answers about your child's development?
ExplorAbilities helps families facing challenges in the areas of sensori-motor, speech/communication, feeding, or social development. Our team of pediatric physical therapists, occupational therapists, and speech-language pathologists are here to help. Through individualized treatment sessions with your child, the therapists utilize specific exercises and activities which are playful and motivating to encourage your child to work on specific skills. Stop worrying, call ExplorAbilities. It is one of the smartest things you can do for your child.

(505) 268-7988 • www.explorabilitiestherapy.com
5006 Copper NE • Albuquerque, NM 87108



The EGG&I™
Breakfast & Lunch
Serving Our Friends Daily



6909 Menaul Blvd Suite A Albuquerque, NM 87110
(505) 888-3447



CITY TREATS
CATERING & PARTIES
515 Wyoming Blvd NE
Albuquerque, NM 87123
505.238.5316
Like Us on Facebook at City Treats Parties

the best of both
diverse community | united spirit



Serving New Mexico students
of talent and character in grades 6-12.
www.aa.edu

505-828-3208 | 6400 Wyoming Blvd NE | Albuquerque, NM 87109
ALBUQUERQUE ACADEMY

**tacos
+tequila**

An Authentic Mexican
Taqueria & Tequila Bar
by Chef Mark Kiffin

Serving Lunch & Dinner
7 Days a Week



\$5 Margaritas
All day, Every day!

ZACATECAS

3423 Central Avenue NE • In Nob Hill
505.255.TACO (8226) • zacatecastacos.com

Thank you NDI New Mexico for
"Spreading the Joy of Dance"
to children who
might otherwise
never get this
experience! It is a
gift that can never
be taken away and
will last forever.



Jo's daughter, Jackie Church
Oliver, ABQ Artistic Director



Jo Church
Albuquerque Realtor
(505)235-2705
*I will donate 10% of commissions
earned on your transactions and referrals
to NDI New Mexico.*

The Ingles Company Realtors
6711 Academy Rd NE #B ABQ NM 87109 • (505) 828-1366



contemporary cuisine, classic service

*full service catering
party planning - weddings
special events - dinners*

WALTER BURKE CATERING
505-473-9600
www.walterburkecatering.com



Asian Restaurant
Chinese & Japanese

College Plaza
2400 Cerrillos Road
Santa Fe, NM 87505

(505) 983-3600/1331

Open 7 Days a Week
Sunday - Thursday 11:00 am - 9:30 pm
Friday - Saturday 11:00 am - 10:00 pm



Absolute Entertainment

Live Music & DJs

featuring this year's
NDI Gala event band

SOULSTICE
proud to support the arts

505 986 5882
www.musicsantafe.com



CLASSIC PARTY RENTALS®
EVENT SPECIALISTS

*Proud to support
National Dance Institute, NM*

Servicing Albuquerque and Santa Fe

CLASSIC PARTY RENTALS • 8615 Alameda Park NE, Albuquerque, NM 87113 • Phone: 505.344.9907

www.ClassicPartyRentals.com •  Classic Party Rentals Albuquerque



Clark's Pet Emporium

Locally Owned and Operated
for over 40 years

Knowledge Convenience Service



Birds • Reptiles • Fresh & Saltwater Fish • Small Animals

Largest Selection of Pet Supplies
in Albuquerque

2 Convenient Locations

4914 Lomas Blvd. N.E.
Albuquerque, NM 87110

268-5977

11200 Menaul Blvd. N.E.
Albuquerque, NM 87112

292-6288

www.clarkspets.com



Michael & Thomas
Steeple, Owners



SOUTHWEST
from the heart

C.G. Higgins

ARTISAN CHOCOLATES &
CHUCK'S NUTS ORIGINALS

CGHiggins.com

866.931.0615 toll free

505.820.1315 Santa Fe

Located at 847 Ninita Street at St. Francis Drive
Santa Fe, New Mexico 87505
info@cghiggins.com

KINGSTON
RESIDENCE
of SANTA FE



a fantastic place to
Celebrate Life!

Life at Kingston includes:



- A dedicated staff that will take care of your everyday needs so you can have time to enjoy yourself.



- Enjoyable dining experiences with nutritious meals served restaurant-style by our friendly staff.

- Personal health and wellness services for your specific needs.

- A community that welcomes you, supports you and cares for you!

Genuine Care ~ Dedicated To You

Kingston Residence of Santa Fe
2400 Legacy Court | Santa Fe, NM 87507
Independent Living ♦ Assisted Living ♦ Memory Care

505-471-2400
www.kingstonhealthcare.com

HOW DO
GIRLS
SUCCEED?

SCHEDULE A VISIT
AND FIND OUT!



Grades 6, 7, and 8
Fostering academic excellence,
critical thinking, creativity, and
emotional strength

Now accepting applications
Tuition assistance available

310 West Zia Road, Santa Fe, NM 87505
www.santafegirlsschool.org • 505.820.3188

We are community,

We are New Mexico.

Century Bank is committed to supporting organizations like NDI New Mexico that provide education and opportunity for the children of our community. Century Bank has been giving back for over 125 years, and that will never change.

Call us or visit any of our convenient locations to open your personal or business account today.

CENTURY BANK

People • Relationships • Community


877.424.2828 • centurynetbank.com

MEMBER
FDIC



Española • Santa Fe • Albuquerque • Las Cruces






SUNRISE
Family Restaurant

American & New Mexican Food
Monday - Sunday 7:00AM to 3:00PM Dine-In or Carry Out

Breakfast • Lunch • Daily Specials
"Best Menudo & Carne Asada in Town"

1851 Saint Michaels Drive
Santa Fe, NM 87505
505.820.0643

Santa Fe, New Mexico 2012 - 2918100412



Pueblo de Niños

Daniel A. Borrero, DDS
Dentistry for kids!

Pueblo de Niños Dental, PC
3252 Cerrillos Rd, Ste A
Santa Fe, NM 87507
(505) 954-1128
(505) 954-1132 Fax

"An adventure in dental care for kids"




WOODS
DESIGN BUILDERS

302 Catron Street
Santa Fe, NM 87501
www.woodsbuilders.com
505-988-2413

WOODS DESIGN BUILDERS is a family owned design-build firm that has been designing, building and remodeling the finest homes in Santa Fe for over thirty-five years. The award winning company is renowned for its commitment to excellence and dedication to client service.





Shane, Sharon and Rob



Loyola's

A Family Restaurant. Featuring American & New Mexican Food
4500 Central Avenue SE 268-6478


All In The Wrist Auto Repair is proud to support NDI New Mexico.

All In The Wrist
AIW
AUTO AND DIESEL REPAIR

allinthewristauto.com
1401 4th St, NW Albuquerque, NM 87102
505 242.9778

Albuquerque's only woman owned and operated full service repair shop.
Serving foreign and domestic vehicles.

BUSINESS LISTINGS

Amanda's Flowers
1610 St. Michael's Drive
Santa Fe, NM 87505
(505) 473-9212
crose@amandasflowers.net

Big Jo True Value Hardware, Inc.
1311 Siler Road
Santa Fe, NM 87507
(505) 473-2255
Bigjotruevalue.com

The Cates Team at RBC Wealth Management
6301 Uptown Blvd NE Ste 100
Albuquerque, NM 87110
(505) 872-5910
Catesteamrbc.com

Dion's
8525 Jefferson St. NE
Albuquerque, NM 87113
(505) 858-1010
Dions.com

Doggie Door Door Company
1431 Eubank Blvd. NE
Albuquerque, NM 87112
(505) 292-1138
Doggiedoorco.com

Enterprise Rent-A-Car
4740 Pan American Fwy NE
Albuquerque, NM 87109
(505) 880-9797
Enterprise.com

Eye Associates of New Mexico
5757 Harper NE
Albuquerque, NM 87109
(505) 888-5757
Eyenm.com

The Golden Eye
115 Don Gaspar
Santa Fe, NM 87501
(505) 984-0040
paula@goldeneyesantafe.com

Guy's Painting Company, Inc.
33 Bisbee Court Unit E
Santa Fe, NM 87508
(505) 473-0093
Guyspaintingco.com
Interior & Exterior Painting

Joe's Dining
2801 Rodeo Rd. Suite A5
(at Zia)
Santa Fe, NM 87507
(505) 471-3800
Joessdining.com

Michael's Valet
1896 Lorca Drive
Santa Fe, NM 87505
(505) 995-8689
Artvangosantafe.com/valet

New Mexico Cancer Care Association
490-A West Zia Road

Santa Fe, NM 87505
(505) 913-8900
Fax (505) 913-8922

New Mexico Mutual
3900 Singer Blvd. NE
Albuquerque, NM 87109
(505) 345-7260
Newmexicomutual.com

New Mexico Orthopaedics
201 Cedar SE, Ste 6600
Albuquerque, NM 87106
(505) 724-4300
Newmexicoorthopaedics.com

Olympia Cafe
2210 Central Ave SE
Albuquerque, NM 87106
olympiacafeabq@aol.com
Olympiacafeabq.com

Clarice K. Pick, D.D.S., P.C.
125-A Siringo Road
Santa Fe, NM 87505
(505) 982-0094
pickdd@aol.com

Patty's Salon & Spa
Deep tissue, prenatal, hot stone
massage, hot tub & sauna
5410 Lomas Blvd NE
(505) 265-0111
Pattysssalon.com

Poms & Associates Insurance Brokers Inc.
320 Osuna NE, Suite B
Albuquerque, NM 87107
(505) 344-2747
Pomsassoc.com

Serafin's Chile Hut
3718 Central Avenue SE
Albuquerque, NM 87108
(505) 266-0029
Facebook.com/Serafins.hut

Smile Mohr Orthodontics
3900 Eubank Blvd. NE #7
Albuquerque, NM 87111
(505) 292-1282
Smilemohr.com

Wearabouts
70 W. Marcy Street
Santa Fe, NM 87501
(505) 982-1399
wearaboutssf@yahoo.com

Wheel Align It
1300 2nd Street NW
Albuquerque, NM 87102
(505) 247-2531



CANINE SOCIAL CLUB LLC

FREE ROAM BOARDING & DAYCARE FOR OVER 17 YEARS!

Let's dance! (505) 989-1362

WWW.CANINESOCIALCLUB.INFO

always inspire

daniella
Clothing. Jewelry. Accessories.

AG Jeans
A.L.C.
Alice + Olivia
current/elliott
Equipment
JBrand
James Perse
Joie
Me&Ro
Minnie Rose
Twelfth Street by Cynthia Vincent
Wildfox

exclusively at daniella

50 FAVORITE ELLE BOUTIQUES

500 Market Street
Market Station at the Railyard
505.988.2399
www.shopdaniella.com
Mon-Sat 10-6, Sun 12-5

CUSTOM CRAFT

COLLISION GLASS MECHANICAL

ANDREW GALLEGOS
ROBERT GALLEGOS

505.438.8878

www.custom-craft.net

I-CAR PLATINUM **ASA** **acoat selected** **NFIB**

Land Rover

Audi **Lexus** **Volvo** **Scion** **Mercedes** **Toyota**

- Northern New Mexico's ONLY I-CAR Platinum Class shop with lifetime warranty on all repairs

- Its YOUR car, YOUR claim, YOUR choice!!!!

- #1 in customer satisfaction, quality & service in northern New Mexico for over 22 years!

- Call for honest advice on handling your claim

DESERT ACADEMY
Engaging the mind. Engaging the world.

Now Enrolling Grades 6-12

We salute all the hard work of the NDI New Mexico performers!

International Baccalaureate World School

COLLEGE PREPARATORY GRADES 6-12
7300 Old Santa Fe Trail
992-8284 • www.desertacademy.org

Partners for a better quality of life.

As one of the largest healthcare companies in the world, Cardinal Health is an essential link in the supply chain providing pharmaceuticals and medical products to more than 60,000 locations each day. We are focused on making healthcare more cost-effective so our customers can focus on their patients.

Cardinal Health is proud to support the communities where our employees live and work through employee contributions, volunteers and corporate investments.

CardinalHealth
Essential to care™

© 2012 Cardinal Health. All rights reserved. CARDINAL HEALTH, the Cardinal Health LOGO and ESSENTIAL TO CARE are trademarks or registered trademarks of Cardinal Health. All other marks are the property of their respective owners. Lit. No. SCR8851 (03/2012)

NEW MEXICO
BIO PARK SOCIETY

Become a BIOPARK PARENT

starting at \$25

Support your favorite animal, plant, fish or insect
at the ABQ BioPark Zoo, Aquarium or Botanic Garden



BioPark Parents are
the Hipp-est!

Your sponsorship really does make a difference!

Funds support programs for
care, procurement, enrichment, conservation & education

www.bioparksociety.org • (505) 248-8547

DELIVERY AVAILABLE *Del Norte Pharmacies*
& Home Medical Equipment
of New Mexico

New Mexico's
Compounding Specialists

- Dental Preparations
- Dermatology
- Hormone Replacement Therapy
- Hospice Medications
- Oncology
- Pain Management
- Pediatrics
- Physical Therapy
- Podiatry
- Sports Medicine
- Veterinary Prescriptions

PORTABLE OXYGEN CONCENTRATORS

Excellent for high elevations

THESE VACCINES ADMINISTERED ONSITE:

- FLU
- PNEUMONIA
- SHINGLES
- TRAVEL RELATED VACCINES

LAS VEGAS
602 University Avenue
505.425.6241 • 800.677.0852

RATON
955 South 2nd Street
575.445.3131 • 800.431.5779

1691 Galisteo, Santa Fe
505.988.9797 800.434.1202
visit us online at delnortepharmacy.com

Free Speech



Free speech is a right.

Public Radio protects that right.

Public Radio is not owned
by corporations.

Public Radio does not speak
for the government.

Public Radio speaks for the Public.
Public Radio is -
for the people, by the people,
of the people.

What did **YOU** hear
on KSFR Today?



www.ksfr.org

Santa Fe Audio Visual

Presentation
Equipment Rental and Sales
Sound Systems
Instrument Rental

Proudly Serving the Community
for over 23 years

(505) 986-1796 Fax (505) 986-8065
1595 Pacheco, Suite B, Santa Fe, NM 87505
www.santafeav.com



Thank you NDI
New Mexico!



Computer and Network
Security Analyst
<http://www.cnssec.com>

We've been
supporting best
practices since 1913.

(505) 878-7200 WWW.MOSSADAMS.COM

100 years
THAT COUNTS
1913-2013

MOSS-ADAMS LLP
Certified Public Accountants | Business Consultants

Acumen. Agility. Answers.



Mention this ad and get **\$5** off your next 1 hr massage

Step on in to **Lima Kai**
BODYWORKS
for a relaxing massage

(505) 247-1469

www.limakaimassage.com

ADVERTISERS INDEX

Absolute Entertainment/Soulstice	78
Academy for the Love of Learning	21
Albuquerque Academy	76
Albuquerque Journal	39
Alcon Entertainment	56
All In The Wrist Auto Repair	83
Allstate Carolyn Baca	56
Amanda's Flowers	84
Asian Adobe	57
Asian Restaurant	78
Automotive Resources	50
Back at the Ranch	76
Barn Dogs	54
Beaver Toyota	42
Big Brothers Big Sisters	51
Big Jo True Value Hardware	84
Blue Rain Gallery	54
Bosque School	57
C.G. Higgins Confections	81
Canine Social Club	85
Cardinal Health	85
The Cates Team at RBC Wealth Management	84
Century Bank	81
Genoveva Chavez Community Center	53
City Treats Parties	76
Clarice K. Pick, DDS	84
Clark's Pet Emporium	80
Classic Party Rentals	79
CNS Security	87
Coca-Cola Bottling Company of Santa Fe	38
Comcast	25

Innovate + Educate	6
Il Vicino Pizza	65
Ingles Company Realtors, Jo Church	77
Inn on the Alameda	54
Jinja Bar & Bistro	65
Joe's Dining	84
Kingston Residence	81
Kiote Clothing	56
Klinger Constructors LLC	2
KSFR, 101.1 FM	86
La Vida Llena	71
Los Alamos National Bank	1
Lima Kai Bodyworks	87
Lovelace Westside Hospital	21
Loyola's Family Restaurant	83
Maddox & Co Realtors	71
Magic Mobile Home Supply	57
Mannies Restaurant	42
Michael's Valet	84
Momentum Studio	42
Moss Adams	87
New Mexico Mutual	84
New Mexico BioPark Society	86
New Mexico Cancer Care	84
New Mexico Orthopaedics	84
Olympia Café	84
Packards on the Plaza	43
Patty's Salon & Spa	84
Payne's Nurseries & Greenhouses, Inc.	55
Poms & Associates Insurance Brokers Inc.	84
Pueblo de Niños	82

“Thank you for an awesome experience and for touching the lives of so many students in such a positive manner.”

Cosmo Tapas	67
Creative Homebuyer's Inc.	66
Custom Craft	84
Dance-A-Thon Sponsors	54
Daniella Clothing, Jewelry, Accessories	85
Del Norte Credit Union	40
Del Norte Pharmacies &	
Home Medical Equipment of New Mexico	86
The Egg and I	77
Desert Academy	85
Dion's	84
Don Chalmers Ford & Chalmers	Inside Back Cover
Capitol Ford Lincoln	
Doggie Door Company	84
Dorathi Bock Pierre Scholarship	7
The Golden Eye	84
Enterprise Rent-A-Car	84
The Estée Lauder Companies	71
ExplorAbilities Inc.	77
Eye Associates of New Mexico	84
First National Bank of Santa Fe	4
Freeport MacMoRan	48
Frogurt Santa Fe	53 & 56
Frontier Frames	53
Golden Acorns Summer Camp	67
Griffin & Assoc.	51
Guy's Painting Company	84
Stumbo Family	76
Homestart/ Homewise	40
HUB International Ins Services	50

Rio Grande School	65
Rotary International	52
Rosemont Realty	5
Sandia Preparatory School	52
Santa Fe Audio Visual	87
Santa Fe Community College	55
Santa Fe Girls' School	80
Santa Fe Prep	34
Serafin's Chile Hut	84
Smile Mohr Orthodontics	84
Sotheby's/Shane Cronenweth	55
Southwest Airlines	80
Southwestern Title & Escrow	51
Starline Printing	Inside Front Cover
State Farm/Cheryl Baker	41
Sunrise Family Restaurant	82
Thornburg Investment Management	Back Cover
United Rentals	8
Veterans for Peace	67
Walter Burke Catering	78
Wearabouts	84
Wells Fargo	9
Western Dermatology Consultants	73
Wheel Align It	84
Woods Design Builders	82
Worth New York	53
Yanni's Catering & Events	43
Yates Petroleum Corporation	19
Zacatecas	77

Don Chalmers
Ford and
Chalmers
Capitol Ford
Lincoln
join NDI in
"Imagining the
Possibilities!"



Imagine the possibilities in a Ford!

We are proud
NDI sponsors,
and celebrate
their impact
in our schools.

Imagine the
Possibilities!

DON CHALMERS
Real Value...Real People...Real Simple.


Rio Rancho
DonChalmersFord.com
(505) 897-2500

DON CHALMERS
CAPITOL
 LINCOLN

Santa Fe
ChalmersCapitolFord.com
(505) 473-3673



Teaching Children Excellence

At Thornburg, we are proud to share NDI-NM's values:

• **BE HEALTHY** • **WORK HARD** • **DO YOUR BEST** • **NEVER GIVE UP!**



Investment Management®