



NDI New Mexico 2020



Offering quality
promotional materials
to the southwest
ART community
since 1957.



STARLINE
PRINTING COMPANY, LLLP

7111 Pan American Hwy NE • Albuquerque, NM 87109
505.345.8900 • www.starlineprinting.com

GARCIA | 
SUBARU NORTH
6401 San Mateo Blvd NE | Albuquerque, NM
(505) 837-5200 | garciasubaruofalbuquerque.com

PROUD SPONSOR OF NDI NEW MEXICO

Work**Hard**

Do Your**Best**

Never Give Up

Be**Healthy**



 **GARCIA**
automotive group

GARCIA ABQ



GARCIA SANTA FE



Mercedes-Benz



GARCIA EL PASO



GARCIACARS.COM

TRUST YOU HAVE COUNTED ON FOR OVER 50 YEARS

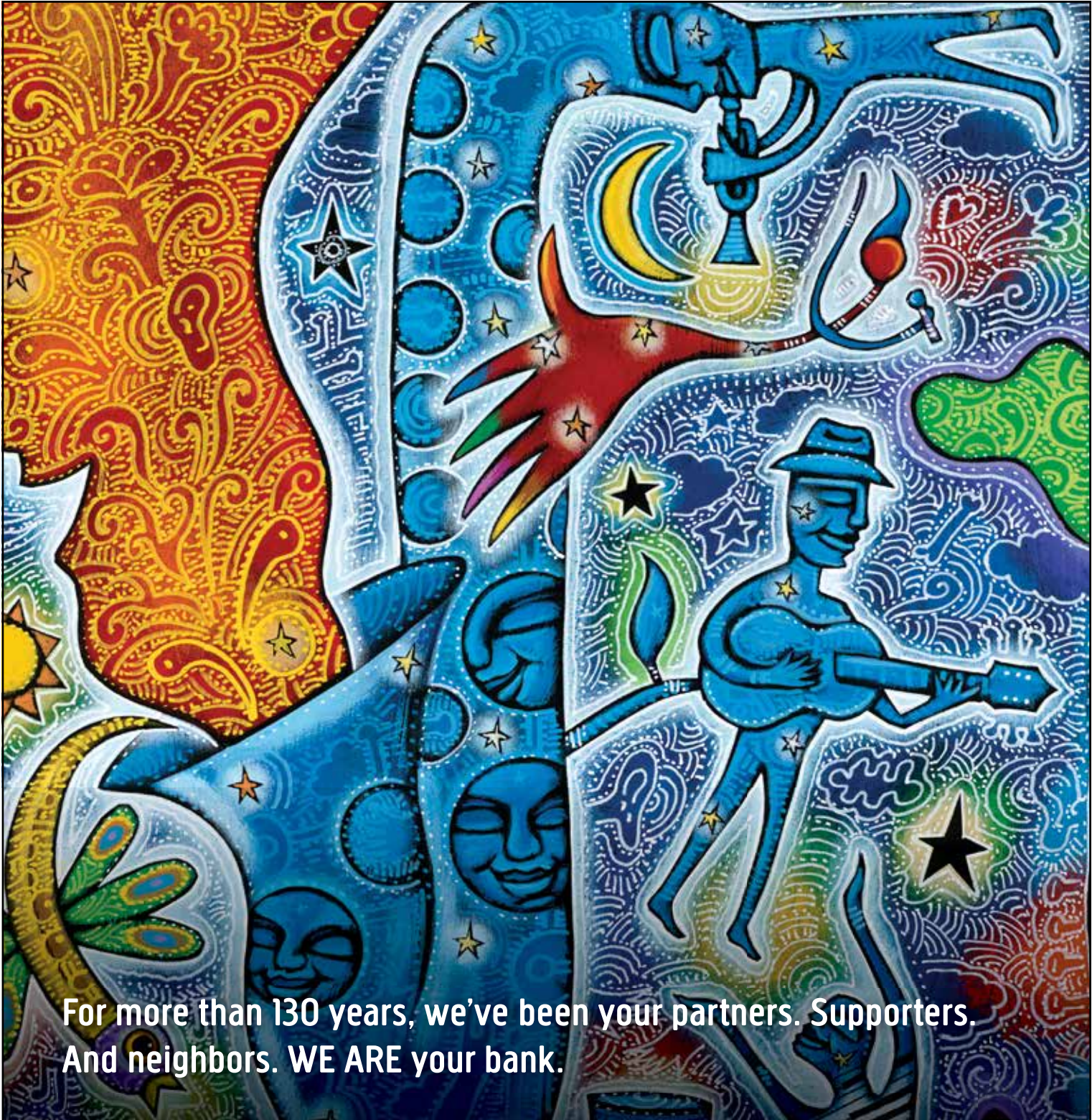
Congratulations on **26 years** of helping kids move in the right direction



Encouraging active lifestyles is an important part of improving the health and wellness of New Mexicans. Presbyterian Healthcare Services proudly supports NDI New Mexico in its efforts to keep our kids moving toward a healthy future.

 **PRESBYTERIAN**
Santa Fe Medical Center
www.phs.org

 **PRESBYTERIAN**
Healthcare Foundation



For more than 130 years, we've been your partners. Supporters.
And neighbors. **WE ARE** your bank.

CENTURYBANK

We Bring Local to Life.

MyCenturyBank.com | 505.992.1200



MEMBER
FDIC

NDI New Mexico is founded with the knowledge that the arts have a unique power to engage and motivate children. The purpose of our distinctive programs is to help children develop discipline, a standard of excellence, and a belief in themselves that will carry over into all aspects of their lives.

Mission



CONTENTS

4	NDI New Mexico Mission
6	Board Chair & Executive Director Welcome
7	Board of Directors & Emeritus Board
8	In Loving Memory of Beth Moise & Past Board Chairs
10	Dare to Dream! We Believe in YOU!
16	Statewide Map
17	Who We Serve
18	Measurable Results
20	Our Programs
24	Teaching Excellence®
25	Our Partner Schools
26	NDI New Mexico Timeline
28	Our 2020 Graduates
33	Ways to Give
34	Giving the Gift of Excellence
36	Silver Sneakers Legacy Society
38	Our Supporters
48	Ten Year Donors
50	Movers and Shakers
51	Corporate Council
52	Corporate Partners
54	In Honor Of and In Memory Of
56	2020 Gala Sponsors
58	Special Friends
60	NDI New Mexico Staff
96	Advertisers' Index



THE DANCE BARNs 1140 Alto Street Santa Fe, NM 87501 Phone 505.983.7646	THE HILAND 4800 Central Avenue SE Albuquerque, NM 87108 Phone 505.872.1800
---	---

CONTRIBUTING WRITERS
Russell Baker, Liz Salganek, Gemtria St Clair

CONTRIBUTING PHOTOGRAPHERS
Andrea Basile, Pat Berrett, Audrey Derell,
InSightfoto.com, Dan Pearlman, Laurie Wisdom

Visit us on Facebook, Twitter, LinkedIn, YouTube, and Instagram

Printing of this Program Book
Generously Donated by



Dear Friends,

Each year the NDI New Mexico program culminates in blockbuster performances with thousands of children and incredible community support for their achievements and success. Although our performances aren't happening as usual, we want to acknowledge the hard work, creativity, teamwork and perseverance by our children, teachers and staff that went into this school year and during NDI New Mexico's response to COVID-19. We thank everyone who has participated in our programs including the hardworking public-school teachers and principals, our dedicated donors and volunteers, the government allies who support us each year, and especially the families and children we serve.

Since inception, NDI New Mexico has reached over 120,000 children with programs that support their academic success, improve their health, enhance their quality of life, and build their self-confidence. For many children, our unique methodology of using the arts to teach life skills has been a key to unlocking a path of learning and achievement. These outcomes have always been important, and they are so now more than ever.

NDI New Mexico is committed to enhancing and sustaining our impact on the lives of children and the communities in which they live. We will do this by pursuing excellence in innovative programing, operational management and financial growth. Your continued collaboration and support will make this incredible vision a reality.

Thank you for being part of children's well-being, their success and their future.

Yours in teaching children excellence,



Marc Geller
Board Chair



Russell Baker
Executive Director



We are guided by our belief in children as well as our dedication to social responsibility, excellence, sustainability, and financial integrity.

NDI NEW MEXICO BOARD MEMBERS

- | | | |
|--|----------------------|------------------------|
| Marc Geller, Chair | Paul Cassidy | Mayo Miller King |
| John Berndt, Vice-Chair | Linda DiPaolo Love | Barbara Moore |
| Gerald Landgraf, Treasurer | Diane Doniger | Leslie Nathanson Juris |
| Julia B. Bowdich, Secretary | Diane Fisher | Thomas Nickoloff |
| Catherine Oppenheimer,
Founding Artistic Director | Kelcy Flanagan | Sandy Seligman |
| Jacques d'Amboise, Co-Founder | David Foster | Carrie Terrell |
| Valerie T. Diker, Founding Chair | James E. Goodwin Jr. | Katie Thompson |
| | Peggy Hubbard | David Vogel |

NDI NEW MEXICO EMERITUS BOARD MEMBERS

- | | | |
|------------------------|-------------------|---------------------------|
| Nancy Blaugrund | Michael D'Alfonso | Frauke Roth |
| Louise Campbell-Tolber | Susan Dubin | Charles W.N. Thompson Jr. |
| Dianne Chalmers Wiley | Medora Jennings | Garrett Thornburg |
| David Chase | Cindy Johns | |
| William Cowles | Edward Lujan | |



In Loving Memory

OF OUR DIRECTOR AND PAST BOARD CHAIR
DR. BETH M. MOISE 1945-2019



"Beth's friendship, spirit, generosity, wisdom, and leadership made an indelible impact on NDI New Mexico. She championed the excellence and joy within each of us."

Board Chair 2013-2014 – 20th Anniversary year
Strategic Planning Committee Chair 2016-2019
Governance Committee Chair 2009-2015

PAST BOARD CHAIRS 1994-2020



CREATE POSSIBILITY!



Photo Credit: Audrey Derrell 2018

At First National 1870, our goal is to create possibility in the lives we touch and the communities we serve. We are proud to support NDI New Mexico and share its commitment to social responsibility, excellence, sustainability and financial integrity.

To learn more about our personal and business banking solutions,
please visit FirstNational1870.com

*Dare to Dream!
We Believe in*

YO!!!

In 96 public elementary schools all over the state, NDI New Mexico instructors and musicians **inspire and motivate dancers** to reach for the **excellence** they need to fulfill their dreams.



NDI NEW MEXICO GIVES CHILDREN THE CONFIDENCE THEY NEED TO PURSUE THEIR DREAMS. USING THE CORE FOUR – WORK HARD, DO YOUR BEST, NEVER GIVE UP, BE HEALTHY – TO INSTILL A POWERFUL STANDARD OF EXCELLENCE, NDI NEW MEXICO TEACHES THAT DETERMINATION AND TENACITY ARE PATHWAYS TO SUCCESS, BOTH NOW AND IN THE FUTURE. By weaving joyful learning into every program, NDI New Mexico gives dancers the self-assurance to try new things, persevere through challenges, and experience the rewards that come from achieving their goals. These small and large successes build a child's courage to pursue, their strength to act on, and their optimism to believe in BIG DREAMS.

joyful learning

In 96 public elementary schools all over the state, NDI New Mexico instructors and musicians inspire and motivate dancers to reach for the excellence they need to fulfill their dreams. Each class builds upon the last to guide dancers through a rigorous curriculum that ends with a lively performance celebrating their successes.



EMILY LOWMAN, SANTA FE OUTREACH ARTISTIC DIRECTOR, loves walking into El Camino Real Academy where eager children greet her each week with a cheery “good morning, Ms. Emily” as she makes her way down the hall. She sees older students she taught in previous years, her current 4th-graders, and younger students she will teach in coming years. Everyone, including the custodians and office staff, gives her a friendly wave when they see her.



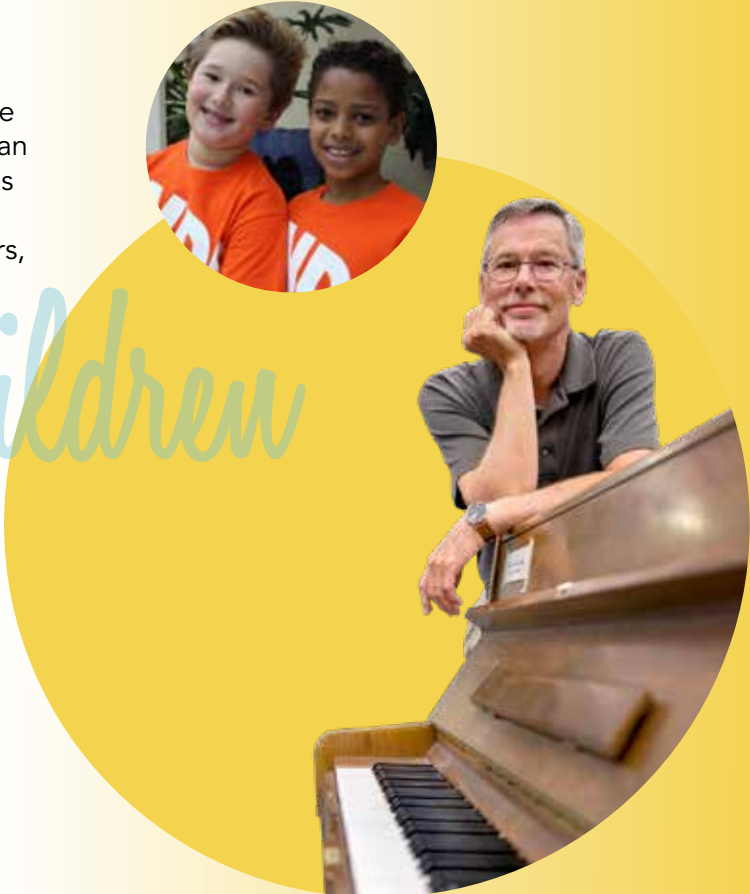
Emily’s eyes sparkle when she talks about her class. “I am excited to see the children getting ready for their end-of-year performance. They can do much more than they ever dreamed they could at the beginning of the year. I love to watch their confidence grow as they imagine how it will feel to dance in the spotlight for their friends and families.”



BERT DALTON, NDI NEW MEXICO’S MUSIC DIRECTOR, is already in the gymnasium rolling the piano out of the storage closet for class. Music is an indispensable element of every class, and Bert has been providing lively musical accompaniment for over 20 years. Using music to motivate the dancers, he is an essential part of the teaching team.

inspire children

Bert enthusiastically adds, “Each year, the music supports the themes for the shows. These shows inspire children to envision horizons beyond NDI New Mexico and to broaden the scope of their dreams. I love taking an idea from the classroom to the stage and watching the dancers successfully accomplish the vision we all worked so hard to realize.”



EACH AFTERNOON THE HALLS OF THE DANCE BARN AND THE HILAND ARE FILLED WITH CHILDREN AGES 3-18. Community classes in ballet, jazz, tap, modern dance, hip-hop, theater, and voice are simultaneously conducted in multiple studios at each campus. Tiny tap shoes ring on hardwood floors as parents look on with delight. Aspiring ballerinas and dancers from the Boys Ballet Bootcamp work hard to strengthen their bodies and increase their endurance. Afterschool programs inspire some dancers to dream of careers in the performing arts as they rehearse diligently for their upcoming performances. But no matter what their futures hold, they tell us that dancing with NDI New Mexico gives them the tools they need to be successful, whatever dream they decide to pursue.



bright futures

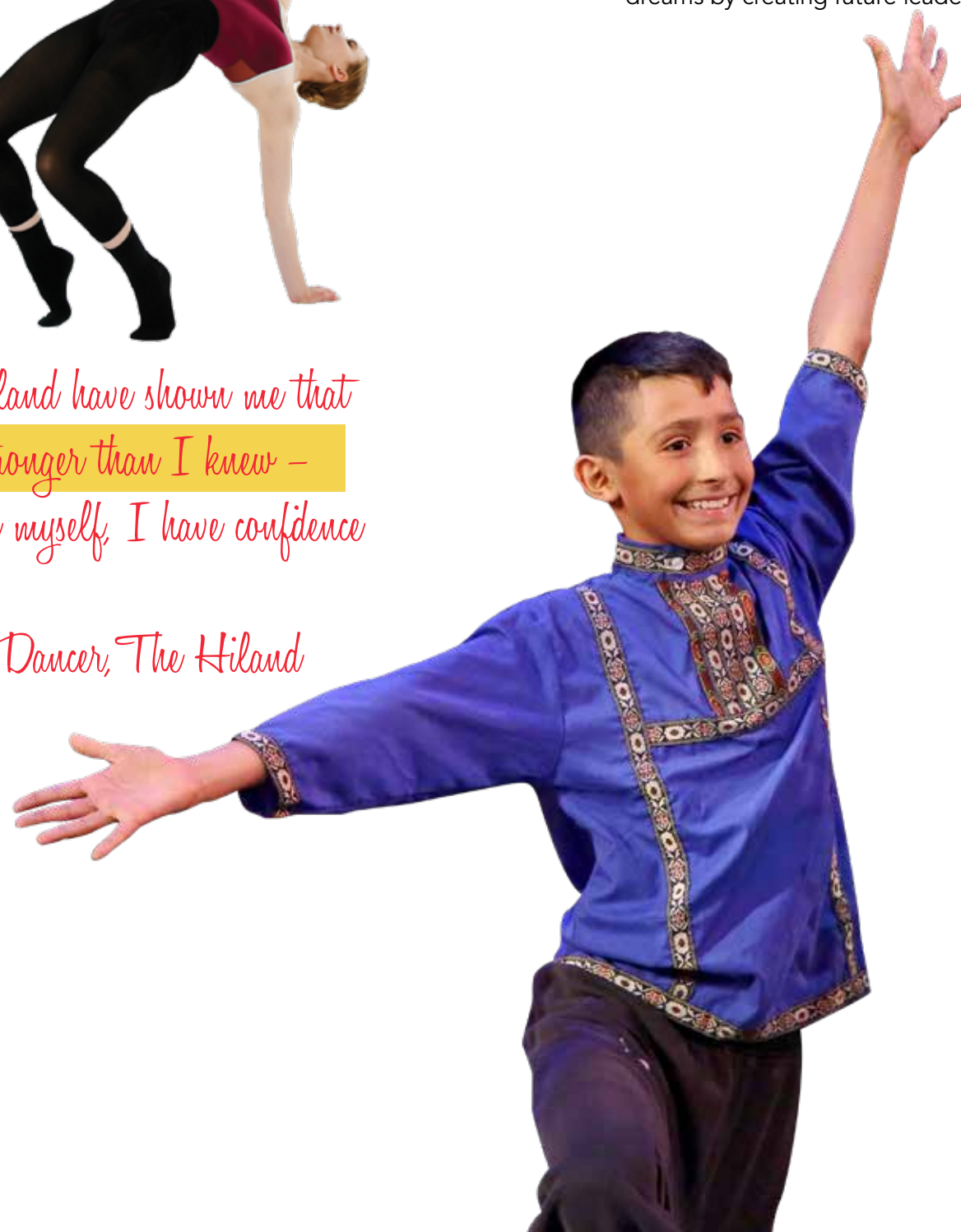


NDI NEW MEXICO COLLABORATES WITH HIGH-SPIRITED AND ENTHUSIASTIC ALLIES. These community partners believe in New Mexico's children and understand the importance of youth development programs that prepare today's young people to be tomorrow's citizens. They have big dreams for New Mexico, and NDI is helping fulfill those dreams by creating future leaders.

"NDI New Mexico's programs enrich our state by teaching our children the most important core values through dance, helping to develop the next generation of New Mexico's leaders."

- Governor Michelle Lujan Grisham

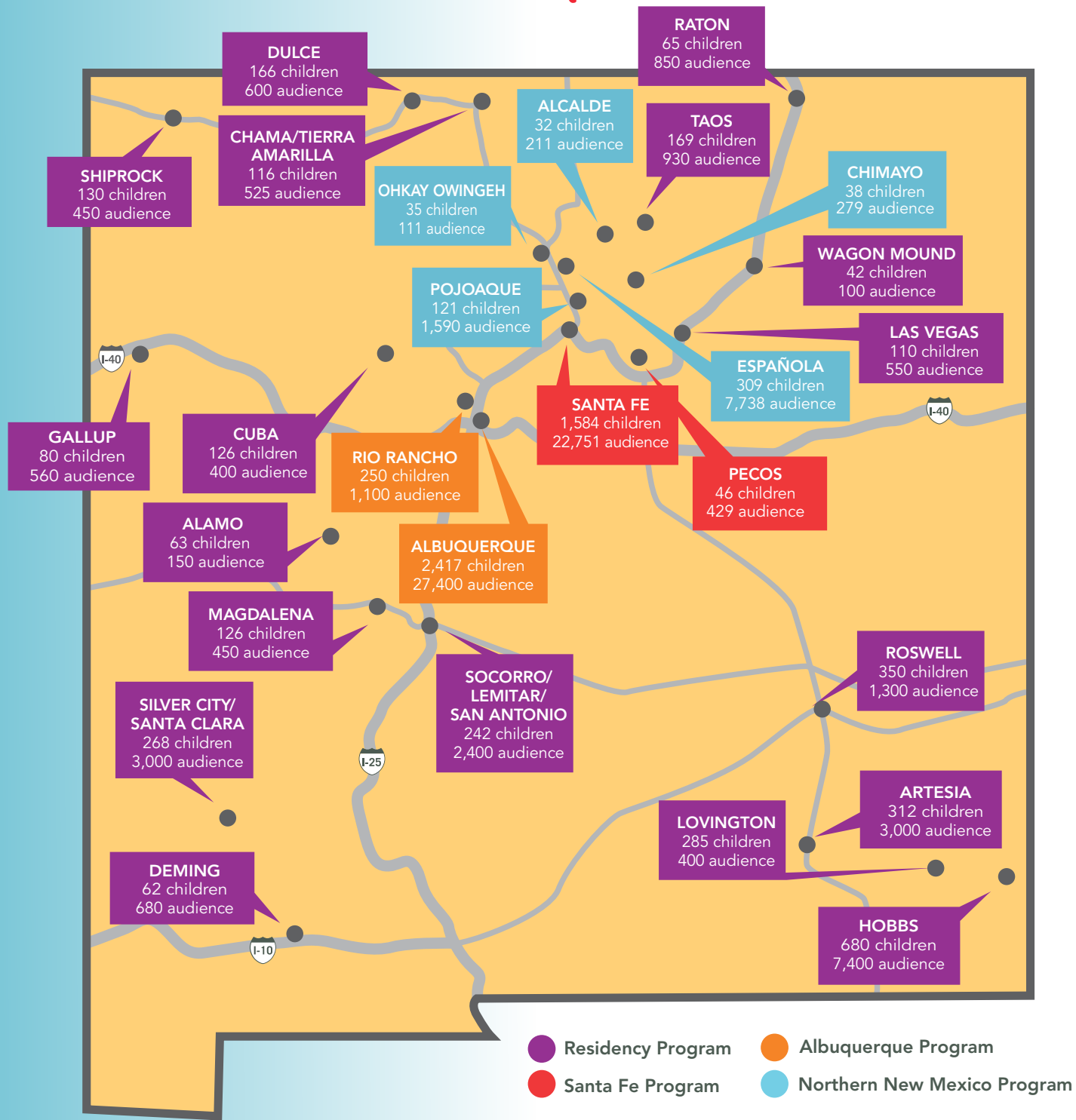
Over the last 25 years NDI New Mexico has used the creative power of the arts to inspire children and bring communities together in powerful ways. By developing the skills, attitudes and self-confidence children need to build productive lives, we know that their futures will be bright. We are excited to dream of serving the next generation of children and hope you will support us as we embark on that journey.



"Afterschool classes at The Hiland have shown me that I am physically and mentally stronger than I knew - when I work hard and believe in myself, I have confidence that I can achieve my dreams."
- Katy Burt, XCel Company Dancer, The Hiland



Statewide Map



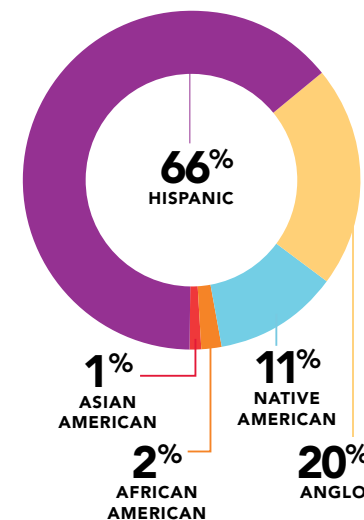
Who We Serve



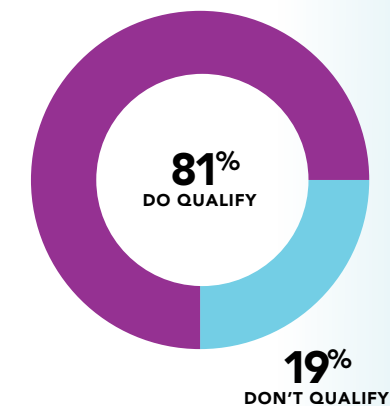
NDI New Mexico believes that every child has the capacity to learn how to be excellent by working hard, doing their best, never giving up, and being healthy. Our commitment is to offer all children an opportunity to experience success through our programs, thereby learning essential life skills.

We serve a diverse population of children in schools that have the greatest need in rural, urban, and Native American communities throughout the state. Our afterschool programs provide excellent and affordable opportunities for families who might not otherwise be able to participate in extracurricular performing arts programs.

Demographics of NDI New Mexico Students



NDI New Mexico Students Qualifying for the Federal Free or Reduced Cost Meal Program



1,005 children
DANCE BARN & HILAND AFTER-SCHOOL CLASSES & COMPANIES

1,003 children
ADVANCED TEAMS
SWAT & CELEBRATION

3,281 children
IN-SCHOOL RESIDENCIES

3,300 children
IN-SCHOOL ALBUQUERQUE, SANTA FE, RIO RANCHO & NORTHERN NEW MEXICO

More than twelve years of independent, scientific evaluations show how participation in NDI New Mexico programs works to improve students' academic performance.

Measurable RESULTS



 writing

42.9 48.3

 math

34.4 37.9

 science

34.6 36.7

 reading

36.7 39.2

 grade point average

C+ 2.3 gpa B+ 3.3 gpa

NDI New Mexico students show higher standardized test scores in all four areas of core curriculum and receive up to one grade higher than other students in their district.

Proven teaching techniques + supportive schools + dedicated instructors + powerful performances = healthier students who are successful in school and feel prepared for life.

Measuring the benefits of NDI New Mexico's programs on the children we serve is important for ensuring quality in the classroom and quantifying our impact to partners and supporters. Testimonials from parents, dancers, and educators tell a rich story of how NDI New Mexico's programs change children's lives.

More than twelve years of independent, scientific evaluations show how participation in NDI New Mexico programs works to improve students' academic performance. NDI New Mexico curriculum also supports executive function skills that children need to perform independently, including improved focus, perseverance, self-control, goal setting, problem

solving, organization, and decision-making. Our dancers exhibit higher standardized test scores and GPA scores than those of their peers.

The most recent program analysis, conducted by UNM's Prevention Research Center, of NDI New Mexico's Advanced Training students and their peers showed that overall, students who participated in NDI New Mexico Advanced Training programs had fewer absences during the school year, statistically higher GPA's, and higher odds of scoring in the proficient or advanced range when testing for the New Mexico Standards-Based Assessment (NMSBA) in both math and reading compared with peer students that did not participate.



OUR programs

NDI New Mexico's fundamental belief is that every child has the capacity to learn to work hard, never give up, do their best, and ultimately experience success. Whether a child dances with us for one year, or comes back year after year, we know their experience has a positive and lasting impact on the way they see themselves and move through the world.

In the 2019-2020 school year, over 8,400 students in 31 communities across the state are participating in our award-winning programs.

In-School Program

NDI New Mexico Outreach classes are taught at public elementary schools during the school day as part of the schools' curriculum. These joyful and energetic classes are taught by highly trained NDI New Mexico instructors and professional pianists. In-School classes serve an entire grade level (3rd, 4th, or 5th) and are fully inclusive of all children in a class, including those with special needs. Children in Albuquerque, Rio Rancho, Santa Fe, Pecos, Pojoaque, and the Española Valley receive 15-30 weekly classes throughout the school year and finish their program with exciting culminating performances. All NDI New Mexico Outreach classes are free of charge for children and their families.

Advanced Teams

Many students who are exposed to NDI New Mexico in their public schools demonstrate extraordinary motivation and enthusiasm for the effort and energy this pedagogy requires. These students are invited to audition to join our Advanced Teams, offered in 10 communities throughout the state. Advanced Training happens after school or on Saturdays and starts in the 4th-grade with SWAT (Super Wonderful Advanced Team) and continues into middle school with the Celebration Team.



Residency Program

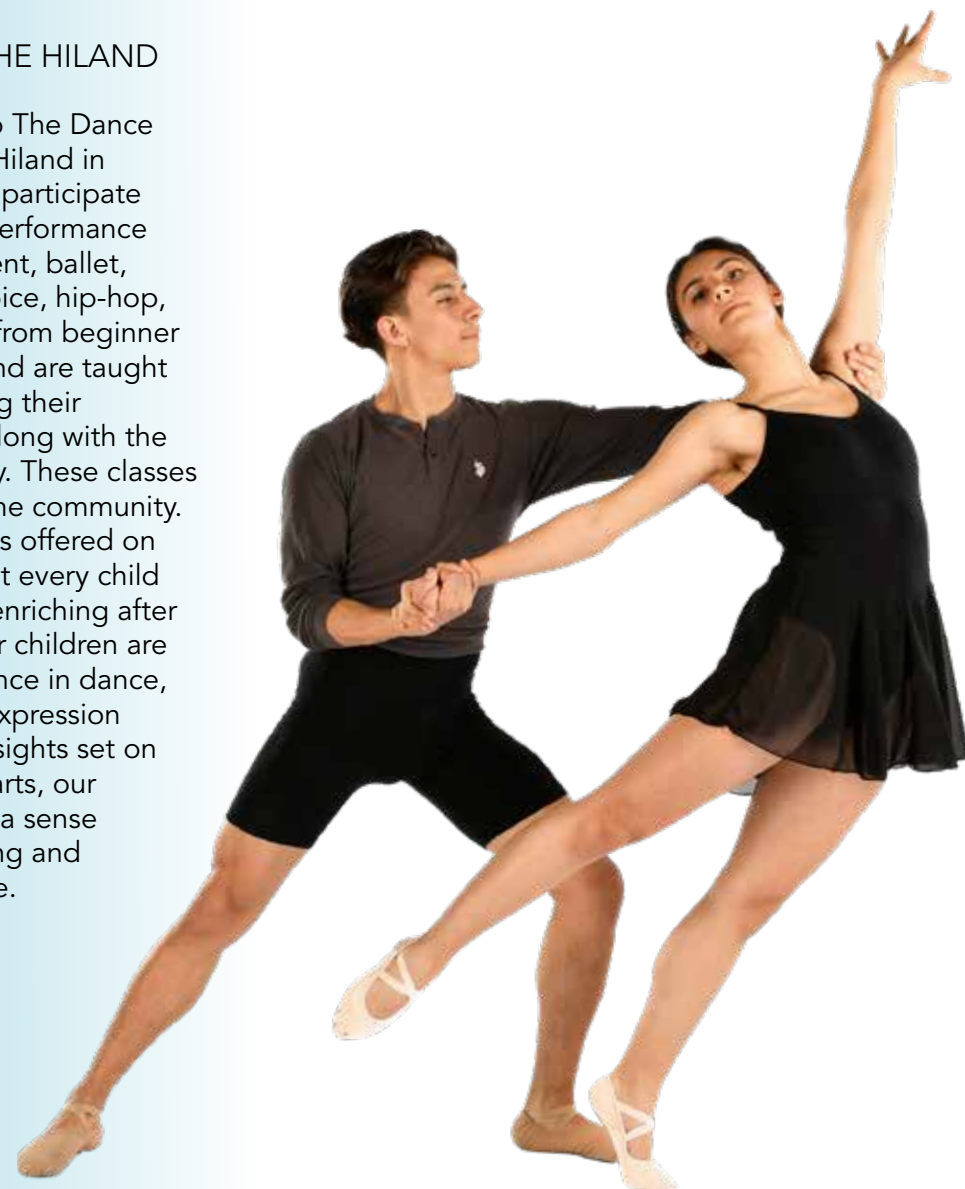
Our traveling Residency team brings music and dance to underserved children in 23 rural and urban communities in all corners of New Mexico. The Residency team lives in each community for one to three weeks, conducting daily Outreach classes that culminate in exciting, interactive performances in gyms and theaters for their friends and families. Schools, dancers, and communities look forward to NDI New Mexico's visit each year.



Afterschool

THE DANCE BARNs & THE HILAND

Children ages 3-18 come to The Dance Barns in Santa Fe and The Hiland in Albuquerque each week to participate in high-quality dance and performance training in creative movement, ballet, modern dance, jazz, tap, voice, hip-hop, and theater. Classes range from beginner to pre-professional levels and are taught by inspiring instructors using their technical dance expertise along with the NDI New Mexico pedagogy. These classes are open to all children in the community. Tuition for these programs is offered on a sliding scale, ensuring that every child has the opportunity for an enriching after school experience. Whether children are exploring their first experience in dance, taking classes for creative expression and exercise, or have their sights set on a career in the performing arts, our afterschool programs build a sense of achievement in a nurturing and noncompetitive atmosphere.



Teaching Excellence®

NDI New Mexico is committed to developing highly trained instructors to deliver our award-winning pedagogy to children across the state. Instructors are the backbone of our programs, and their expertise is vital to a child's engagement and success. Our Teaching Excellence® workshop is a critical building block for training our instructors to develop the skills needed to conduct fast-paced, dynamic, and engaging classes. During the two-week intensive, participants work with children alongside our own master teachers and are immersed in hands-on training in NDI New Mexico's highly engaging, fun and athletic teaching methodology.

Hip to Be Fit®

BE HEALTHY is one of our Core Four messages for how to be excellent in everything you do. We are committed to helping our students get fit. NDI New Mexico's HIP to Be Fit® curriculum is embedded in all our programs and teaches the importance of exercising, making healthy lifestyle choices, and eating well to improve stamina, performance and endurance. Our goal is to make a positive impact on New Mexico's children and their families by helping them take care of their bodies, minds, and spirits.



Teaching Excellence®

TEACHER TRAINING WORKSHOP

**Check ndi-nm.org/teachingexcellence
for Summer 2020 Santa Fe Workshop Dates**

The Teaching Excellence® workshop immerses participants in our methodology, working with public school students to learn fast-paced, dynamic, and joyful teaching techniques.

One full Barbara Somerfield Scholarship to our two-week teacher training workshop will be awarded to an applicant who demonstrates great aptitude and enthusiasm!

We are seeking passionate individuals to join our team of instructors. Come learn the powerful methodology that engages and motivates children!



TO APPLY PLEASE VISIT:
www.ndi-nm.org/teachingexcellence

QUESTIONS:
liz@ndi-nm.org or 505.557.6046



Our Partner Schools

Albuquerque

21st Century Public Academy
Adobe Acres Elementary
Alameda Elementary
Alamosa Elementary
Cochiti Elementary
Comanche Elementary
East San Jose Elementary
E.G. Ross Elementary
Eugene Field Elementary
Hodgin Elementary
Inez Elementary
Janet Kahn School of
Integrated Arts
La Mesa Elementary
Los Ranchos Elementary
MAS Charter School
Mission Avenue Elementary
Montezuma Elementary
Mountain View Elementary
Osuna Elementary
Puesta del Sol Elementary
(Rio Rancho)
Reginald Chavez Elementary
Rudolfo Anaya Elementary
Sandia Base Elementary
Sandia Vista Elementary
(Rio Rancho)
Whittier Elementary
Zia Elementary

Northern NM

Alcalde Elementary
Chimayo Elementary
ET Salazar Elementary
Hernandez Elementary
James H. Rodriguez Elementary
McCurdy Charter School
Ohkay Owingeh
Community School
Pojoaque Valley
Intermediate School
Tony E. Quintana Elementary

Santa Fe

Acequia Madre Elementary
Amy Biehl Community School

Aspen Community School
Atalaya Elementary
Carlos Gilbert Elementary
El Camino Real Academy
Gonzales Community School
Kearny Elementary
Nina Otero Community School
Pecos Elementary (Pecos)
Salazar Elementary
Sweeney Elementary
Tesuque Elementary
Te Tsu Geh Oweenge Day School
Turquoise Trail Charter School

Residency

ALAMO-NAVAJO
Alamo-Navajo Community School

ARTESIA
Central Elementary
Grand Heights Early
Childhood Center
Hermosa Elementary
Roselawn Elementary
Yeso Elementary
Yucca Elementary

CHAMA
Chama Elementary
Tierra Amarilla Elementary

CUBA
Cuba Elementary

DULCE
Dulce Elementary

DEMING
Ruben S. Torres Elementary

GALLUP
Del Norte Elementary

HOBBS
Booker T. Washington Elementary
Broadmoor Elementary
College Lane Elementary
Coronado Elementary
Edison Elementary

Jefferson Elementary
Mills Elementary
Southern Heights Elementary
Stone Elementary
Taylor Elementary
Will Rogers Elementary

LAS VEGAS
Sierra Vista Elementary

LOVINGTON
Yarbro Elementary

MAGDALENA
Magdalena Elementary

RATON
Raton Intermediate School

ROSWELL
Pecos Elementary
Nancy Lopez Elementary
Missouri Avenue Elementary
Monterrey Elementary

SHIPROCK
Atsa Biyaazh Community School

SILVER CITY
Central Elementary
G.W. Stout Elementary
Guadalupe Montessori School
Harrison Schmitt Elementary
Jose Barrios Elementary
Sixth Street Elementary

SOCORRO
Cottonwood Valley Charter
Midway Elementary
Parkview Elementary
San Antonio Elementary

TAOS
Enos Garcia Elementary
Ranchos Elementary

WAGON MOUND
Wagon Mound Elementary

Timeline

Celebrating teaching excellence to nearly 120,000 children in the state of New Mexico since 1994

JACQUES D'AMBOISE
CONDUCTS RESIDENCIES
IN SILVER CITY AND
SANTA FE



'90

NORTHERN NEW MEXICO
PROGRAM BEGINS
ALBUQUERQUE
PROGRAM BEGINS



'97

TEACHING EXCELLENCE®
TEACHER TRAINING
BEGINS
2,000 CHILDREN
SERVED ANNUALLY



'99

'03

AWARDED FEDERAL
GRANT FOR HIP TO
BE FIT® ESTABLISHING
EVALUATION, NUTRITION
CURRICULA, AND
TEACHER TRAINING



'05

RENOVATION OF
THE HILAND THEATER
IN ALBUQUERQUE
COMPLETE
7,000 CHILDREN
SERVED ANNUALLY



'12

AWARDED NEW MEXICO
ETHICS IN BUSINESS FOR HIGHEST
ETHICAL STANDARDS, INTEGRITY,
AND FOR IMPACTING QUALITY OF
LIFE IN THE STATE



'16

'19



FIRST YEAR-LONG
PROGRAMS
FOUNDING ARTISTIC
DIRECTOR CATHERINE
OPPENHEIMER
INCORPORATES
NDI NEW MEXICO
AS A 501(c)(3)
100 CHILDREN SERVED



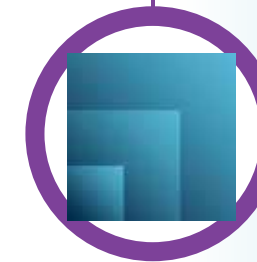
A NEW HOME FOR
NDI NEW MEXICO AT
THE PINK CHURCH



RECIPIENT OF THE
PRESIDENT'S
COMING UP TALLER
AWARD
GRAND OPENING OF
THE DANCE BARN
IN SANTA FE



6,000 CHILDREN
SERVED ANNUALLY



RECOGNIZED BY THE
WALLACE FOUNDATION
FOR EXCEPTIONAL ARTS
PROGRAMMING FOR
TEENS AND TWEENS



★★★★
AWARDED FOUR-
STAR CHARITY
NAVIGATOR RATING
FOR 5TH YEAR IN A ROW
8,400 CHILDREN
SERVED ANNUALLY

OUR 2020 Graduates

CONGRATULATIONS TO OUR CELEBRATION TEAM GRADUATES FROM ALBUQUERQUE, NORTHERN NEW MEXICO, AND SANTA FE!

From your first In-School program at your elementary school through your participation on the Super Wonderful Advanced Team (SWAT) and Celebration Team, you have shown commitment, tenacity, and teamwork as you endeavored to exemplify excellence. Your years of dedication to our Core Four values – WORK HARD, DO YOUR BEST, NEVER GIVE UP, and BE HEALTHY – have given you the tools you need to succeed in life. We are very proud of each of you, and know that you will carry the memories and friendships you have made through NDI New Mexico into your futures.



“ I learned that I could do
anything I put my mind
to and to love myself for
who I am. - Rayna Baca ”

Albuquerque



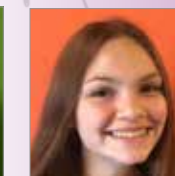
Ava Armijo
Jefferson Middle
School



Rayna Baca
El Camino Rael
Academy



Aiden Brace
Hayes Middle
School



**Michaela
Braeutigam**
Madison Middle
School



**Eieomana Zunie
Campbell**
Wilson Middle
School



**Giselle
De La Tour**
Jefferson Middle
School



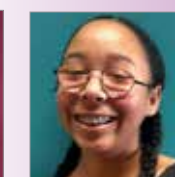
Abigail Durrett
Lincoln Middle
School



Rose Durrett
Lincoln Middle
School



**Marcos
Granados**
Albuquerque
Bilingual Academy



**Lyric Herrera
Jeffers**
Jefferson Middle
School



**Lorena Madrid
Larranaga**
Jefferson Middle
School



**Allison
Markowitz**
Cleveland
Middle School



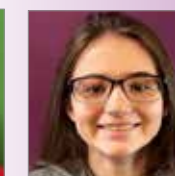
Edgar Marquez
Washington
Middle School



**Stephanie
Moreno**
Grant Middle
School



Analisa Ortiz
Cottonwood
Classical Prep



Austyn Ragland
Grant Middle
School



Elisiana Rimbert
Jimmy Carter
Middle School



**Joylissa
Rodriguez**
Harrison Middle
School



**Esperanza
Urban**
Cottonwood
Classical Prep



Ilias Saiz
Taft Middle
School



Ingrid Valdez
Jefferson Middle
School

“ NDI has taught me perseverance and
the importance of having a supportive
team. These are skills that I will use
for the rest of my life.

- Lorena Madrid Larranaga ”

“My Celebration teammates have taught me to always do my best. They showed me you can have a lot of fun while learning. They’ve shown me friendship and loyalty. - Athena Manzanares”



Francisca Bobadilla
Carlos Vigil Middle School



Andrea Chavez
Carlos Vigil Middle School



Anelia Holterman
Carlos Vigil Middle School



Lilah Hughes
Pojoaque Valley Middle School



Athena Manzanares
Carlos Vigil Middle School



Anika Montoya
McCurdy Charter School



Jonathyn Montoya
Española Valley High School



Elisa Noches
McCurdy Charter School



Nathaniel Romero
Carlos Vigil Middle School



Syana Sanchez
Los Alamos Middle School



Dominic Sandoval
Española Valley High School



Karina Trevizo
Carlos Vigil Middle School



Dilia Trujillo
Carlos Vigil Middle School

“NDI gave me a sense of joy and happiness and now it means so much more. It’s not just dance, I’m part of a family. - Dominic Sandoval”

Northern New Mexico



“My NDI teachers have taught me that nobody’s perfect and everyone makes mistakes, but to never give up and keep trying your hardest! - Gisella Davis”



Ben Annon
St. Michael's High School



Karla Bencomo
El Camino Real Academy



Jasmine Chavez-Vallin
El Camino Real Academy



Darwin Cruz
Ortiz Middle School



Anam Daniels
Santa Fe High School



Gisella Davis
Milagro Middle School



Irma Diaz-Sena
Desert Academy



Mariana Escobedo
Santa Fe High School



Neftali Guzman
Ortiz Middle School



Sophia Hernandez
Santa Fe High School



Maia Hillock-Katz
Camino de Paz School and Farm



Kayla Valerio Lopez
Ortiz Middle School



Andrea Marquez
El Camino Real Academy



Lindsey Martinez
Tierra Encantada Charter School



Natalie Lorenzo Meraz
El Camino Real Academy



Michelle Molina
El Camino Real Academy



Ian Oakeley
Turquoise Trail Middle School



Julieta Rios
Milagro Middle School



Alyssa Ruiz
Gonzales Community School



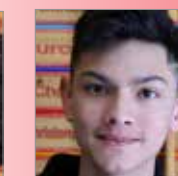
Sofia Silva
Gonzales Community School



Aiden Taylor-Ault
Gonzales Community School



Nathan Tercero
New Mexico School for the Arts



Ramiro Miranda Urias
Mandela International Magnet School



NDI New Mexico has received the coveted four-star rating for five years in a row indicating public trustworthiness through accountability, transparency, and concrete results.

Ways to Give

A gift to NDI New Mexico can be made in a number of different ways — as a bequest, as a memorial or tribute to another person, as an online donation, or as a contribution to the NDI New Mexico endowment. All charitable donations help children achieve success and are tax-deductible.

DONATE ONLINE

www.ndi-nm.org/donate

HONOR AND MEMORIAL GIFTS

Make a tribute gift in honor of a joyous occasion or in memory of a loved one

JOIN A GIVING CIRCLE

Circle of Friends: \$1-\$999

Founders' Circle: \$1,000-\$9,999

Circle of Excellence: \$10,000-\$99,999

Pillars of Excellence: \$100,000+

FOUNDATION AND CORPORATE PARTNERS

Grants and sponsorship opportunities support programs and events

GIFTS OF SECURITIES

Common stocks and mutual funds

DONOR ADVISED FUNDS AND UNITED WAY

Recommend or designate a gift to support NDI New Mexico programs

PLANNED GIVING

Bequests, Charitable Gift Annuities and Trusts, or IRA Rollovers

MATCHING GIFTS

Many employers will match gifts or volunteer hours donated

NDI NEW MEXICO ENDOWMENT

Support NDI New Mexico's financial security and initiatives for today and tomorrow

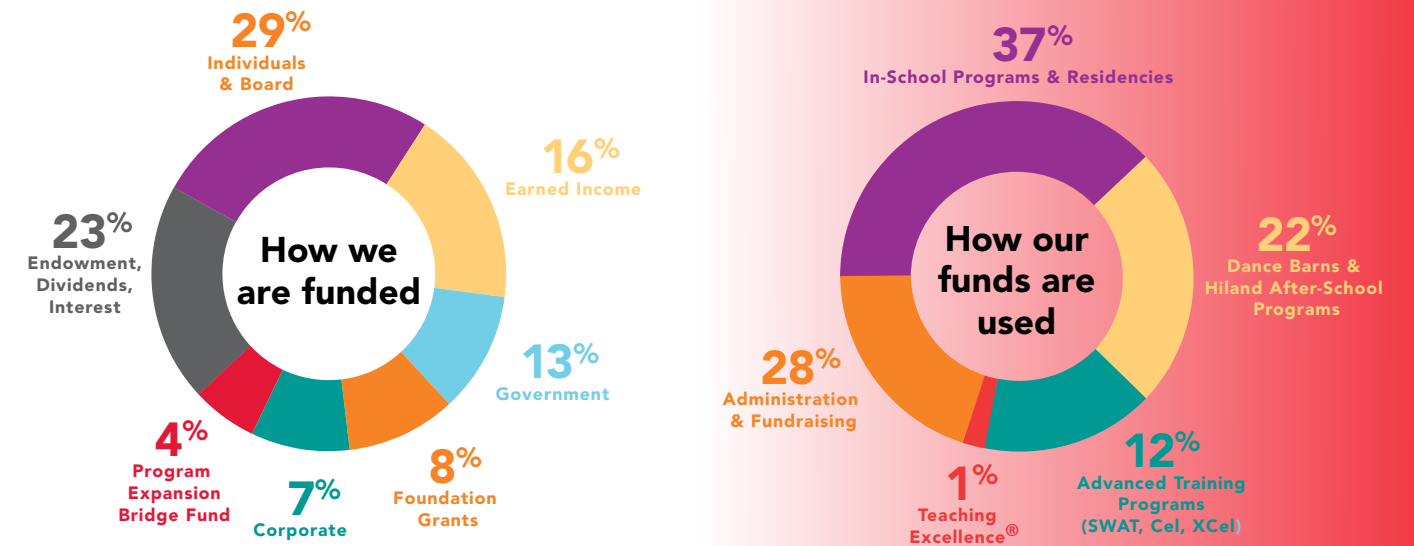
MONTHLY GIVING

Sustain NDI New Mexico programs with year-round impact

For more information or to make a donation, please contact Mary Gulledge, Director of Advancement, at 505.557.6044.



Every donation makes a difference that can last a lifetime to a child.



Your generous investment in NDI New Mexico provides access to excellence for thousands of underserved children and creates opportunities for youth in our state to build better futures.



Silver Sneakers LEGACY SOCIETY

YOUR LEGACY. THEIR FUTURE. YOUR DANCING FOOTSTEPS LAST FOREVER.

Thanks to the commitment and planning of our generous Silver Sneakers Legacy Society members today, children in New Mexico will continue to be inspired to work hard, do their best, never give up, and be healthy for many generations to come.

The Silver Sneakers Legacy Society honors the foresight of individuals who include NDI New Mexico in their wills or through planned giving. We extend our gratitude to Silver Sneakers Legacy Society members for enhancing NDI New Mexico's long-term financial stability through their generous commitments. Every legacy gift ensures we can continue to change children's lives, now and in the future.

WE THANK OUR SILVER SNEAKERS MEMBERS:

Anonymous
Ann N. Aceves
Charmay Allred
Maria Arancio & Robert Berry
James Baker
Nancy A. Baker
Russell Baker
Holly Barnett-Sanchez &
David Foster
Beth Beloff & Marc Geller
Jean & John Berndt
Marlene & John Bingaman
Nancy & Cliff Blaugrund
Julia B. Bowdich
Jan & John Burnham
Louise Campbell-Tolber &
Steven Tolber
Dianne Chalmers Wiley &
William Wiley
Elaine & Wayne Chew
Cynthia & Alan Coleman
Kenneth Conwell II

Mark Corey
Krys & Phil Custer
Michael D'Alfonso
Sally Davis & Richard Kozoll
Sande Deitch
Cynthia Delgado & John Crant
Valerie T. Diker 🐾
Linda DiPaolo Love &
Stephen Love
Diane Doniger 🐾
Peter Doniger
Susan Dubin
Sally & Edward Evans
Pamela Fischer & Richard Fogel
Diane Fisher
Cezanne "Zizi" Fritz
Gail & Jim Goodwin
Hurley Hanley
John+ C. Herklotz 🐾
Michael B. Jeffers
Medora & Jim Jennings
Barbara & Jerry Landgraf

Marietta Leis & David Vogel
Tom Linton
Beth+ & Steve Moise
Barbara & Chuck Moore
Leslie Nathanson Juris &
Hervey A. Juris
Brenda & Thomas Nickoloff
Catherine Oppenheimer 🐾
Dolores+ and
Ambassador Frank+ Ortiz 🐾
Jan Paulk
Mara and Charles+ Robinson
Julia Rose
Ann+ Rutledge
Don Shina & Kevin Waidmann
Katie & Andy Thompson
Charles Thompson, Jr.
Garrett Thornburg 🐾
Susann & Paul+ Weaver
Eileen Wells
Gretchen K. Williams
May & Charlie Wilson

🐾 Founding Member + Deceased

Spotlight ON NANCY AND CLIFF BLAUGRUND

The decision to become involved with NDI New Mexico was easy for Nancy and Cliff Blaugrund. Nancy, who is now an Emeritus NDI Board Member, credits another NDI Board Member, Medora Jennings, with introducing her to the organization through performances and classroom visits when it was first getting started in Albuquerque 23 years ago! Nancy also notes that their deep commitment truly began when NDI Board Member Julie Bowdich urged her to be more involved in supporting and promoting the organization by joining the Board of Directors.



"Engagement with NDI starts with the smiles on the faces of the children in public-school classrooms, the ripple effect of their joy, and the impact it has on the whole family."

Nancy and Cliff appreciate that students come from a variety of backgrounds, and they are impressed with the pride that family members take in watching their children perform.

Building upon the ways Nancy and Cliff contribute to NDI by becoming Silver Sneakers Legacy Society members with a gift in their will was inspired by their love for the program, for how well run the organization is, and for the impact that it has on the whole community. They feel very gratified knowing that their legacy gift will be used to transform the lives of the children who participate in NDI New Mexico programs well into the future.

THANK YOU TO OUR Supporters

NDI New Mexico is grateful for every gift we receive! Contributions to our various funds - annual program and event support, and capital and endowment gifts — are recognized from the time period **March 15, 2019 to March 14, 2020**. Please know that every effort has been made to present a complete and accurate list of our supporters. We apologize for any errors or omissions and appreciate your corrections.

CAPITAL SUPPORTERS

Capital Gifts allow NDI New Mexico to build dreams for more children. Through the renovation of our Hiland Theater in Albuquerque, and the upcoming expansion of our Dance Barns campus, we thank the following donors for their generosity:

Jean & John Berndt
Diane & Peter Doniger
State of New Mexico

ENDOWMENT SUPPORTERS

Endowment funds are important to the sustainability of NDI New Mexico programming. These foundational gifts support the financial health of the organization and keep many programs going in perpetuity. We thank the following friends for their foresight and care:

Anonymous
Connie & Paul Cassidy
Diane & Peter Doniger
Barbara Ettinger & Sven Huseby

Beth Beloff & Marc Geller
Gail & James Goodwin
Barbara⁺ Somerfield &
John Guffey
Barbara & Jerry Landgraf
Franci Neely
Ann⁺ Rutledge
Celia Culver Rutt & Jim Rutt
Pamela Saunders-Albin
Joe Schepps
Nancy Zeckendorf

PILLARS OF EXCELLENCE \$100,000 +

City of Albuquerque - Family &
Community Services
Delle Foundation
William Randolph Hearst
Foundation
Hobbs Municipal Schools
New Mexico Department
of Health
Thornburg Foundation

CIRCLE OF EXCELLENCE PLATINUM CIRCLE \$50,000 - \$99,999

Anonymous
Anonymous Foundation

Diane & Peter Doniger
Nickoloff Family Foundation
Catherine Oppenheimer

GOLDEN CIRCLE \$25,000 - \$49,999

Anonymous
Beloff & Geller Family Fund,
Santa Fe Community Foundation
Jean & John Berndt
Buckaroo Ball Foundation
Andrew Davis, The Shelby Cullom
Davis Charitable Fund, Inc.
Valerie T. & Charles Diker
Excellent Schools New Mexico
The Fasken Foundation
Maria & Ed Gale
General Mills
Gail & James Goodwin
Lineberry Foundation
The Millstream Fund
Santa Fe Community Foundation
Thornburg Investment Management
United Rentals
Eileen Wells
XTO Energy

⁺Deceased

ANNUAL FUND SUPPORTERS

SILVER CIRCLE \$10,000 - \$24,999

Anonymous
Charmay Allred
Anchorum St. Vincent
Avalon Trust Company
Marlene & John Bingaman
Nancy & Cliff Blaugrund
Julia B. Bowdich & John A. Carey
Connie & Paul Cassidy
Dianne Chalmers Wiley &
William Wiley
City of Santa Fe Children &
Youth Commission
Sande Deitch
Susan & Ron Dubin
Enterprise Bank & Trust
Celia Lipton Farris & Victor W.
Farris Foundation Fund, Santa Fe
Community Foundation
Paula & Steven Fasken
First National 1870
Diane Fisher
Freeport-McMoRan
Copper & Gold
Garcia Automotive Group
Gary Goodman Donor Advised
Fund, Jewish Community
Foundation of New Mexico
Peggy & Tom Hubbard
Shannon & Patrick Hurley
Italian Festivals of New Mexico
David Lamb
Barbara & Jerry Landgraf
Yvonne & Charles Mendez
Larry H. Miller Charities
Mookie & the Road Gang
The Mystery Lady of Santa Fe

N3B Los Alamos
Leslie Nathanson Juris &
Hervey Juris
National Endowment for the Arts
Laurie Overton & Tom Linton
PNM Resources Foundation
Presbyterian Santa Fe
Medical Center
Santa Fe County Community
Services Department
Lyn Schmidt
Beth & Richard Schnieders
Sandy & Bruce Seligman
Sherpa Fund, Santa Fe
Community Foundation
Fred & Eve Simon
Charitable Foundation
Mindy & Simon Teolis
Melanie & Ed Thorne
Linda Weil
Wells Fargo Bank of New Mexico
Helen Wertheim
Western Sky Community Care
May & Charlie Wilson
Sandia Foundation's Hugh
& Helen Woodward Fund,
Albuquerque Community
Foundation

FOUNDERS' CIRCLE \$5,000 - \$9,999

Anonymous
Cindy Aloï & Irwin Sugarman
Linda & Carl Alongi
Adelmo & Becky Archuleta
Bank of Albuquerque
Bank of America Charitable
Foundation, Inc.

Suzanne Barker & James Baker
Holly Barnett-Sanchez &
David Foster
Laurie Bauman Arnold &
Steve Arnold
Anne & Jeff Bingaman
Box Studio, LLC
Marcie Brooks & John Delamater
Markeeta Brown
Mr. Joseph M. Bryan, Jr.
Louise Campbell-Tolber &
Steven Tolber
Century Bank
CHRISTUS St. Vincent
Medical Center
City of Santa Fe - Arts Commission
Cynthia & Alan Coleman
Continuous Pathways Foundation
Ann DeHart & Robert Milne
Linda DiPaolo Love & Stephen Love
Olga Echevarria &
James Hutson-Wiley
ECMC Foundation
Jeana & Robert Efroymsen
Duke City Commercial LLC
Kelcy & Cole Flanagan
Susan Foote & Stephen Feinberg
Peter Frank
Mark H. Gilman
Carolina Girimonte
Valerie & Bud Hamilton
Family Fund, Santa Fe Community
Foundation
Hancock Family Foundation
Jaymini & Aleem Hasham
Klinger Constructors, LLC
Louie Kulpa
Marietta Leis & David Vogel



Rita Longino & Roy Soto
Los Alamos National Laboratory
Robin & Meade Martin
Ingmarie & Tim McElvain
Bill Miller
Beth* & Steve Moise
Barbara & Chuck Moore
NAI Maestas + Ward
New Mexico Arts, a Division of
the Department of
Cultural Affairs
Presbyterian Medical Services
The Rea Charitable Trust
Ann Reinking
Suzannah & Marshall Sale
Pamela Saunders-Albin
Barbara Schmider
Allan Shedlin
Southwest Capital Bank
Sutin, Thayer & Browne Lawyers
Katie & Andy Thompson
Tijeras Foundation
U.S. Bank Foundation
Vintage Albuquerque
Washington Federal
Veronica A. Watson
Meg Wilburn & Ted Kreifels
Cheryl Willman & Ross Zumwalt

\$2,500 - \$4,999

Anonymous
Ann Aceves Donor Advised Fund,
Santa Fe Community Foundation
AIC General Contractor
Aon Risk Solutions
Karen J. Armitage & John Curl
Russell Baker & Mark Corey
Barker Family Properties
Barker Welfare Foundation
BBVA Compass
BBVA Compass Foundation
Beezy & Steve Bing

Suzanne* Brandt
Victoria & Roy Bridges Family
Fund, Santa Fe Community
Foundation
Jan & John Burnham
Becky & Todd Burt
Leslie Carpenter
Charles Stephen & Co. Inc.
E. Lovering Cheston &
Eugene M. Cheston Jr.
CliftonLarsonAllen LLP
Jan & Tom Collett
Shane Cronenweth
Krys & Phil Custer
Cynthia Delgado & John Crant
Dion's Pizza
Candy & Charles Easterling
Ardith Eicher & Dave Rashin
Fidelity Investments
Fix My Roof LLC
Sharon & Scott Fletcher
Joyce & Earl Godwin
Donna & John Goodwin
Guadalupe Credit Union
Mary & Allen Gullledge
HUB International Insurance
Services
Katz Ahern Herdman &
MacGillivray, PC
The DuBose & Dorothy Heyward
Memorial Fund
Penelope Hunter-Stiebel &
Gerald Stiebel
Cherie Kusman Gamble &
Michael Gamble
L & P Building Supply
LEF Foundation
Donna Lefevre
Nance & Ramon Lopez
The MacDonald Family
Dee Ann McIntyre
Roxanna Meyers & Stanley Mount

Michelle Midyette
Mayo Miller King & Harold King
Modrall Sperling Law Firm
Molzen-Corbin & Associates
Montgomery & Andrews Law Firm
Kate & Robert Moss
Moss Adams, LLP
Brenda & Thomas Nickoloff
NM Bank & Trust
Deb & Tom Novak
Kay Onstead
Jim Pavitt & Carolyn Stettner
Ashlyn & Dan Perry
Sonya Priestly & Art Gardenswartz
Kathleen & John R. Pugh
Jennifer Ramo & David Kutz
Reaud Charitable Foundation
Kathleen & Robert Reidy
Sandra & Clifford Richardson, III
Carol & Richard Rinehart
Rio Grande Credit Union
Rotary Del Norte Foundation
Jessica & Yolanda Roybal
Rheba Rutkowski
Pamela & Rick Salmon
Salmon Hauger Wealth
Management Group of Wells
 Fargo Advisors
James R. Seitz Jr.
Don Shina & Kevin Waidmann
Helene Singer-Merrin
Joyce & Ray Smith
Barbara & Mark Steinberg
Carrie & Brian Terrell
Tomasita's Albuquerque
U.S. Bank
U.S. Eagle Federal Credit Union
Jabeen & Firoz Vagh
Linda Vanzi
Dora Williams
Woods Design Builders, Inc.

\$1,500 - \$2,499

Anonymous
Deanna Archuleta & Tom Rothfeld
Tamara Bates
Ellen & Paul Biderman
Julie & Phil Bonello
Judy & David Buck
Kathy & Shelley Burt
Jennifer & Brian Charlton
Kenneth Conwell II
Toma & Joe Corda
Michael D'Alfonso
Ken DeBettignies
Peggy & J.R. Dotson
Gregory Edwards
Susan Feil
Pamela Fischer & Richard Fogel
Deborah Fritz
Carol Fry Ray
John S. & Chesney D. Gulas
Charitable Fund, Santa Fe
Community Foundation
Carey & John Gwynn
Rhonda & Dave Hill
Julia Hosford Barnes &
Will Barnes
Brenda Howard
Innovate + Educate
Karen Kahn & Carlton Caves
Linda Krull
Ted Lambert
Pat Marcus Curtis & Bob Curtis
Julie Martinez & Patrick Samora
Christine & Drew McDermott
Bill & Patty McGillicuddy
Lynn McKelvey & Glenn Dickter
Stana & Daniel McKittrick
Nancy Ann Mellen Foundation
Karen Molzen
Sandy & Russell Osterman
Ana & Doug Ottersberg
Percent Pledge, The Giving
Back Fund
Carol Prins & John Hart
RBC Capital Markets
Rio Arriba County
Marjorie & Steven Rogers
Cynthia Sanchez & Kerry Lee
Anna & Joe Santangelo
Molly & Fred Seibel
Hirak Sen
Marian Silver
Sotheby's International Realty

P.K. Strong
Studio Southwest Architects
Western New Mexico
University
Karen Wolfe-Mattison
Sharon & Sheldon Wright
Anne & Vince Yegge
Janet Youngberg
Judy Zanotti & David Davis

\$1,000 - \$1,499

Anonymous
The Abeles Foundation,
Richard A. Ables,
Foundation President
Kathy & Rick Abeles
Peggy & David Ater
John & Heather Badal
Nancy A. Baker
JoAnn & Bob Balzer
Laurence Barker
Peter Bastone
Mary & Len Beavis
Mary Behm Esq.
Natalie & Barry* Beller
Emily & Mark Benak
Albuquerque Community
Foundation, Effective
Families Fund
Amy Bianco & John Whysner
Hima Bindu & Chad Smelser
Brent Black
Jamai & David Blivin
Helen Brooks
Sarah & Doug Brown
Diane Buchanan & Rick Andrew
Gail & Lee Bush
Elaine & Wayne Chew
Joan & Richard Chodosh
Elaine Claire
Janis & Roy Coffee
Stock Colt
Crystal & Brian Conine
Phil Cook
Rebecca & John Cook
Cowgirl BBQ
Margaret & Richard Cronin
Marie Daeschel
Frances D'Alessio &
Jason Saslow
Susan & Conrad DeJong Fund,
Santa Fe Community
Foundation

Del Norte Credit Union
Angie & Larry Delgado
Teresa & Michael Delgado
Dale & Stephen Dunn
Eye Associates, Gerald &
Alice Rubin Memorial
Foundation Fund, Albuquerque
Community Foundation
Kelly & Steve Famiglietta
Robbi Firestone
Janet & Robert Ford
Cheryl Fossum Graham
Kelly Freeman
Karen Freeman
Gemini Rosemont
Johnnie Gillespie
Connie & Ambassador
David Girard-diCarlo
Bill & Susan Gloyd Family
Charitable Fund at Schwab
Charitable
Javier Gonzales
Rachel & Brandt Goodman
Marcia Gordon
Eileen Grevey-Hillson &
David Hillson
Joanie Griffin & Rob Durham
Gretchen Guard
Gubelmann Family Foundation, Inc.
Aline Harris-Ellis & Terry Ellis
Scott & Meaghan Hindman
Catherine & Drew Hoffman
Judy & Sam Honegger
Marney & Dave Hupper
Rosalyn Hurley
Nancy & Paul Anthony Jacobs
JenkinsGavin, Inc.
Jan & William Keleher
Nancy King
Margarita & Thomas J. Kintz Fund,
Santa Fe Community Foundation
Susan & Scott Leemaster
Ella & Sonny Leeper
Barbara G. Lenssen &
Keith Anderson
Ann & Mark Livingston
Edward Lujan
Carmen & Ben Ray Lujan
Maestas Development Group
Pat Marcus Curtis & Bob Curtis
Paul & Ashley Margetson
Jeanne & Rod Martenis
Phil Martin



Jesse Martinez
 Cathy & Sherman McCorkle
 John McDermott
 Millie W. McMahon
 Tracey & Timothy L. Meisenheimer
 Judy & Howard Mock
 Cynthia & David Montoya
 Lynn Mullins
 Network for Good, Anonymous
 New Mexico Gas Company, Inc.
 Anita Ogard & George Strickland
 Elizabeth Olten & Clinton Marrs
 Marka & David Otoski
 Karen Pace & Kenna Cantrell
 Nikki & Marcus Palermo
 Carmen Paradis & Brian McGrath
 Jan Paulk
 The Plaza Cafe
 Tina & Lee Poper
 Railyard Urgent Care
 Roberta & Barry Ramo
 Susan Roth & Steve Meyer,
 Santa Fe Community Foundation
 Caroline Russell & Jeff Thomas
 Sandia Laboratory Federal
 Credit Union
 Joe Schepps
 Mary Sloane &
 Andrew Wallerstein
 Donna Jean Smith
 Joan & Robert Sobel
 Sommer, Udall, Hardwick,
 Ahern & Hyatt, LLP
 Pat & Greg Spencer
 Stevens, Thompson &
 Sweets Group
 Kazukuni Sugiyama & David Frank
 Jean Ann & Duffy Swan
 Richard Tang
 Luci Tapahonso & Robert Martin
 Thompson Machine
 Steve Tognoni
 John Trotter
 Katherine & Owen Van Essen
 Angelina Vera & Raphael Shapiro
 Mary Wells & John McCabe
 Amy & Jim Weyhrauch
 Newton White
 Peter Winograd
 Sharon Woods
 Zia Trust, Inc.

CIRCLE OF FRIENDS

\$500 - \$999

Anonymous
 ABQ Lodge No. 1517
 Jane Alexander
 Matthew Allen & Robert Grilley
 American Legion Post #1
 Gaming Charity
 James Aragon
 Stephanie & Leonard Armstrong
 Debra Ayers & Greg DePrince
 Marquita & Andrew Baca
 Melissa & Patrick Barry
 Candace & Ben Beeke
 Karen & Steven Berkowitz
 Maria & Bob Berry
 Rod Boren Family Fund, Santa Fe
 Community Foundation
 Lauren & William Bowen
 Tooley & George Boyden
 Judy Broughton & Ralph Tingle
 Dennis Calamusa
 Carolyn Callaway
 Nancy Casale & Michael Wayman
 Ruth Castrodad & Angel Urbina
 Lynn & George B. Chelius III
 Carol & John Cochran
 Phillip Coombs
 Michelle & Bill Coons
 Mr. & Mrs. Finley Corkern
 Kathy Davis & Robert Wengrod
 Linda & Bob Davis
 Frances Diemoz & Alan Webber
 Dollars4Schools
 Sandy & Sam Donaldson
 Karen & Bob Drewry
 Robert Elliot
 Caroll & Richard Follingstad
 Jane & Norm Gagne
 Scout & Jim Gay
 Julia & Joe Golden
 Nancy Haines
 Lisa Hamill
 Valerie & Bud Hamilton
 Lisa & Robert Hartmann
 Robin & Tom Hines
 Hoffman Family
 Richard Honig
 Melody Hunt
 John Johnson
 Janine Kennedy & Don Manning
 Doe Kim

Chauna & Tyler King
 Maria & Larry Koren
 Leean Kravitz
 Carol H. & Robert D. Krinsky
 Marcia & Tim Lenihan
 Carla & Roger Levien
 Rebecca & Joshua Levinson
 Sarah & Andy Lim
 Ida Lujan
 Linda MacDonald
 Marsha & Darrell Majors
 Sara & Clovis Martin
 Charlotte Martinez
 Diane & Ronald Martinez
 Karin & Brian McMahon
 Tom Moore
 Maryann & Brent Moore
 David Morris & Terry Sweeney
 Arlyn & Fred Nathan
 Winona & Ralph Nava
 Mary & Dick Nordhaus
 Andrew Ortega
 Christina Price & Connor Browne
 JoAnn Reiter & Michael Tobiason
 Matt & Teresa Rembe
 Ann & Russell Rhoades
 Heather Robertson
 Santa Fe Chamber Music Festival
 Kelly & Anne Shannon
 Sandra Shellum
 Carolyn Silver
 Paul & Susan Silverman
 Robin Smith
 Elaine & Ron Solimon
 Jessica & Jonathan St. Cyr
 Marilyn & Stan Stark
 Dan Storper
 Kathleen & Andy Strebe
 Randy & Margaret Talbot
 Temple Lodge No. 6 Charity Fund
 Peter Thomas
 Connie & Nat Troy
 Greg Volda
 Diana & Tom Weber
 David Webster
 Deborah & Scott Wegeleben
 Ann & Arthur Weinstein
 James West
 Wilcox & Myers, P.C.,
 Independent Community
 Foundation
 Brandon Writtenberry

\$300 - \$499

Anonymous
 Kristina Alley & Tim Farrell
 Margarita & Michael Boule
 Lilia Chacon
 Misty & Adam Ciepiela
 Revathi & Russ Davidson
 Dave, Claire, Olivia, &
 Michele DeCroix
 Don Dwyer
 Lisa Enfield & Paul Bardacke
 Marcia Fernandez
 Pat & Michael French
 Jane & Charles Gaillard
 Robert Geller
 Rosie Gonzalez & David Rogers
 Lainie & Mac Grimmer
 Virginia Grossetete
 Debbie Johnson
 Sarah Kotchian & Robert Nellums
 Armine & Lavi Malhotra
 Maudie McCormick
 Elizabeth & Martin Miller
 Marjorie Miller-Engel &
 Robert Engel
 Bobbie & Luis Montero
 Patty & Jamie McGrath Morris
 Agnes Noonan
 Pascal Pierme
 Caroline & Martin Proyect
 Natasha & Gabe Rippel
 Maureen Sanders
 Melissa Seligman & Matt Cano
 Bobbi Smith
 Nancy Solis Rodriguez &
 Jose Rodriguez
 Kurt & Cheryl Sommer
 South Broadway Neighborhood
 Association
 Sweetwater Harvest Kitchen
 Dwayne Trujillo

Arlene & Richard Vender
 Christa & Robert Woods

\$120 - \$299

Anonymous
 John L. Aab
 Albuquerque Academy
 Judith & Bill Alger
 Lisa & James Allen
 Katherine Arnold Reed
 Deena & Albert Atkins
 Margaret & Hugh Bell
 Julie C. Berman Charitable Fund,
 Jewish Community Foundation
 Los Angeles
 Rosvita Botkin
 Tom Boyden
 Kathy & Paul Bushnell
 Shellene & David Campbell
 Lori & Aaron Carlisle
 Pamela & Vic Chavez
 Chicago Style Pizza
 Elizabeth & Sid Childress
 John Clausen
 Mary Coffman
 Tanya Cole
 Sheila Conneen & David Johnson
 Sally Corning & Ted Buchanan
 Juan Corpion
 Les & Eudice Daly
 Jamie & Richard Davidson
 Davis-Kozoll Donor Advised Fund,
 Albuquerque Community
 Foundation
 Molly & Michael Droge
 Joan Eaton
 Suzanne & Bill Ebel
 Stephanie Fabiani-Garcia &
 John Garcia
 Justin Ferate & Louis Newman
 Jamie Franks

Randall Galloway
 Leanna & Sovan Garcia
 Linda & Malcom Gardner
 Carole & James Garland
 Elisa Hamill
 Anita Harper
 Matt & Maggie Harshbarger
 Nancy Hollander
 Robert Hume
 Sherise & Adrian Jaramillo
 Connie & Terry Johnson
 Jane Marie Jones
 Judy Jones
 Allen & Gail Juris Donor
 Advised Fund
 Greta & Tom Keleher
 Bonnie & Hank Kelly
 Leslie Kenney
 Jennifer & Bob Kimball
 Ann & Kevin Lavine
 Yvette Stout Lyle & Bob Lyle
 Diana MacArthur
 Charles R. MacKay
 Jeanette & Edward Martinez
 Conley McCoy
 Charles Merz
 Karen Meyers
 JT Michelson
 Chris & Henry Morrison
 Erik Munoz
 New Mexico Oil & Gas
 Association
 Nan Newton & Dave Grusin
 James O'Neill
 Elaine Papafrangos
 Deborah Peacock & Nate Korn
 Martha & David Peercy
 Nancy & Ed Pierce
 Wendy & George Powell
 Julie Radoslovich &
 Raymond Badua



Mary & Alex Ross
 Mark Schechter
 Anne & Ralph Scheuer
 Patricia Shaffer
 Gloria & John Silver
 Gemtria St Clair & Rod Linguri
 Larry Strickland
 Anita Sum
 Susan & Larry Tackman
 Stacie Trujillo
 Larry Trujillo
 Ruth & Michael Wartell
 WashTub Laundromat
 Aelysia Webb
 Michael Weinberg
 Joyce & Alan Weitzel
 Crystal White Abeyta
 Barbara & Scott Whitefield
 Cheryl & Rollin Whitman
 Dean Willingham
 Caroline & Matt Willis
 Lisa & Tom Witt
 Miles Wolf
 Kathy & Mark Yarbrough

\$50 - \$119

Anonymous
 Lorin & David Abbey
 Catherine Akers
 Nicole Albright
 Venita Ames
 David Anderson
 Shirley Anderson
 Laura Araiza
 Janet Arsenault & Janet Graham
 Sarah Baiett
 Kate Baldrige & Ray Chung
 Lorri, Samuel & David Ballard
 Edward Barad
 Colin Barnett

Rosemary & Thomas Baxter
 Carrie Beaver
 Jennifer & Bryan Biedscheid
 Emily Blaugrund Fox
 Kathryn Blok
 Deborah Boldt
 Bravo Designs
 Samantha & David Brigman
 Maureen Brooks &
 Peter Wurzbarger
 Jeanne & Gig Brummell
 Susan Bruneni
 John Bruton
 Jackie & Tim Burns
 Jennifer Burt
 Christy & J.C. Butler
 Gordon Cagle
 Chris Cameron
 Colleen Carias &
 Barry C. Herskowitz
 Carlos Castanon
 Sheila Cepeda &
 Astrid Winterstein
 Jeanette Chavez
 Matthew Coan
 Joseph Coca & Savannah Wasco
 Carol & Dexter Coolidge
 Kerri & Pat Craddock
 Geri Cramer
 Christiane & Carlton Cuse
 Paul & Belinda Dahle
 Annelies Dahlquist
 Magdalena Dale
 Percell DeBerry
 Robert Duncan
 Early Iron Hotrods
 Peggy & Walter Eddy
 Linda & Richard Eitzen
 Lisa Ellis & Chris Young
 Jean Erickson

Sandra Escobar
 Elizabeth Faust
 Susan Feiner & Peter Whitman
 Kristy & Luis Fernandez
 Darlene Fernandez
 Jane & Michael Flax
 Pam & Bill Flesner
 Kate Fogarty
 Libby Foster
 Samantha Foutz
 Lisa Franzen
 Barbara & Robert Gallatin
 Maria & Frank Gallegos
 George & Nicki Garcia
 Shaylyn Garcia-Roy
 Farrah B. Gentry
 Ramey Giron
 Jewel Glavey
 Don & Diane Goldfarb
 Erin & Michael Gomez
 Gabi Gomez
 Sonia Gordon
 Helen Grevey & Jay Hertz
 Barbara+ Somerfield &
 John Guffey
 Julie Hanes
 David Harnick
 Ellen Hart
 Shelley Healy
 Christy & Howie Herbert
 Nohemie Hinojosa Lopez &
 Kermit Lopez
 Sue Hutchison
 Il Piatto
 Impact Printing
 Lisa Ivanovic
 Key & Jeanne Jones
 Shona Judge
 Benjamin Karmiol
 Joni Keller

Michael & Marianne Kelly
 Robin Kelly-Dreskin &
 Jeremy Dreskin
 Susan & Jack Kennedy
 Sam King
 Debbie & Patrick Kinsella
 Elise Parker Koenigsberg &
 Samuel Konigsberg
 KPMG
 Robert Labrum
 Carol Lang
 Zachary Lardy
 Mary Lebeck
 Frances Lopez
 Christopher Lopez
 Marilynn C. Lovett
 Loretta & Lucas Booker
 Karen Lynch
 Anna Marie Lynch
 M & M Graphics
 Gordon E. Macaulay
 Barbara MacFarlane
 Dave Mahan
 Heather Malcolm
 Jennifer Mallery & Jackie Rose
 Robert Maneely
 Jay Markowitz
 Elizabeth Marsek
 Edwina Marshall-Walker
 Lawrence Martine
 Angela & John Martinez
 Leslie & Jonathan Martinez
 Shona Martinez
 Kathleen & John McCarthy
 Diana & Kevin McDonald
 Sara McIntyre
 Dana McKee
 Jane McLaughlin
 Jake Mechenbier
 Elina Melara
 Stephanie Melton
 Holly Mitchell
 Laurie & Steven Moodie
 Lora Morton
 Tawnya Mullen
 Joanna Muth
 Lisa & Shane Muth
 James Narum
 Davia Nelson
 Network Realty LLC
 Keith Novak

Rebecca Okun
 Michael Ortiz
 William Osofsky
 Bertha Parada
 Kris & Jasper Parke
 Judith Parker-Markowitz &
 David Thomas
 Meredith Parks
 Alice Pasqualetti
 Janice & Stuart Paster
 Lee & Shay Patchell
 Marcia Power
 Kevin Powers
 Charles P. Price III
 Rebecca Pryor
 Evelyn & Ronald Quintana
 Crennan Ray
 Krishna Reddy
 Sharon & John Rehders
 Kelly Rivera
 Maria T. Rivera-Ramirez
 Shelley Roberts & Dewey Moore
 Mary Alex Rohleder
 Tricia Rosenberg
 Susan & David Rosprim
 Jewel Russell
 Sam Ruyle
 Ellen Ryan
 Jessica Sanchez
 Mary & Eugene Sanman
 Nicole Schneider
 Meryl & Ron Segel
 Rosalie & Stuart Sherman
 Sang & Naomi Shin
 Dianne & Ed Shinholser
 Claudia & Ron Short
 Rachel & Stephen Silva
 Patricia & George Simon
 Stephanie Slack
 John Smallwood
 Lea & David Soifer
 Sonya Burke
 Jaime Sowers
 Jessica Spray
 Tristyn Staal
 Dennis Sterosky
 Melisa Stoller
 Suzanne Stone
 Teresa Sweet
 Alex Tackman
 Bill Tallman

Linda Tellington-Jones
 Toni Temple-Lipton &
 Scott Temple
 Nathan Tercero
 Sarah & Steven Terry
 L. Christine Tesar
 Meredith & Edward Tinsley
 Sara & Kevin Tolman
 Kate & Chris Tomkins
 Jotina & Lee Trussell
 Mimi Twyman
 John Varoz
 Michele Wanner
 Susan Weymouth
 Donna & Fred Winters
 Hugh & Barbara Witemeyer
 Wanda Wood
 Cynthia Wootton
 Norberto Zamundo
 Claire Zoellert & Richard Klein

OTHER FRIENDS UNDER \$50

Anonymous
 Jason Anaya
 Lacey Anderson
 Amber Archer
 Juan Bermudo
 Salina Booker
 Suzanne Brace
 Victoria Brace
 Janis & Don Briggs
 Frances & Carlos Carreon
 Toyo Clayton
 Marisa Colwell
 Clara Cordova
 Zoe Cornwell
 Joan Daly
 Lee DeCoster
 Priscilla Del Aguila
 Casey Deree
 Winnie Devore
 Pedro Diaz
 Lindsay Dinkins-Eden
 Veronica Donaldson
 Jake Dougherty
 Yvonne Dougherty
 Lawrence Dupont
 Elizabeth Erickson
 Mary & Mark Feldman
 Emilia Fernandez



Leonardo Fernandez
Magali Fernandez
Brittany Foster
Karen Frank
Dr. & Mrs. Michael Freund
Andrea Garcia
Tracey Geer
Matthew Glass
Hailey Griego-Johnson
Barbara Grover
Carmen Guajardo &
David Ramirez
Kristin Healy
Javier Hernandez
Travis Holliday
Kelley Homistek
Brenda Iturralde & Jaime Varela
Iturralde
Jay Impellizzeri
Kevin Jackson
Nikki & Louis Kane
Laurie & Paul Kelson
Alexandra Marquardt
Jane Marsek
Roger A. Miller
Rita Montano
Michelle & Samuel Montoya
Mr. & Mrs. Robert Montoya
Victoria Mora
Brenda Neikirk
Network for Good, Anonymous
Maria Ortiz
Amanda Palacios
Amy Palladino
Augustus Pedrotty
Peoples Flower Shops
Amber Perezpegg
Melody Perez
Angelica & Alfredo Pichardo
Guillermina Quinones &
Manuel Ruiz
Chantel Ridley
Peggy & David Romero
Carmen Rosas
George Rosas
Linda Ross
Jessica Roybal
Sandia Base Elementary
Anna Sauer
Reyna Serrano & Hugo Cruz
Janet Simon

Nicole & Robin Strauser
Bonnie Strehlo
Diantha Swoboda
Norma Tarango
Christina & JT Thomas
William & Brynn Thornburgh
Camerina Treto
Mary Valcorta
Federico Varela
Xenia Velasquez & Melvin
Alvarenga
Jennifer Venegas
Julius Villanueva
Linda Visarraga
Stephanie Walther
Tammy Waters
Becky Wittenburg
Colleen Wootton
Betty Wright
Richard Young
Bob Zeller

**SUMMER SCHOLARSHIP
SUPPORTERS**

*Summer Scholarship funds
are raised to create summer
opportunities for our pre-
professional dancers in
Albuquerque & Santa Fe to
further their training outside of
New Mexico. The rising costs of
these programs are underwritten
in-part by the following donors:*

Anonymous
Ann N. Aceves
Russell Baker & Mark Corey
Laurie Bauman Arnold &
Steve Arnold
Jillian Bartley
Jean & John Berndt
Nicolette Bianchi
Hima Bindu & Chad Smelser
Kenneth Blasingame
Valerie Brooker
Karen & Robert Browne
Erin Cave
Cuddy & McCarthy, LLP
Sande Deitch
Linda DiPaolo Love &
Stephen Love

Diane & Peter Doniger
Molly & Michael Droge
Ardith Eicher & Dave Rashin
Anne Foster
Carol Fry Ray
Carole & James Garland
Sarah Gartner
Peggy Gaustad & Stuart Ashman
Alex Hanna & Yon Hudson
Adam Hoffberg
Il Vicino
Dottie Indyke
Christina & Ned Jacobs
Nancy King
David Lamb
Jean S. Lawton
Nancy Lehrhaupt &
John Oberhausen
Jennie Levi
Nance & Ramon Lopez
Olivia Love
Phil Martin
Julie Martinez & Patrick Samora
Jesse Martinez
Dee Ann McIntyre
Ronald Miles
Mayo Miller King & Harold King
Leslie Nathanson Juris &
Hervey Juris
Sarah & James Nickerson
Brenda & Thomas Nickoloff
Catherine Oppenheimer
Laurie Overton & Tom Linton
Dolores & Alan Overton
Caroline Russell & Jeff Thomas
Fritz Schlereth
Lyn Schmidt
Rick Scott
Virginia & Alexander Selvin
Jeff Szabat
Jeanne Timber
Mary Zemon

IN-KIND

Anonymous
AA Events & Tents
Albuquerque Business First
Albuquerque Journal
All World Travel, Inc.
The Alley
Audrey Derrell

Victoria & Susan Bruneni
The Candyman Strings & Things
Brett Chambers
Buffalo Wild Wings
The Cheesecake Factory
Cities of Gold
Cliff's Amusement Park
Cowgirl BBQ
Nancy Dennis
Audrey Derell
Desert Paper & Envelope
Diane & Peter Doniger
Electric Playhouse
Elite Dance
Pamela Fischer & Richard Fogel
galleryFRITZ
Frostburg Dance Academy
General Mills
Geo-Test
Gravity Park
Joanie Griffin & Rob Durham
Hakim Bellamy - Beyond Poetry
Harris Jewelers
High Point Grill
Hinkle Family Fun Center
Hotel Santa Fe,
The Hacienda & Spa
InSight Foto, Inc.
Klinger Constructors, LLC
La Fonda on The Plaza
La Mesa Dance Academy
Cherita Lamb
The Liquid Muse
Local Flavor Magazine
Main Event Entertainment
Market Street
Logie Mathis
Meow Wolf
Michael's Valet
Leslie Nathanson Juris &
Hervey Juris
Netflix Productions, LLC
Ninja Park Obstacle Center
Pilates Santa Fe
Pizza 9
Puzzah!
Salesforce Foundation
Trisha & Omar Sanchez
Sandia Peak Tramway
Santa Fe Audio Visual
Santa Fe Climbing Center

Santa Fe New Mexican
Santa Fe Youth Symphony
Sassella Restaurant
Señor Murphy Candy Maker
Barbara & Hap Stoller
Stone Age Climbing Gym
Studio X Inc.
Sunny505
Tim & Larry's Elixir
Boutique Chocolates
Tomasita's Albuquerque
Trader Joe's
Carol Tulenko
Video Magic
Violet Crown Cinemas
Walmart Supercenter
Albuquerque #831
Walter Burke Catering, Inc.
Wells Fargo Bank of New Mexico
What THE Truck
Whole Foods Market



10 Year Donors



THIS YEAR WE GRATEFULLY WELCOME:

JoAnn & Bob Balzer
Kathy & Paul Bushnell
Susan Feil
Gail & James Goodwin
Jeanne & Rod Martenis
Peacock, Myers P.C.
Christina Price & Connor Browne

Anonymous
A.M. & Paul Abbott
Kathy & Rick Abeles
Ann N. Aceves
Albuquerque Community Foundation
Hope Aldrich & Michael Jeffers
Charmay Allred
Cindy Aloï & Irwin Sugarman
Linda & Carl Alongi
Peggy & David Ater
Avalon Trust Company
Sallie & Joseph Badal
Russell Baker & Mark Corey
Bank of Albuquerque
Bank of America Charitable
Foundation, Inc.
Bank of America Merrill Lynch
Lisa & David Barker
Barker Family Properties
Suzanne Barker & James Baker
Julia Hosford Barnes & Will Barnes
Carrie Beaver
Lisa & Gregg Bemis
Beth & Mark Berger
Jean & John Berndt
Gay & Stan Betzer
Beezy & Steve Bing
Lee Blaugrund
Nancy & Cliff Blaugrund
Rod Boren

Julia B. Bowdich & John A. Carey
Jane Kantor Brickner
Broken Saddle Riding Company
Marcie Brooks & John Delamater
Sarah & Doug Brown
Louise Campbell-Tolber &
Dr. Steven Tolber
Tish Butler & Richard Carlson
Georgia Catasca
Century Bank
Dianne Chalmers Wiley & William Wiley
Kathy & David Chase
E. Lovering Cheston &
Eugene M. Cheston Jr.
Elaine & Wayne Chew
Jo & Jerry Church
City of Santa Fe Arts &
Culture Department
City of Santa Fe Children &
Youth Commission
Elaine Claire
Coca Cola Bottling Co. of Santa Fe, Inc.
Janis & Roy Coffee
Cynthia & Alan Coleman
Phil Cook
Carol & Dexter Coolidge
Michelle & Bill Coons
Kathy Costa
Michael & Kay Coughlin
Satch+ & George+ Cowan

William Cowles
Shane Cronenweth
Margaret & Richard Cronin
Krys & Phil Custer
Michael D'Alfonso
Kate & Andrew Davis
Sande Deitch
Susan & Conrad DeJong
Angie & Larry Delgado
Cynthia Delgado & John Crant
Valerie T. & Charles Diker
Linda DiPaolo Love & Stephen Love
Diane & Peter Doniger
Clara & David Dougherty
Susan & Ron Dubin
Carol K. Ducaj
Kay Duke-Ingalls & David K. Ingalls
Alice & Greg Dunn
Educational Foundation of America
Carole Ely & Robert Wickham
Enterprise Bank & Trust
Katherine & Owen Van Essen
Barbara Ettinger & Sven Huseby
Susan Feiner & Peter Whitman
Fidelity Investments
First National 1870
Pamela Fischer & Richard Fogel
Jane & Michael Flax
Alan Fleischauer & Thomas Higley
Susan Foote & Stephen Feinberg

Sheila Fortune Foundation
Freeport-McMoRan Copper & Gold
Pat+ & Roger Friedman
Maria & Frank Gallegos
Garfield Street Foundation
Gemini Rosemont
General Mills
David Gershenson
Susan & Bill Gloyd
Goodman Realty Group
Donna & John Goodwin
Lainie & Mac Grimmer
Claire+ R. Grossman
Guy's Painting Co., Inc.
Carey & John Gwynn
Valerie & Bud Hamilton
Fred Hampton
Hancock Family Foundation
Michele Holloway & Sandy Henry
John+ C. Herklotz
The DuBose & Dorothy Heyward
Memorial Fund
Sara Hiner
Hinkle Family Fun Center
Judy & Sam Honegger
Rod & Anne Honstein
Hotel Santa Fe, The Hacienda & Spa
Wade Hover
Hubbard Broadcasting Foundation
Penelope Hunter-Stiebel &
Gerald Stiebel
Roselyn Hurley
Ani Hurwitz
Medora & Jim Jennings
Cindy & Ken Johns
Joseph L. Fisher Foundation, Inc.
Leslie Nathanson Juris & Hervey Juris
Katz Ahern Herdman & MacGillivray, PC
Jan & William Keleher
Klinger Constructors, LLC
Judi & James Knapp
Jean+ Knapp
Carol H. & Robert D. Krinsky
Barbara & Jerry Landgraf
LANL Foundation
Stefan Lark
Barbara G. Lenssen & Keith Anderson
Margot & Robert+ E. Linton
Tom Linton
Gloria & Carl Luff
Edward & Virginia+ Lujan
Diana MacArthur
Ali MacGraw
Sally Malave & Gary Gibling
Market Street
Robin & Meade Martin

Kathleen & John McCarthy
McCune Charitable Foundation
Ingmarie & Tim McElvain
Sara McIntyre
Lynn McKelvey & Glenn Dickter
Millie W. McMahon
Karin & Brian McMahon
Susan Meredith
Roxanna Meyers & Stanley Mount
Ellen & Roger Miller
Leigh Moiola & Charles Dale
Beth+ & Steve Moise
Montgomery & Andrews Law Firm
Cynthia & David Montoya
Marjorie & David Morehead
Patricia S. Morris
Carol & Fran Mullin
Lynn Mullins
Arlyn & Fred Nathan
National Endowment for the Arts
New Mexico Arts
New Mexico Dancewear
New Mexico Department of Health
Nan Newton & Dave Grusin
NM Bank & Trust
Deb & Tom Novak
Anita Ogard & George Strickland
Kay & Robert+ Onstead
Catherine Oppenheimer
Ambassador Frank+ & Dolores+ Ortiz
Elise Parker Koenigsberg &
Samuel Konigsberg
Jan Paulk
Nancy & Ed Pierce
PNM Resources Foundation
Anne Ponce
Deborah & Earl Potter
Wendy & George Powell
Carol Prins & John Hart
Roberta & Dr. Barry Ramo
Ogden & Roxana Reid
Kathleen & Robert Reidy
Reggie Richdale
Barbara Riley
Shelley Roberts & Dewey Moore
Mara & Charles+ Robinson
Blanchette Hooker Rockefeller Fund
Tricia Rosenberg
Jane A. Rote
Frauke Roth
Juliana & Henry Rothschild
Donna Rust
Ann+ Rutledge
Cynthia Sanchez & Kerry Lee
Sandia National Laboratories
Santa Fe Community Foundation

Pamela Saunders-Albin
Lyn Schmidt
Nita & Doug+ Schwartz
James R. Seitz Jr.
Shattuck St. Mary's
Don Shina & Kevin Waidmann
Dianne & Ed Shinholser
Claudia & Ron Short
Marian Silver
Eve & Fred+ Simon
Helene Singer-Merrin
Robin Smith
Georgia+ & Jim Snead
Patty+ & Bill Snead
Barbara+ Somerfield & John Guffey
Sotheby's International Realty
Ted+ & Vada+ Stanley
Marilyn & Stan Stark
Robert Stern
Suzanne Stone
Dan Storper
Louise+ Taichert
Eugene V. & Clare E. Thaw
Charitable Trust
Leslie & Charles W. N. Thompson, Jr.
Sherry Thompson & David Miller
Garrett Thornburg
Thornburg Investment Management
Melanie & Ed Thorne
Meredith & Edward Tinsley
John+ L. Tishman
Lynn & Craig Trojahn
United Way of Central New Mexico
Arlene & Richard Vender
Angelina Vera & Raphael Shapiro
Doris Goodwin Walbridge Foundation
Tooker Walton
Eileen Wells
Wells Fargo Bank of New Mexico
Amy & Jim Weyhrauch
White & Luff Financial
Dora Williams
Jan & Alan Wilson
Maria & William Wolfe
Karen Wolfe-Mattison
Woods Design Builders, Inc.
Sandia Foundation's Hugh & Helen
Woodward Fund of the Albuquerque
Community Foundation
Richard M. Yates
Ellen Zieselman

+Deceased



Thanks to some of our most dedicated supporters, NDI New Mexico's 25th anniversary celebration was bigger and brighter than ever before with new levels of support benefitting New Mexico's children!

In order to continue the momentum and launch the next 25 years of teaching children excellence, Leslie Carpenter inspired the Movers & Shakers. By increasing your annual gift by 25%, Founders' Circle and Circle of Excellence members will become inaugural members and be invited to an exclusive dance party! Join the Movers & Shakers today! For more information please contact Myers Godwin 505.340.0213 mgodwin@ndi-nm.org or Suzie Blake 505.557.6041 sblake@ndi-nm.org.

Russell Baker
Beth Beloff & Marc Geller
Jean & John Berndt
Beezy & Steve Bing
Nancy & Cliff Blaugrund
Kathy & Shelley Burt
Louise Campbell-Tolber & Dr. Steven Tolber
Leslie Carpenter
Dianne Chalmers Wiley & William Wiley
Margaret & Richard Cronin
Valerie T. & Charles Diker
Linda DiPaolo Love & Stephen Love
Diane & Peter Doniger
Peggy & J.R. Dotson
Candy & Charles Easterling
Ardith Eicher & Dave Rashin
Kelcy & Cole Flanagan
Janet & Robert Ford
Deborah Fritz
Carol Fry Ray
Maria & Ed Gale
Johnnie Gillespie

Mark H. Gilman
Carolina Girimonte
Jaymini & Aleem Hasham
Peggy & Tom Hubbard
Linda Krull
Cherie Kusman Gamble & Michael Gamble
Ted & Cecelia Lambert
Marietta Leis & David Vogel
Barbara G. Lenssen & Keith Anderson
Christine & Drew McDermott
Millie W. McMahon
Mayo Miller King & Harold King
Roxanna Meyers & Stanley Mount
Kate & Robert Moss
Leslie Nathanson Juris & Hervey Juris
Kathleen & Robert Reidy
Marjorie & Steven Rogers
Sandy & Bruce Seligman
Marian Silver
Mindy & Simon Teolis
Helen Wertheim



THANK YOU TO OUR Corporate Council

Joe Farr, Co-Chair
Duke City Commercial, LLC

Leean Kravitz, Co-Chair
Fidelity Investments

Candace Beeke
Albuquerque Business First

Paul Cassidy, retired
RBC Capital Markets

Brian Charlton
Blue Cross & Blue Shield
of New Mexico

Kelly Famiglietta
Charles Stephen and Company, Inc.

Sharon Fletcher
Presbyterian Healthcare Services

David Foster
DHF Solutions, Inc.

Aleem Hasham
Kiddie Academy

Howie Herbert III
US Bank

Gerald Landgraf
Nob Hill Studios, LLC

Bill Lang
Albuquerque Journal &
Starline Printing

Nikki Mitchell
Bank of America Merrill Lynch

Tom Novak
Klinger Constructors

Jessica Sanchez
Western Sky Community Care

Benjamin Thomas
Sutin, Thayer and Browne, Lawyers

Dr. Steven Tolber
Advanced Allergy Associates of
New Mexico

John Varoz
Enterprise Bank & Trust

Valerie Wheatstine
United Rentals

THANK YOU TO OUR Corporate Partners

Generous support from local businesses and corporate foundations enhances our core programs, expands outreach, and sustains our commitment to organizational excellence.

AA Events & Tents
Abba Technologies, Inc.
Academy for the Love of Learning
AIC General Contractor
Albuquerque Academy
Albuquerque Business First
Albuquerque Journal
All World Travel, Inc.
The Alley
American Legion Post #1 Gaming Charity
Anchorum St. Vincent
Aon Risk Solutions
The Ark Bookstore
Automotive Resources
Avalon Trust Company
Bank of Albuquerque
Bank of America Charitable Foundation, Inc.
Bank of America Merrill Lynch
Barker Family Properties
BBVA Compass
BBVA Compass Foundation
Bohannon Huston
Bosque School
Box Studio LLC
Brace Builders LLC
Bumblebee's Baja Grill
C & C Distributors
Cafecito
The Candyman Strings & Things
Century Bank
Charles Stephen & Co. Inc.
The Cheesecake Factory
Chicago Style Pizza

CHRISTUS St. Vincent Medical Center
Cities of Gold Casino & Hotel
Cliff's Amusement Park
CliftonLarsonAllen LLP
Collector Cars of Santa Fe, Inc.
Cowgirl BBQ
Creative HomeBuyers, Inc.
Cuddy & McCarthy, LLP
Del Norte Credit Union
Desert Academy
Desert Paper & Envelope
Dion's Pizza
Duke City Commercial LLC
Electric Playhouse
Elite Dance
Enterprise Bank & Trust - Santa Fe
Ewing Irrigation & Landscape Supply
ExplorAbilities, Inc.
Eye Associates of New Mexico
Family Physicians of Albuquerque
Fidelity Investments
First National 1870
Fix My Roof LLC
Freeport-McMoRan Copper & Gold
Frontier Frames
Frostburg Dance Academy
galleryFRITZ
Garcia Automotive Group
Gemini Rosemont
General Mills
Genoveva Chavez Community Center
The Golden Eye
Gravity Park
Guadalupe Credit Union

Harry's Road House
Healthy Smiles Happy Teeth
High Point Grill
Hinkle Family Fun Center
Homewise
Hotel Santa Fe, The Hacienda & Spa
HUB International Insurance Services
Il Piatto
Il Vicino
Innovate + Educate
Integration Therapy LLC
Italian Festivals of New Mexico
J.C. Sales & Associates
JenkinsGavin, Inc.
Just For Grins
Katz Ahern Herdman & MacGillivray, PC
Kaune's Neighborhood Market
Kellam Orthodontics
Kia of Santa Fe
Kioti Clothing
Klinger Constructors LLC
KPMG
KSWV Radio Que Suave
L & P Building Supply
La Fonda on the Plaza
La Montanita Food Co-op
Larry H. Miller Charities
Lectrosonics
The Liquid Muse
Local Flavor Magazine
Maddox Management LLC
Maestas Development Group
Main Event Entertainment

Manitou Galleries
Market Street
Max's Beauty Salon
Meow Wolf
Michael's Valet
Milagro Dental
Modrall Sperling Law Firm
Molzen-Corbin & Associates
Montgomery & Andrews Law Firm
Moss Adams, LLP
N3B Los Alamos
NAI Maestas + Ward
Netflix Productions LLC
New Age Dentistry
The New Baking Co
New Mexico Dancewear
New Mexico Gas Company, Inc.
New Mexico Oil & Gas Association
Ninja Park
NM Bank & Trust
Oasis Green
op.cit. books
Paloma
Panda Express
Paper Dosa
Peoples Flower Shops
Peyton Wright Gallery
Pilates Santa Fe
Pizza 9
The Plaza Cafe
PNM Resources Foundation
Positive Energy Solar
Presbyterian Medical Services
Presbyterian Santa Fe Medical Center
Puzzah!
Railyard Urgent Care
The Ranch House
RBC Capital Markets
Rio Grande Credit Union
The Running Hub
Salesforce Foundation
Salmon Hauger Wealth Management
Group of Wells Fargo Advisors
Samuel Design Group
Sandia Laboratory Federal Credit Union
Sandia National Laboratories
Sandia Peak Tramway
Santa Fe Animal Shelter & Humane Society
Santa Fe Audio Visual
Santa Fe Climbing Center
Santa Fe Endodontics
Santa Fe Family & Functional Medicine
Santa Fe Girls' School

Santa Fe New Mexican
Santa Fe Prep
Santa Fe School for the Arts & Sciences
Santa Fe Youth Symphony
Sassella Restaurant
Schimmel Security LLC
Second Street Brewery
Señor Murphy Candy Maker
Sommer, Udall, Hardwick, Ahern & Hyatt, LLP
Sotheby's International Realty
South Broadway Neighborhood Association
Southwest Capital Bank
State Farm Insurance
Stevens, Thompson & Sweers Group
Stone Age Climbing Gym
Studio Southwest Architects
Sunny505
Sutin, Thayer & Browne Lawyers
Sweetwater Harvest Kitchen
Thompson Machine
Thornburg Investment Management
Tijeras Foundation
Tim & Larry's Elixir Boutique Chocolates
Tomasita's Albuquerque
Trader Joe's
Traveler's Market
U.S. Bank
U.S. Bank Foundation
U.S. Eagle Federal Credit Union
United Rentals
Video Magic
Violet Crown Cinemas
WaFd Bank - Santa Fe
Albuquerque Walmart Supercenter #831
Walter Burke Catering, Inc.
Wash Tub Laundromat
Wells Fargo Bank of New Mexico
Western Dermatology Consultants
Western New Mexico University
Western Sky Community Care
What THE Truck
Whole Foods Market
Wilcox & Myers, P.C.
Woods Design Builders, Inc.
XTO Energy
Zia Trust, Inc.



In Honor and In Memory of

IN HONOR OF

Russell Baker by Deborah Boldt
Russell Baker by James R. Seitz Jr.
Lou Begay by Kathy & Shelley Burt
Hannah Blok by Kathryn Blok
Ione Botkin by Rosvita Botkin
Julia B. Bowdich by Gordon E. Macaulay
Angie & Larry Delgado by Cynthia Delgado & John Crant
Valerie Diker by Lainie & Mac Grimmer
Valerie Diker by Joan & Robert Sobel
Diane Doniger by Ardith Eicher & Dave Rashin
Diane Doniger by Karen Freeman
Jennifer Fallis by Farrah B. Gentry
Diane Fisher by Mary & Mark Feldman
Diane Fisher by Elisa Hamill
Diane Fisher by Lisa Hamill
Diane Fisher by Meaghan & Scott Hindman
Diane Fisher by Nancy Hollander
Diane Fisher by Sarah Kotchian & Robert Nellums
Diane Fisher by Jane McLaughlin
Diane Fisher by Rheba Rutkowski
Diane Fisher by Elaine & Ron Solimon
Mary Geisz by Rebecca Pryor
Joyce & Earl Godwin by Ann DeHart & Robert Milne
Samantha Gordon by Sonia Gordon
Saul Gordon by Marcia Gordon
Mary Gullledge by Joan Eaton
Taylor Johnson-French by Leslie Kenney
Taylor Johnson-French by Mary Alex Rohleder
Hervey Juris by Dr. & Mrs. Michael Freund
Charlotte Martinez by Jeanette & Edward Martinez
Jesse Martinez by Jeanette & Edward Martinez
Sarah Miller by Roger A. Miller
Beth Moise by Kathleen & Robert Reidy

Steve Moise by Leslie Nathanson Juris & Hervey Juris
Barbara & Chuck Moore by Karen & Steven Berkowitz
Barbara Moore by Mr. Joseph M. Bryan, Jr
Kate Moss by Connie Girard-diCarlo &
Ambassador David diCarlo
Leslie Nathanson Juris by Colleen Carias &
Barry C. Herskowitz
Leslie Nathanson Juris & Hervey Juris by Gail &
Allen Juris
Leslie Nathanson Juris & Hervey Juris by Susan &
Scott Leemaster
Leslie Nathanson Juris & Hervey Juris by Carol Prins &
John Hart
NDI New Mexico 25th Anniversary Congratulations by
Karen J. Armitage & John Curl
NDI New Mexico Board of Directors by Diane Fisher
Catherine Oppenheimer by Celia Culver Rutt & Jim Rutt
Catherine Oppenheimer by Barbara Ettinger &
Sven Huseby
Catherine Oppenheimer by Franci Neely
Catherine Oppenheimer by Pamela Saunders-Albin
Catherine Oppenheimer by Joe Schepps
Catherine Oppenheimer by Nancy Zeckendorf
Hannah Ponce Griego by Chantel Ridley
Jennifer Riordan by Candace & Ben Beeke
Suzannah & Marshall Sale by Gail & James Goodwin
Anna Sanchez by Russell Baker
Danny Silver by Marcia & Tim Lenihan
Danny Silver by Davia Nelson
Eileen Wells by JoAnn & Bob Balzer
Eileen Wells by Aline Harris-Ellis & Terry Ellis
Marianne & Ivan Wright by Meredith Parks

IN MEMORY OF

Edward Feil by Susan Feil
Claudia Girimonte by Carolina Girimonte
Margaret Impellizzeri by Jay Impellizzeri
Beth Moise by Albuquerque Academy
Beth Moise by Linda & Carl Alongi
Beth Moise by Russell Baker & Mark Corey
Beth Moise by Edward Barad
Beth Moise by Rosemary & Dr. Thomas Baxter
Beth Moise by Jean & John Berndt
Beth Moise by Marlene & John Bingaman
Beth Moise by Brian Birk
Beth Moise by Nancy & Cliff Blaugrund
Beth Moise by Jamai & David Blivin
Beth Moise by Julia B. Bowdich & John A. Carey
Beth Moise by Jeanne & Gig Brummell
Beth Moise by Dianne Chalmers Wiley & William Wiley
Beth Moise by Elaine & Wayne Chew
Beth Moise by Matthew Coan
Beth Moise by Sally Corning & Ted Buchanan
Beth Moise by Geri Cramer
Beth Moise by Margaret & Richard Cronin
Beth Moise by Linda DiPaolo Love & Stephen Love
Beth Moise by Susan & Ron Dubin
Beth Moise by Linda & Richard Eitzen
Beth Moise by Lisa Enfield & Paul Bardacke
Beth Moise by Susan Feil
Beth Moise by Pam & Bill Flesner
Beth Moise by Libby Foster
Beth Moise by Peter Frank
Beth Moise by Jane & Charles Gaillard
Beth Moise by Diane & Don Goldfarb
Beth Moise by Helen Grevey & Jay Hertz
Beth Moise by Judy & Sam Honegger
Beth Moise by Sue Hutchison
Beth Moise by Nancy & Paul Anthony Jacobs
Beth Moise by Connie & Terry Johnson
Beth Moise by Judy Jones
Beth Moise by Laurie & Paul Kelson
Beth Moise by Susan & Jack Kennedy
Beth Moise by Jennifer & Bob Kimball
Beth Moise by Debbie & Patrick Kinsella
Beth Moise by KPMG
Beth Moise by Marietta Leis & David Vogel

Beth Moise by Barbara G. Lenssen & Keith Anderson
Beth Moise by Marilyn Lovett
Beth Moise by Roxanna Meyers & Stanley Mount
Beth Moise by Kate & Robert Moss
Beth Moise by New Mexico Oil & Gas Association
Beth Moise by Sandy & Russell Osterman
Beth Moise by Carmen Paradis & Brian McGrath
Beth Moise by Nancy & Ed Pierce
Beth Moise by Wendy & George Powell
Beth Moise by Charles P. Price III
Beth Moise by Carol Prins & John Hart
Beth Moise by Kathleen & John Pugh
Beth Moise by Kathleen & Robert Reidy
Beth Moise by Ann & Russell Rhoades
Beth Moise by Tricia Rosenberg
Beth Moise by Mary & Alex Ross
Beth Moise by Meryl & Ron Segel
Beth Moise by Patricia Shaffer
Beth Moise by Rosalie & Stuart Sherman
Beth Moise by Cheryl & Kurt Sommer
Beth Moise by Marilyn & Stan Stark
Beth Moise by Margaret & Randy Talbot
Beth Moise by Tijeras Foundation
Beth Moise by Meridith & Edward Tinsley
Beth Moise by Prof. Peter Winograd
Nathaniel Pavitt by The Mystery Lady of Santa Fe
Nathaniel Pavitt by Reaud Charitable Foundation
Priscilla L. & Clifford Eugene Richardson, Jr &
Josephine Anne & Angelo (A.J.) Asciolla by Sandra P.
& AF LT/Col(R) Clifford E. Richardson, III
Vito Santangelo by Anna & Joe Santangelo
Barbara Somerfield by John Clausen
Grace Elizabeth Vender by Arlene & Richard Vender

Gala Supporters

SANTA FE

IMPRESARIO

Thornburg Investment
Management

PRODUCER

Valerie T. & Charles Diker

DIRECTOR

Anchorum St. Vincent
CHRISTUS St. Vincent Medical
Center
Enterprise Bank & Trust
Garcia Automotive Group
Presbyterian Santa Fe Medical
Center
Eileen Wells

CHOREOGRAPHER

Century Bank Santa Fe

CONDUCTOR

Sotheby's International Realty
& Shane Cronenweth

DESIGNER

Ann N. Aceves
First National 1870
Fix My Roof LLC
Guadalupe Credit Union
PNM Resources Foundation

TABLE SPONSOR/HOST

Charmay Allred
Cindy Aloï & Irwin Sugarman
Tamara Bates
Beth Beloff & Marc Geller
Jean & John Berndt
Marlene & John Bingaman
Jennifer & Kevin Box
Sande Deitch
Diane & Peter Doniger
Paula & Steven Fasken
Diane Fisher
Mary & Allen Gullledge
Peggy & Tom Hubbard
Innovate + Educate
Beth⁺ & Steve Moise
Montgomery & Andrews Law Firm
Barbara & Chuck Moore
Kate & Robert Moss
Brenda & Thomas Nickoloff
Catherine Oppenheimer
Laurie Overton & Tom Linton
Jennifer Ramo & David Kutz
Woods Design Builders, Inc.

MEDIA PARTNER

Starline Printing

SPECIAL SUPPORT & IN-KIND

AA Events and Tents
Suzanne Barker & James Baker
Ellen & Paul Biderman
Marlene & John Bingaman
Marcie Brooks & John Delamater
Cowgirl BBQ
Sande Deitch
Linda DiPaolo Love &
Stephen Love
Diane & Peter Doniger
galleryFRITZ
Valerie & Bud Hamilton
Hotel Santa Fe,
The Hacienda & Spa
Donna Lefevé
Santa Fe Audio Visual
Santa Fe Youth Symphony
Señor Murphy Candy Maker
Walter Burke Catering, Inc.

SANTA FE GALA COMMITTEE

Linda DiPaolo Love, Co-Chair
Mayo Miller King, Co-Chair
Tory Bloodworth
Leslie Carpenter
Shane Cronenweth
Valerie T. Diker
Diane Doniger
Brenda Howard
Michelle Midyette
Brenda Nickoloff
Laurie Overton
Felicia Ponca Kenner
Marian Silver



Listed are contributors through March 15, 2020. Every effort has been made to present a complete and accurate list. We apologize for any errors or omissions and invite corrections.

ALBUQUERQUE

IMPRESARIO

Thornburg Investment
Management

PRODUCER

Valerie T. & Charles Diker

DIRECTOR

Garcia Automotive Group

CHOREOGRAPHER

NAI Maestas + Ward

CONDUCTOR

Klinger Constructors, LLC
Moss Adams, LLP

DESIGNER

First National 1870
Donna & John Goodwin
HUB International Insurance
Services
Molzen-Corbin & Associates
Tomasita's Albuquerque

ENTERTAINER

Studio Southwest Architects

TABLE SPONSOR/HOST

AIC General Contractor
Linda & Carl Alongi
Aon Risk Solutions
Holly Barnet-Sanchez &
David Foster
Jean & John Berndt
Nancy & Cliff Blaugrund
Julia B. Bowdich & John A. Carey
Connie & Paul Cassidy
Charles Stephen & Co. Inc.
Duke City Commercial LLC
Fidelity Investments
Kelcy & Cole Flanagan
Joyce & Earl Godwin
Jaymini & Aleem Hasham
L & P Building Supply
Barbara & Jerry Landgraf
Modrall Sperling Law Firm
Sandra P. & Clifford E. Richardson, III
Rio Grande Credit Union
Sandy & Bruce Seligman
U.S. Bank
Linda Vanzi
Western Sky Community Care

MEDIA PARTNER

Starline Printing

SPECIAL SUPPORT & IN-KIND

AA Events and Tents
All World Travel, Inc.
Suzanne Barker & James Baker
The Cheesecake Factory
Kenneth Conwell II
Diane & Peter Doniger
Electric Playhouse
Harris Jewelers
Herrera Coaches
High Point Grill
Santa Fe Audio Visual
Walter Burke Catering, Inc.
David Webster

ALBUQUERQUE GALA COMMITTEE

Janice Atchley, Co-Chair
Trish Farr, Co-Chair
Kelcy Flanagan, Co-Chair
Linda Alongi
Tooey Boyden
Connie Cassidy
Pamela Chavez
Krys Custer
Ted Lambert
Amanda Marquez
Nancy Olson
Char Rimbort
Brandon Writtenberry



Thank You SPECIAL FRIENDS

Leslie Carpenter, Trish Farr, Joe Farr, and Leean Kravitz, for your work on the NDI NEW MEXICO ADVANCEMENT COMMITTEE.

Nancy Blaugrand, Louise Campbell-Tolber, Ken DeBettignies, Richard Follingstad, Alex Hauger, Steven Rogers, and Miles Wolf for serving on the ALBUQUERQUE DEVELOPMENT COMMITTEE.

Jamai Blivin, Kate Moss, and Lisa Samuel for participating on the SANTA FE DEVELOPMENT COMMITTEE.

Louise Campbell-Tolber, Leslie Carpenter, Larry Delgado, Nancy King, Edward Lujan, Brent Moore, and Randi Valverde for your guidance with the GOVERNMENT RELATIONS COMMITTEE.

John Burnham, Susan Dubin, Lon Erickson, Charlie Wilson, and Garrett Thornburg, for your expertise on the INVESTMENT COMMITTEE.

Ed Thorne for your insights on the STRATEGIC PLANNING COMMITTEE.

STARLINE PRINTING for their generous donation of printing the Program Book and Gala invitations.

NEW MEXICO DANCEWEAR for generous donations and discounts for our Hiland and Dance Barns families.

Members of the Santa Fe Fire Department, Bernalillo County Sheriff's Departments, Albuquerque Police Departments, The Bernalillo County Fire and Rescue, and

Albuquerque Fire Department for all they do, and for dancing in our shows!

Hakim Bellamy and Beyond Poetry LLC for their generous donation of time and artistry in creating the world premiere of *Peter & The Wolf*.

Dahl Delu for access to his sets and scene shop.

EMPLOYEES OF CHEESECAKE FACTORY AND UNITED RENTALS for their time and enthusiasm volunteering at the Albuquerque Dance-A-Thon.

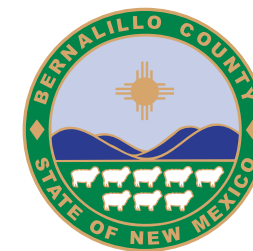
Thank you to the following for going above and beyond to make our RESIDENCIES SO SPECIAL FOR THEIR COMMUNITIES:

- Hobbs Superintendent TJ Parks
- Kevin Cook from Freeport-McMoRan and Debbie Kuhns for their support in Silver City
- Dana Chavez, Ronna Kalish, and the New Mexico Tech Performing Arts Series!

DR. CANDACE FLINT, Principal, and GONZALES COMMUNITY SCHOOL for opening their gyms for Parent/Teacher dance and occasional SWAT rehearsals.

PRINCIPAL JACK LAIN and the staff at El Camino Real Academy for so generously sharing their gym for NDI New Mexico's Teaching Excellence® Workshop.

All of our PUBLIC ELEMENTARY CLASSROOM TEACHERS and IN-SCHOOL COORDINATORS for helping our programs run smoothly throughout the school year.



NDI NEW MEXICO Staff

SENIOR MANAGEMENT

Russell Baker
Executive Director

Liz Salganek
Artistic Director

Tom Downey
Director of Finance & Administration

Mary Gullledge
Director of Advancement

Brian Jensen
Chief of Staff

Elizabeth Childress
Human Resources Manager

ADMINISTRATION

Robert Benavidez
Santa Fe Facilities Manager

Cheryl Henderson
Hiland Custodian

Marc Hirsch
Hiland Events

Irene Jimenez
Senior Accountant, Albuquerque
Office Manager

Nam Khalsa
Bookkeeper, Santa Fe Office Manager

Kristyn Leyba
Santa Fe Custodian

Gary Moreno-Ulibarri
Hiland Facilities Manager

Anna Sanchez
Executive Assistant

Gemtria St Clair
Special Projects

Patricia Stringfellow
Payroll Specialist

ADVANCEMENT

Suzie Blake
Santa Fe Director of Development

Nina Chavez
Corporate Giving & Events Manager

Cynthia Delgado
Government & Corporate
Relations Director

Myers Godwin
Albuquerque Director of
Development

Jennifer Venegas
Grants Manager

Feliciana Warren
Development Associate

Laurie Wisdom
Marketing Communications Manager

ARTISTIC AND PROGRAM DIRECTORS

Brian Bennett
Associate Music Director

Jackie Burns
Associate Artistic Director

Bert Dalton
NDI New Mexico Music Director

Jessie DuBois
Albuquerque Outreach Artistic
Director

Joel Fadness
Residency Music Director

Dan Lizdas
North Music Director

Emily Lowman
Santa Fe Outreach Artistic Director

Todd Lowry
Albuquerque Music Director

Hannah McDowell
North Outreach Artistic Director

Steven Melendez
Hiland Artistic Director

Ron Mier
Dance Barns Technical Director

Kyra Murzyn
Dance Barns Assistant Technical
Director

Tom Porras
Advanced Training Director

Emma Raker
Residency Artistic Director

Rodney Rivera
Dance Barns Artistic Director

Davey Rogulich
Hiland Technical Director

ARTISTIC AND PROGRAM STAFF

Tina Anderson-Lorenzo
Dance Barns Instructor

Wendy Barker
Hiland Program Producer

Christiana Barnett-Murphy
Residency Artistic Associate

Tamara Bates
Dance Barns Instructor

Felicia Blea
Hiland Instructor

Melissa Briggs-Bransford
Santa Fe Artistic Associate

Lori Brody
Dance Barns Instructor

Gabriel Carrion-Gonzales
Hiland Artistic Associate

Wendy Chapin
Dance Barns Instructor

Amy Compton
Dance Barns Instructor

Tara Debevec
Dance Barns Instructor

Andrea Gallegos
Dance Barns Administration

Lizeth Garcia
Albuquerque Outreach Producer

Susana Garcia
Albuquerque Costume Assistant

Janet Gilchrist
Santa Fe Administration

Ariel Gottschall
Santa Fe & North Outreach/
Dance Barns Instructor

Annica Graham
Senior Outreach Producer

Pamela Ladas
Santa Fe Artistic Associate

Allegra Lillard
Dance Barns Instructor

Ashley Lopez
Albuquerque Apprentice/Dance
Barns Instructor

Tammy Luna-Leyba
Santa Fe Costume Assistant

Geraldine Mascarenas
North Producer

Lexi McGrogan
Albuquerque Costume Assistant

Tracey Meisenheimer
Albuquerque Costumer

Shane Montoya
Residency/Outreach Artistic Associate

Laurie Moodie
Albuquerque Costume Assistant

Corey Nagel
Hiland Instructor

Sandra Ortiz
Santa Fe Costumer

Lynn Osborne
Dance Barns Instructor

Olivia Parent
Dance Barns Instructor

Maia Plevin
Hiland Instructor/
Albuquerque Apprentice

Simone Reche
Hiland Instructor

Vladimir Reche
Hiland Instructor

Coryn Richey
Albuquerque Outreach Instructor

Tracy Ritter-Golson
Albuquerque Outreach Instructor

Gabi Rojas
Hiland Instructor

Sheila Rosen
Dance Barns Instructor

Alyx Sanchez
Albuquerque Artistic Associate

Donna Scheer
Dance Barns Instructor

Antionette Segura
Albuquerque Outreach/
Hiland Instructor

Danny Silver
Dance Barns Program Producer

Lillian Summers
Santa Fe Artistic Associate

Tish Ulibarri
Albuquerque SWAT/Cel Producer

Kimberly White
Albuquerque & Santa Fe Outreach/
Hiland Instructor

Karina Wilder
Dance Barns Instructor

MUSICIANS

Addela Bransford
Santa Fe Outreach/Residency Pianist

Michael Burt
Santa Fe Outreach Pianist

Sid Fendley
Albuquerque Outreach/Hiland Pianist

Steve Figueroa
Albuquerque Outreach Pianist

Debby Hanna
Albuquerque Outreach/Hiland Pianist

Matthew Jaeger
Albuquerque Outreach Pianist

Jesus Lazcano
Santa Fe Outreach Pianist

Michael Maricle
Santa Fe Outreach Pianist

Melanie Monsour
Dance Barns Pianist

Steven Paxton
Santa Fe Outreach Pianist

Elliot Smith
Albuquerque Outreach Pianist

Kevin Ward
Santa Fe & North Outreach/
Dance Barns Pianist

Jeremiah Weimer
North Outreach Pianist





DESERT ACADEMY

RAISING THE BAR FOR EDUCATION IN NEW MEXICO

Where will your journey lead you?

Some of the colleges our 2019 and 2020 grads have earned acceptance into:

Duke, Harvard, Lehigh, Pomona, Georgia Tech, Purdue, Parsons School of Design, Case Western Reserve, Univ. of Southern California, Smith, Whitman

Now Enrolling Grades 6-12
6th Grade Early Enroll Discount

INTERNATIONAL BACCALAUREATE
WORLD SCHOOL

Ask about Tuition Assistance
www.desertacademy.org

HAVE FUN LIKE YOU MEAN IT.

ELECTRIC PLAYHOUSE

Gigi Mills Pascal Pierme

707 Canyon Rd
Santa Fe NM 87501
505-983-3707
gfcontemporary.com

gf contemporary

Proud Sponsor of NDI New Mexico

GUADALUPE CREDIT UNION
More than banking, we're family!™

guadalupecu.org | (505) 982-8942

Federally Insured by NCUA

Hub International proudly supports NDI New Mexico

Good insurance supports you,
guides you and empowers you.
And so should a good broker.

Hub International
7770 Jefferson NE Suite 101
Albuquerque, NM 87109
505-828-4000

Albuquerque: 505-828-4000
Santa Fe: 505-982-4296
Las Vegas: 505-425-9325
Carlsbad: 575-887-1181
Las Cruces: 575-524-8686

Advocacy. Tailored Insurance Solutions. Peace of Mind.

The Golden Eye LLC

JEWELS FOR THE KING AND QUEEN IN ALL OF US...

115 Don Gaspar - Between San Francisco & Water
505.984.0040 • www.goldeneyesantafe.com

THE ART OF LIVING

SOTHEBYSHOMES.COM/SANTAFE

SHANE CRONENWETH
and Sotheby's International Realty Foundation
Proudly Support NDI New Mexico



Shane Cronenweth, Associate Broker
505.577.2000
shane.cronenweth@sothebyshomes.com
ChooseSantaFe.com

Sotheby's
INTERNATIONAL REALTY

231 Washington Avenue, Santa Fe, NM 87501 | 505.988.8088 | sothebyshomes.com/santafe

Sotheby's International Realty and the Sotheby's International Realty logo are registered (or unregistered) service marks used with permission. Operated by Sotheby's International Realty, Inc. Real estate agents affiliated with Sotheby's International Realty, Inc. are independent contractor sales associates and are not employees of Sotheby's International Realty, Inc. Equal Housing Opportunity.



"Dance is the hidden language of the soul."
- Martha Graham



**PROUD SUPPORTERS OF
NDI NEW MEXICO SINCE 2002**

(505) 822-9990 www.klingerllc.com

Working together
to better the
health and
well-being of
our people
and community.



As a nonprofit Community Health Impact Organization, we're re-imagining and investing in the long-term health of Santa Fe and northern New Mexico.

To learn more,
visit Anchorum.org



MARIACHI



ELEMENTARY STRINGS



ORCHESTRA



JAZZ

MUSIC IS FOR EVERYONE



FALL AUDITIONS IN MAY | SIGN UP NOW ON OUR WEBSITE WWW.SFYSA.ORG

POSSIBILITY RISES IN THE WEST

When we share a common goal, the sun rises on endless opportunity. That's why we believe in the great promise of a better tomorrow for our clients and communities.

We're proud to support NDI New Mexico.

RISE WITH THE WEST.



Smile.

Your search for a pediatric dentist is over.

*Kids love us.
Parents trust us.
Doctors recommend us!*

AMERICA'S PEDIATRIC DENTISTS
THE BIG AUTHORITY on little teeth

Santa Fe or Los Alamos · just-for-grins.com · 505.428.7878 · Dr. Elizabeth Prishkulnik

MADDOX & CO. REALTORS®

LIVE | WORK | INVEST
FOUR DECADES LOCAL & FAMILY OWNED

Contact us:
maddoxrealtors.com
505-764-0400

We became confident homebuyers with help from Homewise.

Homewise can help you too.

Reach your financial and home buying goals by attending a **FREE** Financial Fitness and/or Homebuyer Education workshop. Classes will help you:

- proactively manage your money
- plan for the future
- make smart home purchase decisions

Visit our website for a listing of our classes in both English and Spanish.

Sign up today!
 Call 983.9473 or register online at homewise.org/register

LECTROSONICS®

Made in the USA by a Bunch of Fanatics®

581 Laser Road NE • Rio Rancho, NM 87124 USA • www.lectrosonics.com
(505) 892-4501 • (800) 821-1121 • fax (505) 892-6243 • sales@lectrosonics.com

Lectrosonics is a U.S. company located in the city of Rio Rancho in the heart of New Mexico. With a continued focus on quality and innovation since 1971, Lectrosonics is well respected within the film, broadcast, music, and theater technical communities. We have a strong history of delivering products that satisfy your needs for quality wireless technology with excellent customer support and service.

TRANSMITTERS
AUDIO OVER IP
RECORDERS
RECEIVERS
MULTICOUPLERS
DIGITAL WIRELESS
ANTENNAS
AUDIO PROCESSORS

WIRELESS MICROPHONE SYSTEMS

New Mexico Dancewear

PROUDLY PARTNERS WITH

NDI New Mexico

We have been supporting the joy of dance in New Mexico for over 45 years! In the past two years, NM Dancewear has given over \$2,000 in dancewear credit to NDI New Mexico dancers in need and we are proud to have them as a partner for yet another year. Every time you shop at New Mexico Dancewear, we donate 5% of your sales back to the studio to help these dancers. THANK YOU for your help!

FIND US ON
FACEBOOK & INSTAGRAM

8206 Menaul Blvd Albuquerque, NM 87110
505-292-2747 | info@nmdancewear.com

Kellam Orthodontics

Proudly Supports NDI New Mexico

(505) 982-5531
www.kellamorthodontics.com



Thank You NDI New Mexico for Teaching Children Excellence!

The arts have a unique power to engage and motivate children. NDI-NM's unique programs help children develop discipline, a standard of excellence and a belief in themselves...providing a great head start to pursue their dreams, whatever they may be.



Creative HomeBuyers, Inc.

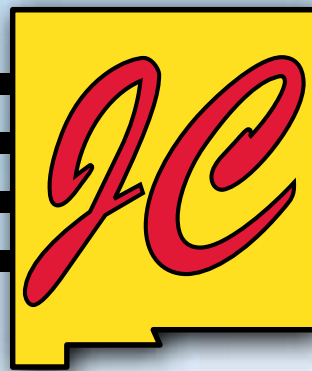
Helping Northern New Mexico Families Achieve Their Dreams of Home Ownership & Providing Investors With Secure Investments Since 1999

505.474.5621

NMLS #320126



Santa Fe's BEST



SALES

Private Communities

CASITAS DE SANTA FE

4650 Airport Rd
Santa Fe, NM 87507

471-2929

RANCHO ZIA

1352 Calle Inez
Santa Fe, NM 87507

471-2947

SANTA FE HACIENDA

1115 Ocate Rd
Santa Fe, NM 87507

471-3112

SANTA FE WEST

2284 Henry Lynch Rd
Santa Fe, NM 87507

471-2411

IN PARK SALES & RENTALS



ALL APPLICATIONS ACCEPTED!

New and Used Manufactured Homes

Are Always Available!

Homes For Sale and Rent

Mobile Home Spaces For Rent

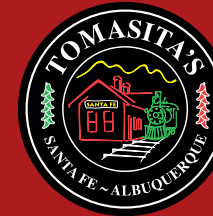
Easy Financing Available

Visit Us @ WWW.PRENTICEPROPERTIES.COM

Proud supporter of The JC Sales and Creative Homebuyer's Scholarship Fund
for NDI New Mexico Advanced Training

CALL TIM FOR APPOINTMENT

505-699-2955



**REAL FOOD.
REAL RECIPES.
REAL CHILE.**



TOMASITA'S has served real New Mexican food for over 40 years. When Tomasita created our recipes, she made sure she used fresh, local ingredients—a tradition our restaurants in Albuquerque and Santa Fe follow to this day. Stop by either of our two locations for real chile, real beef, real honey, real corn in a warm and friendly atmosphere.

TOMASITA'S ALBUQUERQUE

4949 Pan American Freeway NE
(505) 344-1204



TOMASITA'S SANTA FE

500 South Guadalupe Street
(505) 983-5721

TOMASITAS.COM

the Cat north & south

A project of the Santa Fe Animal Shelter offering quality resale and estate sale services with 100% of profits supporting homeless animals!



Shop our stores or donate your art, gently used clothing, furniture, and household items at either of our two convenient locations. Open 7 days a week!

South
2570 Camino Entrada
505-474-6300

North
541 W. Cordova Road
505-780-8975

Mon-Sat: 10 a.m. to 6 p.m. • Sun: 11 a.m. to 5 p.m.

Estate Sale Services

Whether you're downsizing or making plans for your belongings, the Shelter's estate processing company will ensure that your possessions make a difference in the lives of animals.

For more information, email: estates@sffhumanesociety.org

General Shelter Information: 505-983-4309
100 Caja del Rio Road • Santa Fe, NM 87507 • sffhumanesociety.org



We're From The Same Place You Are

The land of enchantment isn't just our home, it's a state of being. Discover rewarding accounts, affordable loans, less fees, and the Credit Union difference.

800.983.7328 | SECUNM.ORG

Federally Insured by NCUA.

state EMPLOYEES
CREDIT UNION



SANTA FE ANIMAL SHELTER

We are northern New Mexico's largest open-admission, no-kill animal shelter.

As a private 501(c)(3) organization, no tax dollars are used to fund our lifesaving work.

505-983-4309
SFHUMANESOCIETY.ORG

Services for the public:

- Adoptions
- Canine Training Classes
- Behavior Helpline
- Cat North & Cat South Resale Stores
- Community Dog Parks
- Reuniting Lost Pets
- Low Cost Spay/Neuter & Vaccines
- Volunteer Opportunities
- Humane Education
- Public Veterinary Care
- Compassion Services
- Campus Tours

For more information about our programs and services, visit sffhumanesociety.org.

100 Caja del Rio Road • Santa Fe, NM 87507



DALE TERBUSH, *When The Dancer Becomes The Dance*, Acrylic, 48" x 48"

MANITOU GALLERIES

123 WEST PALACE AVENUE
505.986.0440

SANTA FE, NEW MEXICO
WWW.MANITOUGALLERIES.COM

225 CANYON ROAD
505.986.9833



STORING CAR ENTHUSIASTS' PRIZED POSSESSIONS FOR OVER 20 YEARS



State of the art car storage facilities.
Four locations with 5th due for completion in 2021.
Currently 1 unit, 2,250 sq. ft. available for sale.
Conveniently located off Hwy 599. The 'Go To' place for your car storage needs.
7508 Avenger Way Santa Fe, NM collectorcarssantafe.com
Tom Linton 505.660.3039



"mah-waan, mah-waan"
WELCOME

EXPERIENCE SANTA FE'S ONLY NATIVE AMERICAN OWNED HOTEL
855-825-9876 | HOTELSANTAFE.COM | STAY@HOTELSANTAFE.COM



511 Old Santa Fe Trail | kaunes.com | 505.982.2629
Monday - Saturday 8:00am - 6:50pm



PEYTON
WRIGHT

237 E. Palace Ave Santa Fe, New Mexico 87501 505-989-9888
800-879-8898 info@peytonwright.com www.peytonwright.com

Western DERMATOLOGY Consultants



“ One nice aspect of our practice is that if one of our estheticians sees something they think is concerning, they can come and get one of us to look at it. We think that’s a real benefit to our cosmetic clients,” says Dr. Einhorn. ”

The most beautiful skin is healthy skin, and clients can be assured they will get both health and beauty at Western Dermatology Consultants, Albuquerque’s premier, all-female dermatology group.

Since 1997, the physicians—Drs. Leslie Glass and Barbara Einhorn—have helped Albuquerqueans achieve healthy, perfected skin by thwarting skin cancer and other serious ailments, while also providing the best and newest treatments in modern skincare techniques and procedures.

While the physicians and their assistants focus on general dermatology and surgery, cosmetic treatments are also performed by the physicians and physicians’ assistants, supported by a skilled team of estheticians and registered nurses who specialize in Botox® and dermal fillers. The cosmetic staff stays at the forefront of the latest treatments through active continuing education and the group provides skin-perfecting laser treatments, advanced microdermabrasion, and Clear

& Brilliant skin tone/texture treatments. Additionally, Western Dermatology Consultants is proud to be the only practice in Albuquerque to offer Isolaz acne therapy, and TempSure – an innovative technology that triggers new collagen production, which targets fine lines, wrinkles and the appearance of cellulite.

Western Dermatology Consultants is the only practice in the state that offers Pharos laser treatments, which treat individuals who suffer from psoriasis, vitiligo, and other skin conditions. The group is also one of the few to offer photo-dynamic therapy for the treatment of actinic keratosis of the face or scalp. In addition, Western Dermatology Consultants is a leader in body sculpting with CoolSculpting®, a simple, non-invasive technique that freezes fat away. The body sculptors at Western Dermatology Consultants have over a decade of combined experience and custom-tailor treatment plans for each client’s desired goals. And because two physicians run the group, one is never out of reach for clients with cosmetic concerns.

Eastside

10151 Montgomery Blvd. NE Bldg. 1
Albuquerque, NM 87111
(505) 855-5503

Westside

4801 McMahon Blvd. NW Ste 270
Albuquerque, NM 87114
(505) 855-5533

The Spa

10151 Montgomery Blvd. NE Bldg. 1
Albuquerque, NM 87111
(505) 855-9267

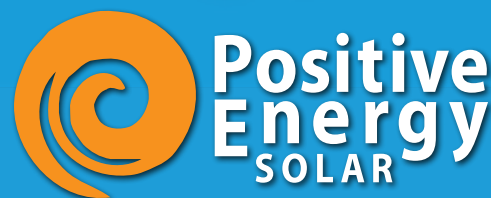


www.westerndermatology.com

GO SOLAR & MAKE A DIFFERENCE!



You’ll **save money** on your electric bills while **generating clean power** & doing your part to preserve our planet for future generations to enjoy.



GENERATE
POSITIVE
ENERGY™

Proudly supporting NDI & our community since 1997.

PositiveEnergySolar.com | 505.295.2256



HARRY'S ROADHOUSE

SUPPORTS NDI AND OUR FAVORITE STARS LILIA, DANNY, AND GREDEL!

La Montañita Coop Food Market

connecting food, health, environment & community

BEST OF THE CITY 2018 WINNER

best health food store

LA MONTAÑITA COOP FOOD MARKET

www.lamontanita.coop

PNM is proud to partner with NDI New Mexico in moving generations of New Mexicans into a clean energy future.



To learn more visit www.pnm.com/forwardtogether

The Ranch House



Great food + Good times
2571 Cristos Rd, Santa Fe
Across from the Auto Park near Kohls
505-424-8900 • theranchhousesantafe.com

Señor Murphy Candymaker
A SANTA FE TRADITION SINCE 1971

La Fonda Hotel
Santa Fe Place
DeVargas Center
Buffalo Thunder Resort

Take 10% OFF
Señor Murphy Boxes
with this barcode!

0 14705 99910 1

Expires 6/30/2014

Paloma

VIBRANT MEXICAN KITCHEN AND MEZCAL BAR

COCKTAILS & DINNER 7 NIGHTS A WEEK

PALOMASANTAFE.COM | 505-467-8624 | 401 SOUTH GUADALUPE ST. | SANTA FE, NM



Wayne Steen CLU ChFC, Agent
3005 S St Francis, Suite 1E
Santa Fe, NM 87505
Bus: 505-820-7926
wayne.steen.ssnr@statefarm.com

Family. Friends. Community.

We're all in this together.

State Farm® has a long tradition of being there. That's one reason why I'm proud to support NDI New Mexico.

Like a good neighbor, State Farm is there.®



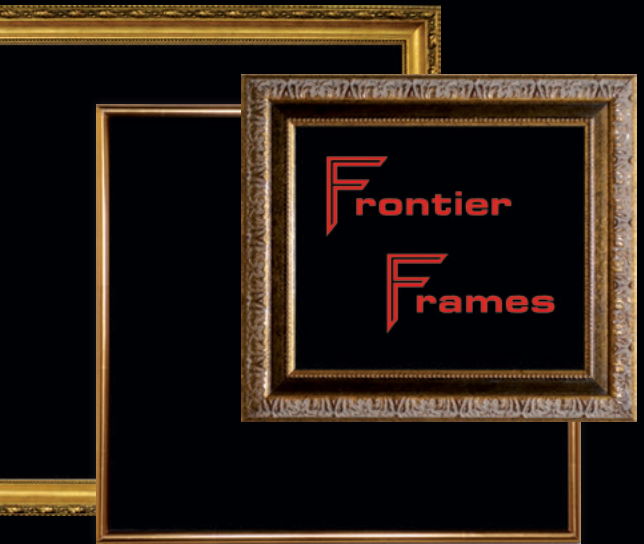
Dance
is the hidden
language of the
soul



NAI Maestas & Ward

NAI Maestas & Ward is a proud supporter of
NDI New Mexico and its mission of engaging and
motivating children through the unique power of the arts.

505 878 0001 www.gotSPACEUSA.com



While your art knows no bounds, let Frontier Frames
showcase your work with quality custom picture framing.

**At the Allegro Center • 2008 St. Michael's Drive
505.473.1901 • frontierframes.net**

Serving Santa Fe Artists, Galleries, and Collectors since 1973



 **INTEGRATION** THERAPY
Osteopathy • Physical Therapy • Functional Movement

Jodi Medell, PT, DPT

460 St. Michael's Drive, Suite 100
Santa Fe, NM 87505

T 505-780-8783
C 505-670-8426
F 505-780-8794

jodi@integrationpt.com
integrationpt.com



running hub
SANTA FE

favorite brands | custom fit | runsantafe.com | 1100 don diego




JENKINSGAVIN
LAND USE | PROJECT MANAGEMENT

Dynamic **Presence**
Innovative **Design**
Consistent **Results**

JenkinsGavin, Inc.
is a development
management firm
specializing in
planning, facilitation
& management of
development
& construction
projects.

T 505.820.7444 | JENKINSGAVIN.COM

SECOND STREET BREWERY
A family favorite since 1996!



3 SANTA FE LOCATIONS

The Original - 1814 Second Street
The Railyard - 1607 Paseo De Peralta
Rufina Taproom - 2920 Rufina Street
WWW.SECONDSTREETBREWERY.COM



FRESH IS GOOD!



BUMBLE BEE'S DOWNTOWN


Serving fresh, authentic, made-to-order, Baja-style gourmet Mexican food including burritos, tacos, tortilla burgers, fresh salads, rotisserie chicken, green chile cheese burgers, and an extensive vegetarian/vegan selection!

SANTA FE'S ONLY DOWNTOWN DRIVE THRU

**TRY OUR PICK-UP WINDOW
FOR CALL IN ORDERS**

FINE FARE. PRICED FAIR.

BUMBLE BEE'S
BAJA GRILL

301 Jefferson • 505.820.2862
bumblebeesbajagrill.com 

THE BUMBLE BEE BOYS!



(505) 300-4107
WWW.SCHIMMELSECURITY.COM

SANTA FE
Girls' SCHOOL

Inviting
4th & 5th
grade
families to
schedule
a visit!

Now accepting applications for
the 2020-2021 academic year.

310 West Zia Road • 505-820-3188
www.santafegirlsschool.org



"In everything we do,
we want to make
you smile."

We offer a wide range of dental
services and procedures, including:

- Cosmetic Dentistry
- Sleep Apnea Appliances
- Same-day Crowns & Bridges
- Implant Placement & Restoration
- Periodontal Laser Treatment
- Botox & Dermal Fillers
- Conscious Sedation
- Whitening
- Invisalign



Our office is always
accepting new patients!
2019 Galisteo St. Ste L2
Santa Fe, NM 87505

MilagroDentalNM.com • 505-982-9222

Delicious Mesquite BBQ
Creative Comfort Food
24 Amazing Craft Beers
Fabulous Full Bar
Award Winning Catering
Nightly Entertainment
Family Friendly

Cowgirl
Santa Fe

reservations 505 982-2565
319 S Guadalupe St

il piatto
Italian Farmhouse Kitchen
Santa Fe, New Mexico
Since 1996

Open for Dinner 7 Nights 4:30 to 9pm
Happy Hour 4:30 to 6pm Nightly!
Lunch: Wed. to Fri. 11:30am - 4:30pm

Wine Spectator
AWARD OF EXCELLENCE
2018

edible santa fe
LOCAL HERO

505-984-1091 or ilPiattoSantaFe.com
95 West Marcy Street, Downtown Santa Fe

NDI New Mexico! It's just what the doctor ordered!

FAMILY PHYSICIANS OF ALBUQUERQUE, P.C.
DEDICATED TO COMPLETE FAMILY HEALTH CARE

Donald E. Pichler, M.D., F.A.A.F.P.
3825 Eubank NE, Ste F
505-292-4080

**CHALLENGING
EDUCATION
INCLUDES
THE
ARTS**

Inquire @
bosqueschool.org
(505) 898-6388

**BOSQUE
SCHOOL**
Challenging Education

Personalized care
that gets results

Physical, Occupational, and Speech Therapy
for children and adults

(505) 268-7988 • explorabilitiestherapy.com
5006 Copper NE • Albuquerque, NM 87108

EXPLOR ABILITIES
THERAPY SERVICES FOR ADULTS AND CHILDREN

The Candyman
Strings & Things

We ♥ NDI NM!

strings & things
Libertas Musica
Established 1969

New Mexico's Premier Music Store!
Musical Instruments & Accessories
Sales • Service • Lessons • Rentals

851 St. Michael's Drive • 505.983.5906
candymansf.com

**PAPER
DOSA**

551 West Cordova Road | Santa Fe
eat@paper-dosa.com

505.930.5521



Welcome and visit us in following cities of New Mexico

Albuquerque, Bernalillo, Farmington, Gallup, Los Lunas, Rio Rancho, Roswell, Santa Fe

Find out more on PANDAEXPRESS.COM

Career opportunities on PANDAEXPRESS.COM/CAREERS

**BRACE
BUILDERS**

Custom remodeling and landscaping
for your home or business.

505.859.3055
bracebuildersllc.com
License No. 378763

Herrera Coaches Inc.

"with us safety comes first"

10605 CENTRAL AVE NW • ALBUQUERQUE, NM 87121

FOR RESERVATIONS CALL (505) 242-1108



WWW.HERRERACOACH.COM

Healthy Smiles
Happy Teeth

Pediatric Dental Specialist
Patricia Peck, DDS



*Patricia Peck proudly supports
NDI New Mexico's Core Four -
Work Hard. Do Your Best.
Never Give Up and Be Healthy!*

Dentistry for Infants, Children,
Adolescents & Special Needs Children
(505) 989-9033
www.childs2thdr.com



WALTER BURKE CATERING



*full service catering
party planning - weddings
special events ~ dinners*

contemporary cuisine, classic service

505-473-9600
www.walterburkecatering.com



Kioti

Clothing

Cut Loose Habitat Yasuko Kurisaka

DeVargas Center
179-B Paseo de Peralta
Santa Fe • New Mexico
505.984.9836

 **SANTA FE SCHOOL FOR THE ARTS & SCIENCES**
BRIGHT MINDS. KIND HEARTS. WHOLE CHILD.

SUMMER CAMP
 **ENROLL TODAY!**




7 Weeks of Exciting and Enriching Camps
Ages 3 to 14 June 8 - July 31


JUST A FEW OF OUR WEEKLY THEMES:

- ★STEAM for the Younger Set (ages 3-4)★
- ★Insectomania! (ages 5-6)★
- ★Pokémon (ages 7-9) ★
- ★Stop Motion Animation (ages 10-14)★

Scholarships Available - CYFD Funds Accepted
www.santafeschool.org | 505-438-8585
5912 Jaguar Drive, Santa Fe, NM 87505

 **cafecito**
TRAILHEAD

Blending Culture, Coffee & Delicious Food



Monday - Saturday | 8am - 4pm - Sunday | 9am - 2pm

Trailhead Compound, 922A Shoofly St. Santa Fe, NM 87505
@cafecitosantafe | cafecitosantafe.com | (505) 310-0089



Never Worry Again!
RESIDENTIAL + COMMERCIAL + GOVERNMENT

Are you this happy with your roofing company?



Photography by InSight Foto

If the answer is no, rest assured, you can be!

STEWARDSHIP

We take pride in helping home and business owners improve energy efficiency, increase property values & extend the life of their roofs by restoring them with materials recognized by the Cool Roof Rating Council.

SUSTAINABILITY

Energy & environmental performance are the key reasons we developed our Roof Restoration program. Roof Restoration eliminates unnecessary landfill waste, protects buildings from water damage and UV deterioration & saves money by reflecting heat & lowering AC costs.

SATISFACTION

Fix My Roof measures satisfaction by the hundreds of hugs received when we return for our Free Annual Maintenance Visit.

www.**FixMyRoof**.com | **505.919.8011**

Proud to Support
NDI



dions.com

**WE UNDERSTAND
THE COMMITMENT...**

N^{del} Norte[®]
CREDIT UNION
Proudly supports



Open an account and unlock a world of financial possibilities – for you and your little one.

EVERYDAY dncu
dncu.org



Your savings federally insured to at least \$250,000 and backed by the full faith and credit of the United States Government

NCUA

National Credit Union Administration, a U.S. Government Agency

Take
 of
your company's IT.

abba
TECHNOLOGIES™



Proud sponsor of
NDI New Mexico

abbatech.com // 505.889.3337

WOODS
DESIGN | BUILDERS



CONSISTENTLY THE BEST
*Designing and building the finest homes
in Santa Fe for over forty years*

WOODS DESIGN BUILDERS
302 Catron Street, Santa Fe, New Mexico 87501 • 505.988.2413 • woodsbuilders.com

photography : ©Wendy McEhern | Architectural Design and Construction : Woods Design Builders and Lorn Tyrk | Interior Design : Violante & Rochford Interiors

The Cheesecake Factory

Proudly Supports NDI New Mexico
Coronado Center | 6600 Menaul Blvd NE
(505) 883-2539



We have been your party experts for over 30 years.
Cara.sales@AAeventsandtents
505-842-8368



SANTA FE KIA
1701 ST. MICHAEL'S DRIVE | SANTA FE, NM 87505
855-857-8038



BUSINESS LISTINGS

C & C DISTRIBUTORS - Chris Whitney
P.O. Box 22610 Santa Fe, NM 87502
505.474.4411 candcdistributors.com

EWING IRRIGATION & LANDSCAPE SUPPLY
8601 San Mateo Blvd NE Albuquerque, NM 87113
505.821.4441 store.ewingirrigation.com

op.cit. books
157 Paseo de Peralta Santa Fe, NM 87505
505.428.0321 opcit.com

SANTA FE FAMILY & FUNCTIONAL MEDICINE
Bruce Gollub, MD
401 Botolph Lane Santa Fe, NM 87505
505-983-8387 santafefamilymedicine.com

What THE Truck
505-795-6651 whatthetrucksantafe.com

STEP INSIDE SANTA FE PREP

Offering 24 inspiring electives in performing and visual arts

Proud supporter of NDI New Mexico



Prep means Prepared. Ready for Anything.

Learn more at sfprep.org or call to schedule a tour! 505 795 7518
Serving Grades 7-12 | Tuition Assistance Available

the **Ark**

Books . Music . Gifts . Ambiance

seriously
soulful

133 Romero Street Santa Fe, NM M-F 10-6 & Sun. 11-5
Located behind REI in the Railyard
(505)988-3709 www.arkbooks.com



Our experienced dental team is committed to your individual attention and strive to provide personalized oral health care tailored for your unique dental needs and goals.

(505) 247-8005



www.newagedentistryabq.com
200 Oak St NE, Ste 4
Albuquerque NM 87106




dentistry for kids
infants, children, teens and special patients

**Expert Dentistry
FOR ALL KIDS
in Northern New Mexico!**

- Early Dental Care
- Sedation Treatment
- Routine Care
- Special Needs
- Emergency Patients Welcome
- Comprehensive Care for Growing Kids
- Orthodontic Treatment



1st place for Kids' Dentist & Orthodontist

NOW ACCEPTING NEW PATIENTS!
505-473-5437 | SantaFeDentistryForKids.com
1439 S. St. Francis Drive | Santa Fe, NM 87505



**HARRELL HOUSE
BUG MUSEUM**

See us at the DeVargas Center
542 N. Guadalupe St, Santa Fe NM

THOUSANDS of specimens to see including
friendly live bugs you can TOUCH!

(505)695-8569

Present this Ad for \$1 Off Admission!
(good for up to 4 people)

www.HarrellHouse.com

wax's BEAUTY SALON



Full Service Salon & Now
Offering Permanent Makeup

1492 Saint Francis Drive
Santa Fe, New Mexico
505.988.2085

**Santa Fe
Audio
Visual**

Presentation
Equipment Rental and Sales
Sound Systems
Instrument Rental

**Celebrating
Our 30th Year!**

(505) 986-1796
1595 Pacheco, Suite B, Santa Fe, NM 87505
www.santafeav.com

Miguel Castillo, Owner



AAA APPROVED REPAIR & PREVENTIVE MAINTENANCE

**Tom Hitch & The Staff
at Automotive Resources
offer you a free 40 point
inspection with this ad
995-9590**




**Approved
Auto Repair**

**827 Camino de Monte Rey
www.autorepairsantafe.com**

**Learning as a Practice
Certificate Program**


*Wake up to wholeness, awareness
and interdependence through an
experiential and ethical understating of
Learning as a Practice*

Beginning in 2020 all of our Evenings
of Exploration and Foundation
Studies programs offered in Santa Fe
are tied to a "Certificate in Learning
as a Practice." Participants in these
programs can now choose to work
through our core programming on an
intentional pathway.

For more information or to join us for
an information session go to
www.aloveoflearning.org

**A Love of
Learning®**

ACADEMY FOR THE LOVE OF LEARNING®



aloveoflearning.org | 505.995.1860

▲ Engineering

▲ Spatial Data

▲ Advanced Technologies

*Proudly supporting
NDI New Mexico*

7500 Jefferson St. NE
Albuquerque, NM 87109
505.823.1000



FROM THE CENTERS FOR MEDICARE & MEDICAID SERVICES

A New Milestone for CHRISTUS St. Vincent

Trust your care to those you know.

The results are extraordinary. The care is personal.



455 ST MICHAEL'S DRIVE • SANTA FE, NM 87505 • (505) 913-3361 • WWW.STVIN.ORG

Making a difference where we work and live

Fidelity Investments is proud to sponsor

NDI New Mexico Gala

Albuquerque Investor Center
2261 Q Street NE, Suite 2A
Albuquerque, NM 87110
800.418.6291



Fidelity Brokerage Services LLC, Member NYSE, SIPC, 900 Salem Street, Smithfield, RI 02917
© 2019 FMR LLC. All rights reserved. 882689.2.31

ADVERTISING INDEX

AA Events and Tents.....	90	JenkinsGavin, Inc.....	79
Abba Technologies.....	88	Just for Grins.....	66
Academy for the		Kaune's Neighborhood Market.....	73
Love of Learning.....	93	Kellem Orthodontics.....	67
Anchorum St. Vincent.....	65	Kioti Clothing.....	86
The Ark.....	91	Klinger Constructors, LLC.....	65
Automotive Resources.....	93	La Montañita Co-op.....	76
Bohannon Huston.....	94	Lectrosonics.....	66
Bosque School.....	83	Maddox & Co. Realtors.....	67
Brace Builders.....	85	Manitou Galleries.....	72
Bumblebee's Baja Grill.....	80	Max's Beauty Salon.....	92
C & C Distributors.....	91	Meow Wolf.....	68
cafecito.....	86	Milagro Dental.....	81
The Candyman Strings & Things.....	83	Molzen-Corbin & Associates.....	68
The Cat North & South.....	71	Moss Adams, LLP.....	65
Century Bank.....	3	New Age Dentistry.....	91
The Cheesecake Factory.....	90	New Mexico Dancewear.....	66
CHRISTUS St. Vincent		NAI Maestas & Ward.....	78
Medical Center.....	95	PNM.....	77
Collector Cars of Santa Fe.....	73	Paloma.....	76
Cowgirl Santa Fe.....	82	Panda Express.....	84
Creative HomeBuyers, Inc.....	69	Paper Dosa.....	83
Del Norte Credit Union.....	88	Peyton Wright Gallery.....	74
Dentistry For Kids.....	92	Positive Energy Solar.....	74
Desert Academy.....	63	Presbyterian Healthcare	
Dion's Pizza.....	88	Services Albuquerque.....	2
Electric Playhouse.....	63	The Ranch House.....	77
Enterprise Bank & Trust		Running Hub.....	79
.....Inside Back Cover		Samuel Design Group.....	62
Ewing Irrigation & Landscape Supply.....	91	Santa Fe Animal Shelter	
ExplorAbilities, Inc.....	82	& Humane Society.....	71
Family Physicians of		Santa Fe Audio Visual.....	93
Albuquerque.....	83	Santa Fe Family and	
Fidelity Investments.....	95	Functional Medicine.....	91
First National 1870.....	9	Santa Fe Girls' School.....	81
Fix My Roof.....	87	Sant Fe Kia.....	91
Frontier Frames.....	78	Santa Fe Prep.....	90
galleryFRITZ.....	62	Santa Fe School for the	
Garcia Automotive Group.....	1	Arts and Sciences.....	86
Genoveva Chavez		Santa Fe Youth Symphony.....	64
Community Center.....	68	Second Street Brewery.....	79
The Golden Eye.....	63	Señor Murphy Candymaker.....	76
Guadalupe Credit Union.....	62	Schimmel Security.....	81
HUB International		Sotheby's International Realty.....	64
Insurance Services.....	63	Starline Printing.....	Inside Front Cover
The Harrell House Bug Museum.....	92	State Employees Credit Union.....	71
Harry's Road House.....	76	State Farm.....	77
Healthy Smiles Happy Teeth.....	85	Thornburg Investment	
Herrera Coaches.....	84	Management.....	Back Cover
Homewise.....	67	Tomasita's.....	71
Hotel Santa Fe Hacienda and Spa.....	73	Walter Burke Catering.....	85
Il Piatto.....	82	Western Dermatology.....	75
Integration Therapy.....	78	What THE Truck.....	91
J.C. Sales and Associates.....	70	Woods Design Builders.....	89



MORE THAN A DANCE CLASS.
A WAY TO ENGAGE AND MOTIVATE.

Dance helps children develop discipline, a standard of excellence, and a belief in themselves that will carry over into all aspects of their lives. Join us in supporting NDI New Mexico in their efforts to engage and motivate New Mexico's children. Together. That is how we make a difference.





ENERGY + TEAMWORK EXCELLENCE

Like Thornburg, NDI New Mexico recognizes that energy and teamwork equals excellence. We are proud to support NDI New Mexico's mission to help children develop discipline, a standard of excellence, and a belief in themselves that will carry over into all aspects of their lives.

Since 1982 and from our headquarters in Santa Fe, Thornburg Investment Management has been a recognized leader in fixed income, equity, and alternative investment solutions for institutions and financial advisors.

Learn more about us at thornburg.com

Thornburg
INVESTMENT MANAGEMENT